


# Anti-Vimentin antibody ab137321

★★★★★ **1 Abreviews**   **224 References**   画像数 **14**

### 製品の概要

製品名	Anti-Vimentin antibody
製品の詳細	Rabbit polyclonal to Vimentin
由来種	Rabbit
アプリケーション	<b>適用あり:</b> WB, ICC/IF, IHC-P, IP
種交差性	<b>交差種:</b> Mouse, Rat, Human <b>交差が予測される動物種:</b> Chicken, Guinea pig, Cow, Dog, Chimpanzee 
免疫原	Recombinant fragment within Human Vimentin (internal sequence). The exact sequence is proprietary. Database link: <b>P08670</b>
ポジティブ・コントロール	WB: HEK-293T, HeLa and NIH/3T3 whole cell lysates. U87-MG, SK-N-SH. IMR32 and SK-N-AS whole cell extracts. ICC/IF: HeLa cells. IHC-P: Adult mouse retina tissue. U373 xenograft tissue and RT2 rat xenograft tissue. IP: HeLa whole cell extract.
特記事項	<p>The Life Science industry has been in the grips of a reproducibility crisis for a number of years. Abcam is leading the way in addressing this with our range of recombinant monoclonal antibodies and knockout edited cell lines for gold-standard validation. Please check that this product meets your needs before purchasing.</p> <p>If you have any questions, special requirements or concerns, please send us an inquiry and/or contact our Support team ahead of purchase. Recommended alternatives for this product can be found below, along with publications, customer reviews and Q&amp;As</p>

### 製品の特性

製品の状態	Liquid
保存方法	Shipped at 4°C. Store at +4°C short term (1-2 weeks). Upon delivery aliquot. Store at -20°C. Avoid freeze / thaw cycle.
バッファー	pH: 7.00 Preservative: 0.025% Proclin 300 Constituents: 79% PBS, 20% Glycerol (glycerin, glycerine)
精製度	Affinity purified
ポリ/モノ	ポリクローナル
アイソタイプ	IgG

## アプリケーション

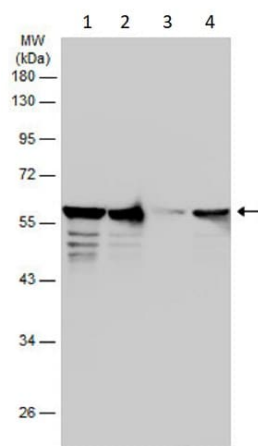
**The Abpromise guarantee**      **Abpromise保証は、次のテスト済みアプリケーションにおけるab137321の使用に適用されます**  
アプリケーションノートには、推奨の開始希釈率がありますが、適切な希釈率につきましてはご検討ください。

アプリケーション	Abreviews	特記事項
WB		1/500 - 1/3000. Predicted molecular weight: 54 kDa.
ICC/IF		1/100 - 1/1000.
IHC-P	★★★★★ (1)	1/100 - 1/1000.
IP		Use at an assay dependent concentration.

## ターゲット情報

機能	Vimentins are class-III intermediate filaments found in various non-epithelial cells, especially mesenchymal cells. Vimentin is attached to the nucleus, endoplasmic reticulum, and mitochondria, either laterally or terminally. Involved with LARP6 in the stabilization of type I collagen mRNAs for CO1A1 and CO1A2.
組織特異性	Highly expressed in fibroblasts, some expression in T- and B-lymphocytes, and little or no expression in Burkitt's lymphoma cell lines. Expressed in many hormone-independent mammary carcinoma cell lines.
関連疾患	Cataract 30
配列類似性	Belongs to the intermediate filament family.
ドメイン	The central alpha-helical coiled-coil rod region mediates elementary homodimerization. The [IL]-x-C-x-x-[DE] motif is a proposed target motif for cysteine S-nitrosylation mediated by the iNOS-S100A8/A9 transnitrosylase complex.
翻訳後修飾	Filament disassembly during mitosis is promoted by phosphorylation at Ser-55 as well as by nestin (By similarity). One of the most prominent phosphoproteins in various cells of mesenchymal origin. Phosphorylation is enhanced during cell division, at which time vimentin filaments are significantly reorganized. Phosphorylation by PKN1 inhibits the formation of filaments. Phosphorylated at Ser-56 by CDK5 during neutrophil secretion in the cytoplasm. Phosphorylated by STK33. O-glycosylated during cytokinesis at sites identical or close to phosphorylation sites, this interferes with the phosphorylation status. S-nitrosylation is induced by interferon-gamma and oxidatively-modified low-density lipoprotein (LDL(ox)) possibly implicating the iNOS-S100A8/9 transnitrosylase complex.
細胞内局在	Cytoplasm.
製品の状態	Vimentin is found in connective tissue and in the cytoskeleton.

## 画像



Western blot - Anti-Vimentin antibody (ab137321)

**All lanes :** Anti-Vimentin antibody (ab137321) at 1/50000 dilution

**Lane 1 :** U87-MG (Human glioblastoma-astrocytoma epithelial cell line) whole cell extracts

**Lane 2 :** SK-N-SH (Human neuroblastoma cell line) whole cell extracts

**Lane 3 :** IMR32 whole cell extracts

**Lane 4 :** SK-N-AS whole cell extracts

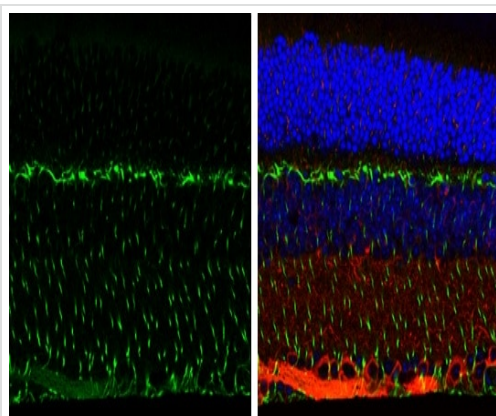
Lysates/proteins at 30 µg per lane.

## Secondary

**All lanes :** HRP-conjugated anti-rabbit IgG

**Predicted band size:** 54 kDa

10% SDS-PAGE gel

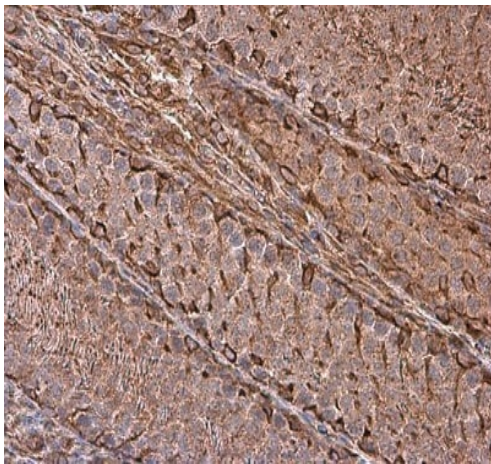


Immunohistochemistry (Formalin/PFA-fixed paraffin-embedded sections) - Anti-Vimentin antibody (ab137321)

Paraffin-embedded adult mouse retina tissue stained for Vimentin with ab137321 (1/250 dilution) (green) in immunohistochemical analysis.

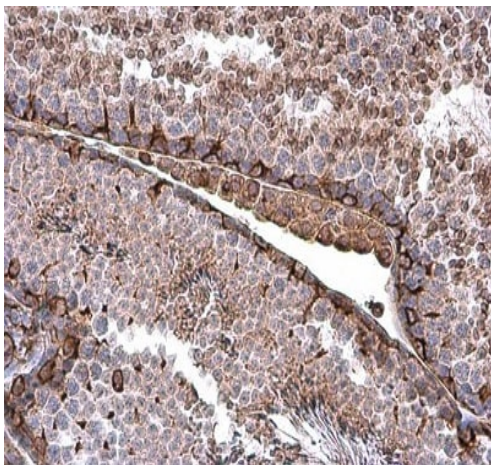
Red: beta Tubulin 3/ TUJ1, stained by beta Tubulin 3/ TUJ1 antibody [GT11710] diluted at 1:500.

Blue: Fluoroshield with DAPI.



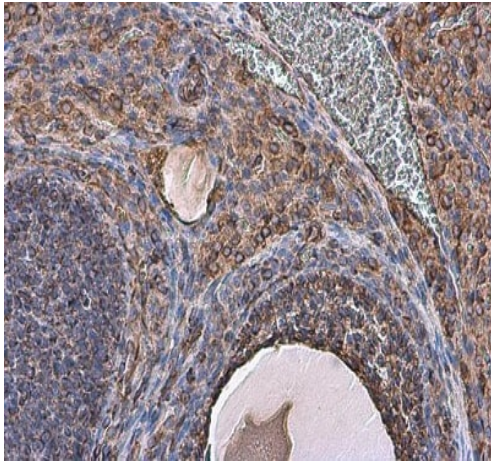
Immunohistochemistry (Formalin/PFA-fixed paraffin-embedded sections) - Anti-Vimentin antibody (ab137321)

Paraffin-embedded rat testis tissue stained for Vimentin with ab137321 at a 1/500 dilution in immunohistochemical analysis.



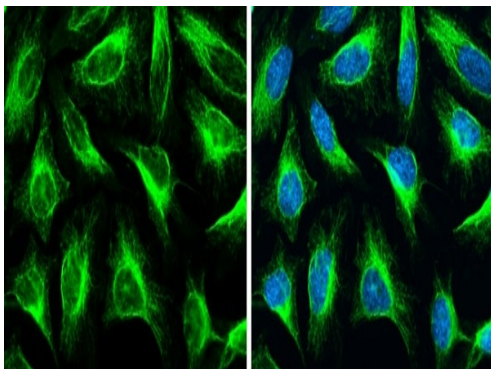
Immunohistochemistry (Formalin/PFA-fixed paraffin-embedded sections) - Anti-Vimentin antibody (ab137321)

Paraffin-embedded mouse testis tissue stained for Vimentin with ab137321 at a 1/500 dilution in immunohistochemical analysis.



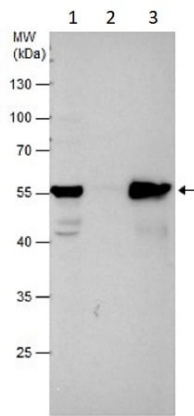
Immunohistochemistry (Formalin/PFA-fixed paraffin-embedded sections) - Anti-Vimentin antibody (ab137321)

Paraffin-embedded mouse ovary tissue stained for Vimentin with ab137321 at a 1/500 dilution in immunohistochemical analysis.



Immunocytochemistry/ Immunofluorescence - Anti-Vimentin antibody (ab137321)

HeLa (human epithelial cell line from cervix adenocarcinoma) cells stained for Vimentin (green) using ab137321 (1/500 dilution) in ICC/IF. Cells were fixed in 4% paraformaldehyde at RT for 15 minutes. Counterstain: Hoechst 33342 (blue).



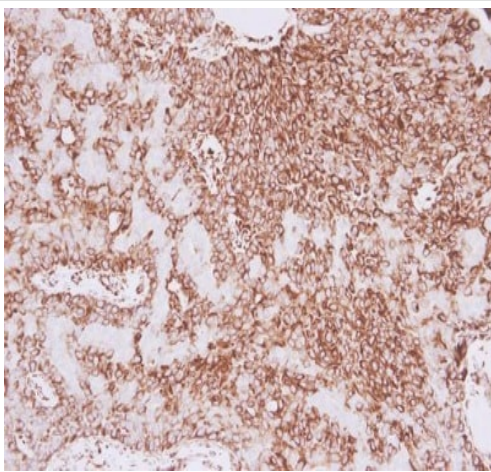
Immunoprecipitation - Anti-Vimentin antibody  
(ab137321)

Vimentin was immunoprecipitated from HeLa (Human epithelial cell line from cervix adenocarcinoma) whole cell extracts using 5 µg of ab137321.

**Lane 1:** HeLa whole cell extracts (Input).

**Lane 2:** Control IgG in HeLa whole cell extracts.

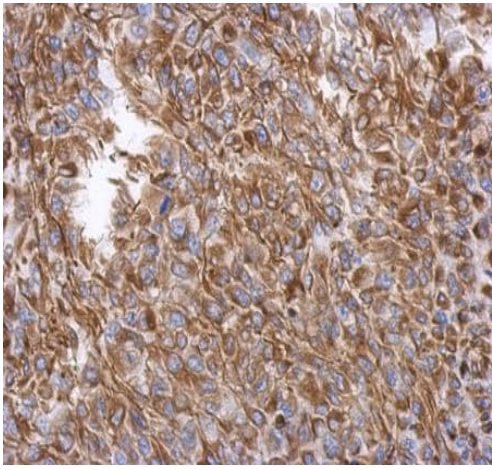
**Lane 3:** Vimentin IP in HeLa whole cell extracts.



Immunohistochemistry (Formalin/PFA-fixed paraffin-embedded sections) - Anti-Vimentin antibody  
(ab137321)

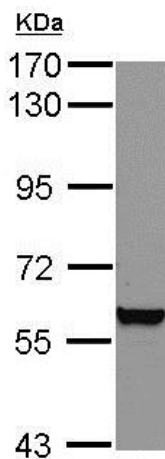
Paraffin-embedded human lung carcinoma tissue stained for Vimentin with ab137321 at a 1/500 dilution in immunohistochemical analysis.





Immunohistochemistry (Formalin/PFA-fixed paraffin-embedded sections) - Anti-Vimentin antibody (ab137321)

Immunohistochemical analysis of paraffin-embedded, formalin-fixed RT2 rat xenograft tissue labeling Vimentin, using ab137321 at a 1/500 dilution.

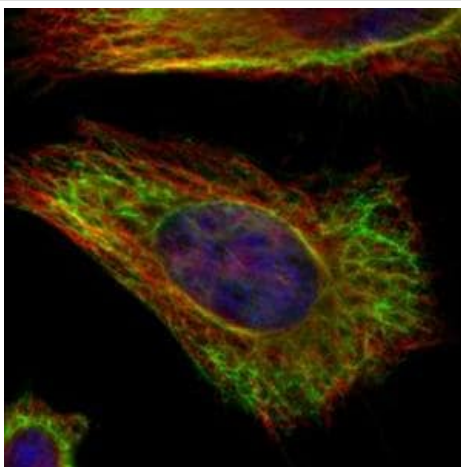


Western blot - Anti-Vimentin antibody (ab137321)

Anti-Vimentin antibody (ab137321) at 1/3000 dilution + HEK-293T (Human epithelial cell line from embryonic kidney transformed with large T antigen) whole cell lysate at 30 µg

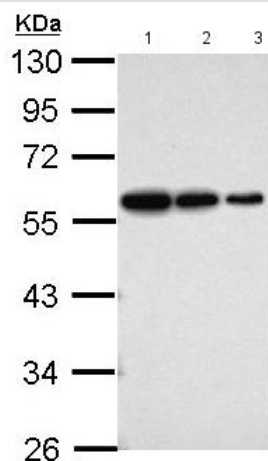
**Predicted band size:** 54 kDa

7.5% SDS PAGE



Immunocytochemistry/ Immunofluorescence - Anti-Vimentin antibody (ab137321)

Confocal immunofluorescence analysis of methanol-fixed HeLa (Human epithelial cell line from cervix adenocarcinoma) cells labeling Vimentin, using ab137321 (green) at a 1/500 dilution. Alpha-tubulin filaments were labelled with an anti-alpha tubulin antibody (red) at a 1/2000 dilution.



Western blot - Anti-Vimentin antibody (ab137321)

**All lanes :** Anti-Vimentin antibody (ab137321) at 1/3000 dilution

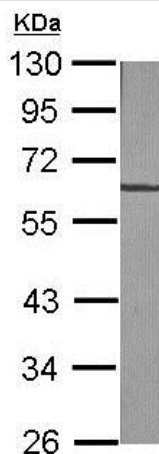
**Lane 1 :** HEK-293T (Human epithelial cell line from embryonic kidney transformed with large T antigen) whole cell lysate at 20  $\mu$ g

**Lane 2 :** HEK-293T (Human epithelial cell line from embryonic kidney transformed with large T antigen) whole cell lysate at 10  $\mu$ g

**Lane 3 :** HEK-293T (Human epithelial cell line from embryonic kidney transformed with large T antigen) whole cell lysate at 5  $\mu$ g

**Predicted band size:** 54 kDa

10% SDS PAGE

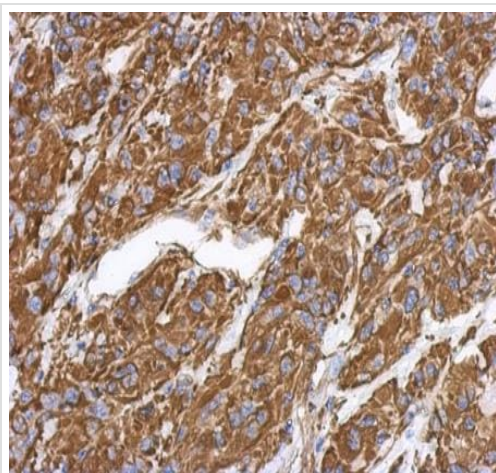


Western blot - Anti-Vimentin antibody (ab137321)

Anti-Vimentin antibody (ab137321) at 1/1000 dilution + NIH-3T3 (Mouse embryo fibroblast cell line) whole cell lysate at 30  $\mu$ g

**Predicted band size:** 54 kDa

10% SDS Page



Immunohistochemistry (Formalin/PFA-fixed paraffin-embedded sections) - Anti-Vimentin antibody (ab137321)

Immunohistochemical analysis of paraffin-embedded, formalin-fixed U373 xenograft tissue labeling Vimentin, using ab137321 at a 1/500 dilution.



**Please note:** All products are "FOR RESEARCH USE ONLY. NOT FOR USE IN DIAGNOSTIC PROCEDURES"

### **Our Abpromise to you: Quality guaranteed and expert technical support**

---

- Replacement or refund for products not performing as stated on the datasheet
- Valid for 12 months from date of delivery
- Response to your inquiry within 24 hours
  
- We provide support in Chinese, English, French, German, Japanese and Spanish
- Extensive multi-media technical resources to help you
- We investigate all quality concerns to ensure our products perform to the highest standards

If the product does not perform as described on this datasheet, we will offer a refund or replacement. For full details of the Abpromise, please visit <https://www.abcam.co.jp/abpromise> or contact our technical team.

### **Terms and conditions**

---

- Guarantee only valid for products bought direct from Abcam or one of our authorized distributors