

### Anti-VEGFC antibody ab9546

[32 References](#) [画像数 5](#)

#### 製品の概要

製品名	Anti-VEGFC antibody
製品の詳細	Rabbit polyclonal to VEGFC
由来種	Rabbit
アプリケーション	<b>適用あり:</b> IHC-P, IHC-FoFr, WB, ELISA <b>適用なし:</b> IP
種交差性	<b>交差種:</b> Mouse, Rat, Sheep, Human
免疫原	Recombinant fragment corresponding to Rat VEGFC aa 101-221. Produced from sera of rabbits pre-immunized with highly pure recombinant rat VEGF-C (Asp101-Ile221) derived from insect cells. Sequence: DTVKLAAAHYNTEILKSIDNEWKRTQCMPREVCIDVGKEFGA ATNTFFKP PCVSVYRCGGCCNSEGLQCMNTSTGYLSKTLFEITVPLSQGP KPVVISFA NHTSCRCMSKLDVYRQVHSIIHHHHHH  Database link: <a href="#">P49767</a>  <a href="#">Run BLAST with</a>  <a href="#">Run BLAST with</a>

#### 特記事項

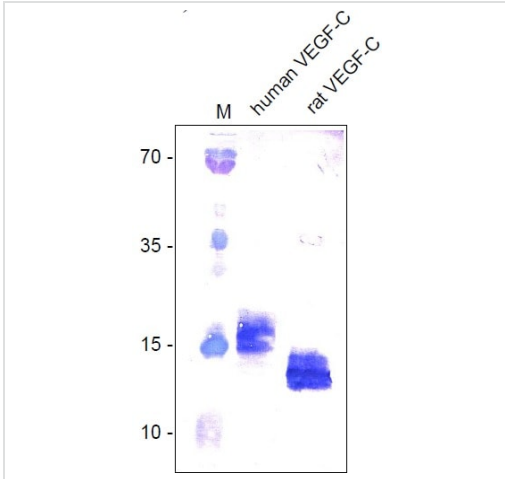
The Life Science industry has been in the grips of a reproducibility crisis for a number of years. Abcam is leading the way in addressing this with our range of recombinant monoclonal antibodies and knockout edited cell lines for gold-standard validation. Please check that this product meets your needs before purchasing.

If you have any questions, special requirements or concerns, please send us an inquiry and/or contact our Support team ahead of purchase. Recommended alternatives for this product can be found below, along with publications, customer reviews and Q&As

#### 製品の特性

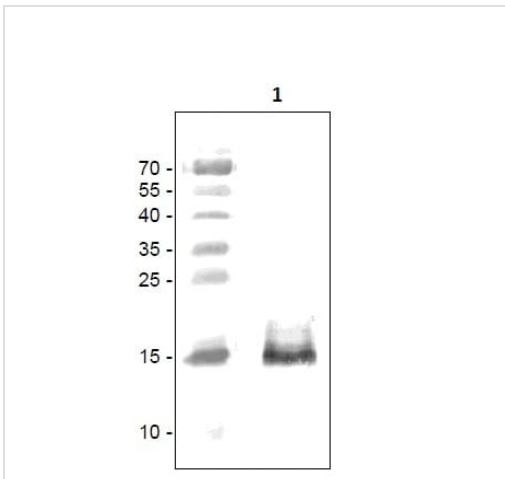
製品の状態	Liquid
保存方法	Shipped at 4°C. Store at +4°C short term (1-2 weeks). Upon delivery aliquot. Store at -20°C long term. Avoid freeze / thaw cycle.
バッファー	Constituent: PBS
精製度	Protein A purified





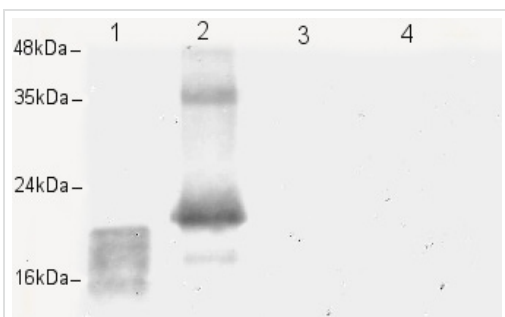
Western blot - Anti-VEGFC antibody (ab9546)

Western analysis of recombinant human and rat VEGF-C using a polyclonal rabbit anti-rat VEGF-C antibody.



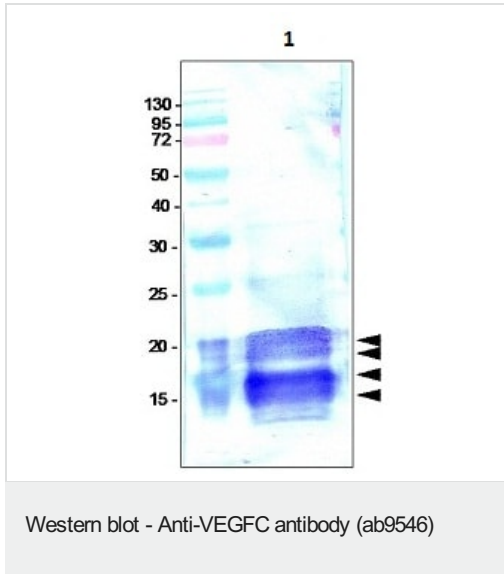
Western blot - Anti-VEGFC antibody (ab9546)

Western blot with recombinant rat VEGF C fused to His-tag using the polyclonal anti VEGF C antibody ab9546. Bands are between 15kDa and 20kDa represents glycosylation forms.



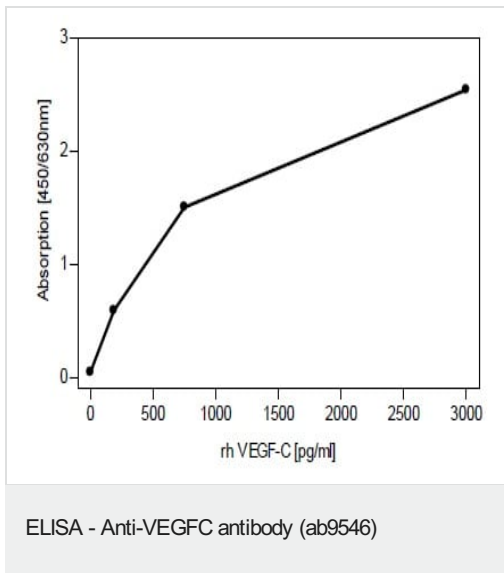
Western blot - Anti-VEGFC antibody (ab9546)

Western blot with human and rat VEGF C and VEGF D using the polyclonal anti VEGF C antibody ab9546. Proteins were separated by 15% SDS-PAGE and blotted on to PVDF membranes as described. After transfer, the membrane was incubated for 1 h with ab9546 at 1  $\mu$ g/ml in TBS containing 20% non-fat milk followed by incubation with a goat-anti-rabbit alkaline phosphatase-conjugated secondary antibody. Lane 1/250ng rat VEGF C; lane 2/250 ng human VEGF C; lane 3/250 ng rat VEGF D; lane4/250 ng human VEGF-D.



Anti-VEGFC antibody (ab9546) + Rat Recombinant VEGF-C insect cells

Western Blot was run on a 15% SDS-PAGE gel. Bands between 15kDa and 20kDa represent the different glycosylation forms.



VEGF-C sandwich-ELISA using ab9546 as capture antibody and recombinant rat VEGF-C as standard. Biotinylated rabbit anti-rat VEGF-C was used for detection.

**Please note:** All products are "FOR RESEARCH USE ONLY. NOT FOR USE IN DIAGNOSTIC PROCEDURES"

### Our Abpromise to you: Quality guaranteed and expert technical support

- Replacement or refund for products not performing as stated on the datasheet
- Valid for 12 months from date of delivery
- Response to your inquiry within 24 hours
- We provide support in Chinese, English, French, German, Japanese and Spanish
- Extensive multi-media technical resources to help you
- We investigate all quality concerns to ensure our products perform to the highest standards

If the product does not perform as described on this datasheet, we will offer a refund or replacement. For full details of the Abpromise,

please visit <https://www.abcam.co.jp/abpromise> or contact our technical team.

## Terms and conditions

---

- Guarantee only valid for products bought direct from Abcam or one of our authorized distributors