

Anti-VEGFA antibody ab39250

★★★★☆ [1 Abreviews](#) [22 References](#) [画像数 2](#)

製品の概要

製品名 Anti-VEGFA antibody
製品の詳細 Rabbit polyclonal to VEGFA
由来種 Rabbit
特異性 From Jan 2024, QC testing of replenishment batches of this polyclonal changed. All tested and expected application and reactive species combinations are still covered by our Abcam product promise. However, we no longer test all applications. For more information on a specific batch, please contact our Scientific Support who will be happy to help.

アプリケーション **適用あり:** IHC-P, ICC/IF

種交差性 **交差種:** Human

交差が予測される動物種: Mouse, Rat 

免疫原 Synthetic peptide within Human VEGFA aa 1-100 (N terminal). The exact sequence is proprietary.
Database link: [P15692](#)

ポジティブ・コントロール Tumor cells in hemangiosarcomas IF/ICC: HepG2 cell line

特記事項 **This product is FOR RESEARCH USE ONLY. For commercial use, please contact partnerships@abcam.com.**

The Life Science industry has been in the grips of a reproducibility crisis for a number of years. Abcam is leading the way in addressing this with our range of recombinant monoclonal antibodies and knockout edited cell lines for gold-standard validation. Please check that this product meets your needs before purchasing.

If you have any questions, special requirements or concerns, please send us an inquiry and/or contact our Support team ahead of purchase. Recommended alternatives for this product can be found below, along with publications, customer reviews and Q&As

製品の特性

製品の状態 Liquid

保存方法 Shipped at 4°C. Upon delivery aliquot and store at -20°C. Avoid freeze / thaw cycles.

バッファー pH: 7.60

Preservative: 0.1% Sodium azide

Constituents: PBS, 1% BSA

精製度	Immunogen affinity purified
ポリ/モノ	ポリクローナル
アイソタイプ	IgG

アプリケーション

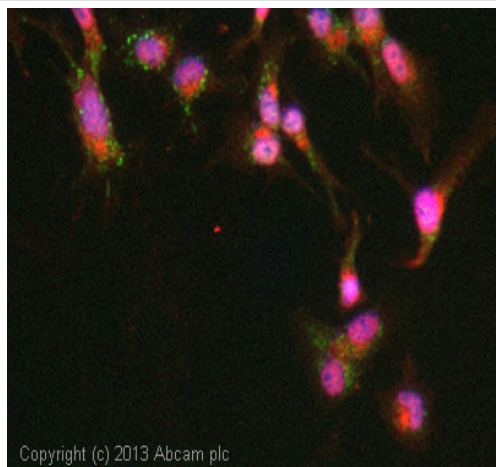
The Abpromise guarantee **Abpromise保証は、次のテスト済みアプリケーションにおけるab39250の使用に適用されず**
 アプリケーションノートには、推奨の開始希釈率がありますが、適切な希釈率につきましてはご検討ください。

アプリケーション	Abreviews	特記事項
IHC-P		1/100. Perform heat mediated antigen retrieval before commencing with IHC staining protocol.
ICC/IF		Use a concentration of 1 µg/ml.

ターゲット情報

機能	Growth factor active in angiogenesis, vasculogenesis and endothelial cell growth. Induces endothelial cell proliferation, promotes cell migration, inhibits apoptosis and induces permeabilization of blood vessels. Binds to the FLT1/VEGFR1 and KDR/VEGFR2 receptors, heparan sulfate and heparin. NRP1/Neuropilin-1 binds isoforms VEGF-165 and VEGF-145. Isoform VEGF165B binds to KDR but does not activate downstream signaling pathways, does not activate angiogenesis and inhibits tumor growth.
組織特異性	Isoform VEGF189, isoform VEGF165 and isoform VEGF121 are widely expressed. Isoform VEGF206 and isoform VEGF145 are not widely expressed.
関連疾患	Defects in VEGFA are a cause of susceptibility to microvascular complications of diabetes type 1 (MVCD1) [MIM:603933]. These are pathological conditions that develop in numerous tissues and organs as a consequence of diabetes mellitus. They include diabetic retinopathy, diabetic nephropathy leading to end-stage renal disease, and diabetic neuropathy. Diabetic retinopathy remains the major cause of new-onset blindness among diabetic adults. It is characterized by vascular permeability and increased tissue ischemia and angiogenesis.
配列類似性	Belongs to the PDGF/VEGF growth factor family.
細胞内局在	Secreted. VEGF121 is acidic and freely secreted. VEGF165 is more basic, has heparin-binding properties and, although a significant proportion remains cell-associated, most is freely secreted. VEGF189 is very basic, it is cell-associated after secretion and is bound avidly by heparin and the extracellular matrix, although it may be released as a soluble form by heparin, heparinase or plasmin.

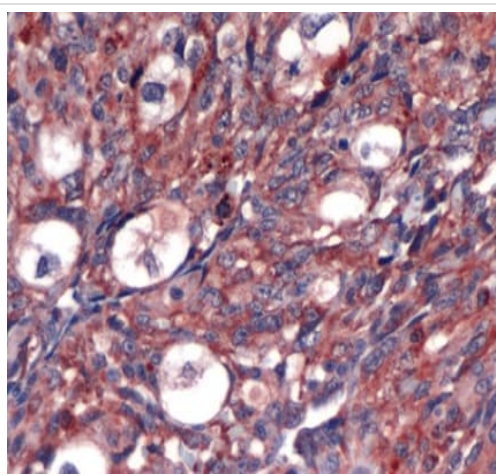
画像



Copyright (c) 2013 Abcam plc

Immunocytochemistry/ Immunofluorescence - Anti-VEGFA antibody (ab39250)

ICC/IF image of ab39250 stained HepG2 cells. The cells were 4% formaldehyde fixed (10 min) and then incubated in 1%BSA / 10% normal goat serum / 0.3M glycine in 0.1% PBS-Tween for 1h to permeabilise the cells and block non-specific protein-protein interactions. The cells were then incubated with the antibody (ab39250, 1µg/ml) overnight at +4°C. The secondary antibody (green) was **ab96899**, DyLight® 488 goat anti-rabbit IgG (H+L) used at a 1/250 dilution for 1h. Alexa Fluor® 594 WGA was used to label plasma membranes (red) at a 1/200 dilution for 1h. DAPI was used to stain the cell nuclei (blue) at a concentration of 1.43µM.



Immunohistochemistry (Formalin/PFA-fixed paraffin-embedded sections) - Anti-VEGFA antibody (ab39250)

Immunohistochemistry (Formalin/PFA-fixed paraffin-embedded sections) of human angiosarcoma stained with ab39250 at 1/100.

Please note: All products are "FOR RESEARCH USE ONLY. NOT FOR USE IN DIAGNOSTIC PROCEDURES"

Our Abpromise to you: Quality guaranteed and expert technical support

- Replacement or refund for products not performing as stated on the datasheet
- Valid for 12 months from date of delivery
- Response to your inquiry within 24 hours
- We provide support in Chinese, English, French, German, Japanese and Spanish
- Extensive multi-media technical resources to help you

- We investigate all quality concerns to ensure our products perform to the highest standards

If the product does not perform as described on this datasheet, we will offer a refund or replacement. For full details of the Abpromise, please visit <https://www.abcam.co.jp/abpromise> or contact our technical team.

Terms and conditions

- Guarantee only valid for products bought direct from Abcam or one of our authorized distributors