

# Anti-VEGF Receptor 2 antibody [EPRER16Y] ab134191

リコンビナント **RabMAb**

**21 References**    **画像数 3**

### 製品の概要

製品名	Anti-VEGF Receptor 2 antibody [EPRER16Y]
製品の詳細	Rabbit monoclonal [EPRER16Y] to VEGF Receptor 2
由来種	Rabbit
特異性	It is predicted that this antibody does not cross react with other members of the VEGF receptor family.
アプリケーション	<b>適用あり:</b> ELISA, WB, IP <b>適用なし:</b> Flow Cyt, ICC/IF or IHC-P
種交差性	<b>交差種:</b> Human
免疫原	Recombinant fragment within Human VEGF Receptor 2 aa 1-800. The exact sequence is proprietary.
ポジティブ・コントロール	WB: Human placenta lysate.
特記事項	<p>This product is a recombinant monoclonal antibody, which offers several advantages including:</p> <ul style="list-style-type: none"> <li>- High batch-to-batch consistency and reproducibility</li> <li>- Improved sensitivity and specificity</li> <li>- Long-term security of supply</li> <li>- Animal-free production</li> </ul> <p>For more information <a href="#">see here</a>.</p> <p>Our RabMAb<sup>®</sup> technology is a patented hybridoma-based technology for making rabbit monoclonal antibodies. For details on our patents, please refer to <a href="#">RabMAb<sup>®</sup> patents</a>.</p> <p>Mouse, Rat: We have preliminary internal testing data to indicate this antibody may not react with these species. Please contact us for more information.</p>

### 製品の特性

製品の状態	Liquid
保存方法	Shipped at 4°C. Store at +4°C short term (1-2 weeks). Upon delivery aliquot. Store at -20°C. Stable for 12 months at -20°C.
バッファー	<p>pH: 7.2</p> <p>Preservative: 0.01% Sodium azide</p> <p>Constituents: 9% PBS, 40% Glycerol (glycerin, glycerine), 0.05% BSA, 50% Tissue culture</p>

## アプリケーション

アプリケーション	Abreviews	特記事項
ELISA		Use at an assay dependent concentration.
WB		1/1000 - 1/10000. Detects a band of approximately 210, 230 kDa (predicted molecular weight: 151 kDa).
IP		1/20.

## ターゲット情報

**関連疾患**

Defects in KDR are associated with susceptibility to hemangioma capillary infantile (HCI) [MIM:602089]. HCI are benign, highly proliferative lesions involving aberrant localized growth of capillary endothelium. They are the most common tumor of infancy, occurring in up to 10% of all births. Hemangiomas tend to appear shortly after birth and show rapid neonatal growth for up to 12 months characterized by endothelial hypercellularity and increased numbers of mast cells. This phase is followed by slow involution at a rate of about 10% per year and replacement by fibrofatty stroma.

細胞内局在 Membrane.



Western blot - Anti-VEGF Receptor 2 antibody  
[EPRER16Y] (ab134191)

Anti-VEGF Receptor 2 antibody [EPRER16Y] (ab134191) at 1/500 dilution + Human placenta lysate at 10 µg

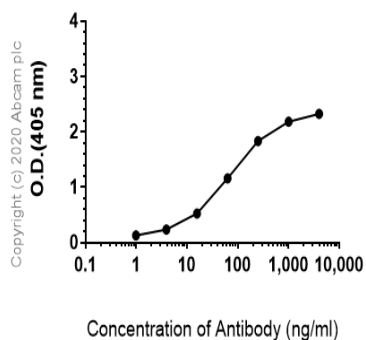
### Secondary

HRP labelled goat anti-rabbit at 1/2000 dilution

**Predicted band size:** 151 kDa

**Observed band size:** 210,230 kDa

### Indirect ELISA antibody dose-response curve antigen at 1000 ng/ml



ELISA - Anti-VEGF Receptor 2 antibody  
[EPRER16Y] (ab134191)

ELISA analysis of Hu VEGFR2 recombinant protein at 1000 ng/mL with ab134191. An Alkaline Phosphatase-conjugated AffiniPure Goat Anti-Rabbit IgG (H+L) at 1/2500 dilution was used as the secondary antibody.

### Why choose a recombinant antibody?



**Research with confidence**  
Consistent and reproducible results



**Long-term and scalable supply**  
Recombinant technology



**Success from the first experiment**  
Confirmed specificity



**Ethical standards compliant**  
Animal-free production

Anti-VEGF Receptor 2 antibody [EPRER16Y]  
(ab134191)

**Please note:** All products are "FOR RESEARCH USE ONLY. NOT FOR USE IN DIAGNOSTIC PROCEDURES"

### **Our Abpromise to you: Quality guaranteed and expert technical support**

---

- Replacement or refund for products not performing as stated on the datasheet
- Valid for 12 months from date of delivery
- Response to your inquiry within 24 hours
  
- We provide support in Chinese, English, French, German, Japanese and Spanish
- Extensive multi-media technical resources to help you
- We investigate all quality concerns to ensure our products perform to the highest standards

If the product does not perform as described on this datasheet, we will offer a refund or replacement. For full details of the Abpromise, please visit <https://www.abcam.co.jp/abpromise> or contact our technical team.

### **Terms and conditions**

---

- Guarantee only valid for products bought direct from Abcam or one of our authorized distributors