

Anti-VEGF Receptor 2 antibody [EPR21884-290] ab221679

リコンビナント RabMAb

4 References [画像数 2](#)

製品の概要

製品名	Anti-VEGF Receptor 2 antibody [EPR21884-290]
製品の詳細	Rabbit monoclonal [EPR21884-290] to VEGF Receptor 2
由来種	Rabbit
アプリケーション	適用あり: WB
種交差性	交差種: Mouse, Rat
免疫原	Recombinant fragment. This information is proprietary to Abcam and/or its suppliers.
ポジティブ・コントロール	WB: Mouse and rat placenta and lung lysates; bEnd.3 whole cell lysate.
特記事項	<p>This product is a recombinant monoclonal antibody, which offers several advantages including:</p> <ul style="list-style-type: none">- High batch-to-batch consistency and reproducibility- Improved sensitivity and specificity- Long-term security of supply- Animal-free production <p>For more information see here.</p> <p>Our RabMAb[®] technology is a patented hybridoma-based technology for making rabbit monoclonal antibodies. For details on our patents, please refer to RabMAb[®] patents.</p>

製品の特性

製品の状態	Liquid
保存方法	Shipped at 4°C. Store at +4°C short term (1-2 weeks). Upon delivery aliquot. Store at -20°C long term. Avoid freeze / thaw cycle.
バッファー	pH: 7.2 Preservative: 0.01% Sodium azide Constituents: PBS, 40% Glycerol (glycerin, glycerine), 0.05% BSA
精製度	Protein A purified
ポリ/モノ	モノクローナル
クローン名	EPR21884-290
アイソタイプ	IgG

アプリケーション

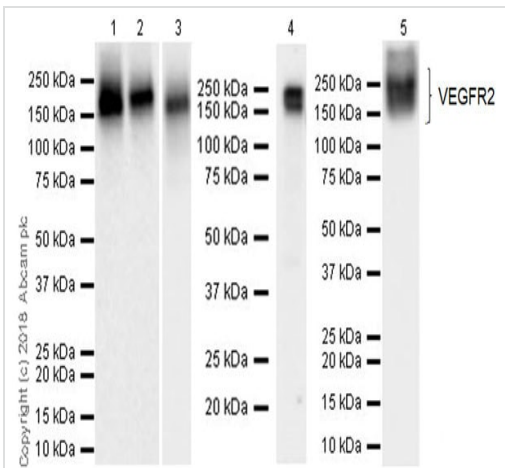
The Abpromise guarantee **Abpromise保証は、次のテスト済みアプリケーションにおけるab221679の使用に適用されず**
アプリケーションノートには、推奨の開始希釈率がありますが、適切な希釈率につきましてはご検討ください。

アプリケーション	Abreviews	特記事項
WB		1/1000. Detects a band of approximately 180-230 kDa (predicted molecular weight: 152 kDa).

ターゲット情報

機能	Receptor for VEGF or VEGFC. Has a tyrosine-protein kinase activity. The VEGF-kinase ligand/receptor signaling system plays a key role in vascular development and regulation of vascular permeability. In case of HIV-1 infection, the interaction with extracellular viral Tat protein seems to enhance angiogenesis in Kaposi's sarcoma lesions.
関連疾患	Defects in KDR are associated with susceptibility to hemangioma capillary infantile (HCI) [MIM:602089]. HCI are benign, highly proliferative lesions involving aberrant localized growth of capillary endothelium. They are the most common tumor of infancy, occurring in up to 10% of all births. Hemangiomas tend to appear shortly after birth and show rapid neonatal growth for up to 12 months characterized by endothelial hypercellularity and increased numbers of mast cells. This phase is followed by slow involution at a rate of about 10% per year and replacement by fibrofatty stroma.
配列類似性	Belongs to the protein kinase superfamily. Tyr protein kinase family. CSF-1/PDGF receptor subfamily. Contains 7 Ig-like C2-type (immunoglobulin-like) domains. Contains 1 protein kinase domain.
翻訳後修飾	Phosphorylated. Dephosphorylated by PTPRB. Dephosphorylated by PTPRJ at Tyr-951, Tyr-996, Tyr-1054, Tyr-1059, Tyr-1175 and Tyr-1214.
細胞内局在	Membrane.

画像



Western blot - Anti-VEGF Receptor 2 antibody [EPR21884-290] (ab221679)

All lanes : Anti-VEGF Receptor 2 antibody [EPR21884-290] (ab221679) at 1/1000 dilution

Lane 1 : Mouse placenta lysate at 20 µg

Lane 2 : Rat placenta lysate at 20 µg

Lane 3 : Rat lung lysate at 20 µg

Lane 4 : Mouse lung lysate at 20 µg

Lane 5 : bEnd.3 (mouse brain endothelioma cell line) whole cell lysate at 10 µg

Secondary

Lanes 1-4 : Goat Anti-Rabbit IgG H&L (HRP) ([ab97051](#)) at 1/20000 dilution

Lane 5 : VeriBlot for IP Detection Reagent (HRP) ([ab131366](#)) at 1/1000 dilution

Developed using the ECL technique.

Predicted band size: 152 kDa

Observed band size: 180-230 kDa

Exposure time : Lanes 1-2: 3 minutes; Lane 3: 37 seconds; Lane 4: 59 seconds; Lane 5: 15 seconds

The molecular mass observed is consistent with the literature (PMID: 23354168 ; PMID: 20606037).

Why choose a recombinant antibody?

 <p>Research with confidence Consistent and reproducible results</p>	 <p>Long-term and scalable supply Recombinant technology</p>
 <p>Success from the first experiment Confirmed specificity</p>	 <p>Ethical standards compliant Animal-free production</p>

Anti-VEGF Receptor 2 antibody [EPR21884-290] (ab221679)

Our Abpromise to you: Quality guaranteed and expert technical support

- Replacement or refund for products not performing as stated on the datasheet
- Valid for 12 months from date of delivery
- Response to your inquiry within 24 hours

- We provide support in Chinese, English, French, German, Japanese and Spanish
- Extensive multi-media technical resources to help you
- We investigate all quality concerns to ensure our products perform to the highest standards

If the product does not perform as described on this datasheet, we will offer a refund or replacement. For full details of the Abpromise, please visit <https://www.abcam.co.jp/abpromise> or contact our technical team.

Terms and conditions

- Guarantee only valid for products bought direct from Abcam or one of our authorized distributors