

### Anti-VEGF Receptor 2 antibody ab2349

★★★★★ [16 Abreviews](#) [128 References](#) [画像数 4](#)

#### 製品の概要

製品名	Anti-VEGF Receptor 2 antibody
製品の詳細	Rabbit polyclonal to VEGF Receptor 2
由来種	Rabbit
アプリケーション	<b>適用あり:</b> IHC-Fr, IHC-P, ICC/IF, Flow Cyt, IP
種交差性	<b>交差種:</b> Mouse, Rat, Cow, Dog, Human
免疫原	Synthetic peptide corresponding to Mouse VEGF Receptor 2 (C terminal).
ポジティブ・コントロール	IHC-P: Human normal breast and angiosarcoma tissues; Mouse skin tissue.
特記事項	<p>Isoform 1 localization: Cell membrane; Single-pass type I membrane protein. Cytoplasm. Nucleus. Cytoplasmic vesicle. Early endosome.</p> <p>Note: Detected on caveolae-enriched lipid rafts at the cell surface. Is recycled from the plasma membrane to endosomes and back again. Phosphorylation triggered by VEGFA binding promotes internalization and subsequent degradation. VEGFA binding triggers internalization and translocation to the nucleus.</p> <p>The Life Science industry has been in the grips of a reproducibility crisis for a number of years. Abcam is leading the way in addressing this with our range of recombinant monoclonal antibodies and knockout edited cell lines for gold-standard validation. Please check that this product meets your needs before purchasing.</p> <p>If you have any questions, special requirements or concerns, please send us an inquiry and/or contact our Support team ahead of purchase. Recommended alternatives for this product can be found below, along with publications, customer reviews and Q&amp;As</p>

#### 製品の特性

製品の状態	Liquid
保存方法	Shipped at 4°C. Store at +4°C short term (1-2 weeks). Store at -20°C or -80°C. Avoid freeze / thaw cycle.
バッファー	<p>pH: 7.3</p> <p>Preservative: 0.05% Sodium azide</p> <p>Constituent: 1% BSA</p>
精製度	Protein A purified
ポリ/モノ	ポリクローナル

## アプリケーション

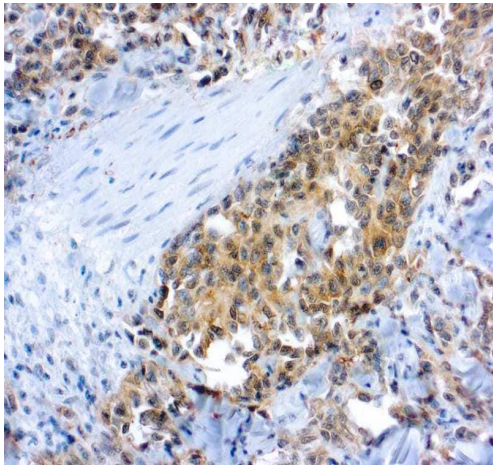
**The Abpromise guarantee**      **Abpromise保証は、次のテスト済みアプリケーションにおけるab2349の使用に適用されます**  
 アプリケーションノートには、推奨の開始希釈率がありますが、適切な希釈率につきましてはご検討ください。

アプリケーション	Abreviews	特記事項
IHC-Fr		Use at an assay dependent concentration.
IHC-P	★★★★★ (7)	1/50 - 1/100. Perform heat mediated antigen retrieval with citrate buffer pH 6 before commencing with IHC staining protocol.
ICC/IF	★★★★★ (8)	Use at an assay dependent concentration. See Abreview.
Flow Cyt		Use at an assay dependent concentration. PubMed: 18602918 <b>ab171870</b> - Rabbit polyclonal IgG, is suitable for use as an isotype control with this antibody.
IP		Use at an assay dependent concentration.

## ターゲット情報

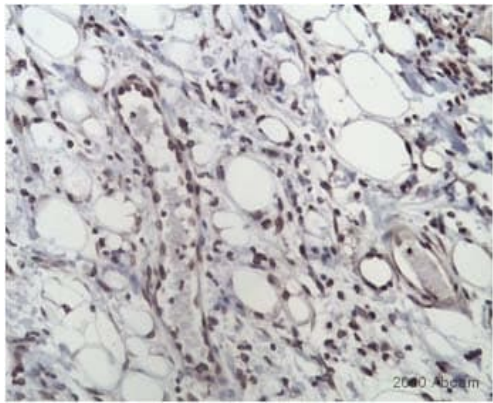
機能	Receptor for VEGF or VEGFC. Has a tyrosine-protein kinase activity. The VEGF-kinase ligand/receptor signaling system plays a key role in vascular development and regulation of vascular permeability. In case of HIV-1 infection, the interaction with extracellular viral Tat protein seems to enhance angiogenesis in Kaposi's sarcoma lesions.
関連疾患	Defects in KDR are associated with susceptibility to hemangioma capillary infantile (HCI) [MIM:602089]. HCI are benign, highly proliferative lesions involving aberrant localized growth of capillary endothelium. They are the most common tumor of infancy, occurring in up to 10% of all births. Hemangiomas tend to appear shortly after birth and show rapid neonatal growth for up to 12 months characterized by endothelial hypercellularity and increased numbers of mast cells. This phase is followed by slow involution at a rate of about 10% per year and replacement by fibrofatty stroma.
配列類似性	Belongs to the protein kinase superfamily. Tyr protein kinase family. CSF-1/PDGF receptor subfamily. Contains 7 Ig-like C2-type (immunoglobulin-like) domains. Contains 1 protein kinase domain.
翻訳後修飾	Phosphorylated. Dephosphorylated by PTPRB. Dephosphorylated by PTPRJ at Tyr-951, Tyr-996, Tyr-1054, Tyr-1059, Tyr-1175 and Tyr-1214.
細胞内局在	Membrane.

## 画像



Immunohistochemistry (Formalin/PFA-fixed paraffin-embedded sections) - Anti-VEGF Receptor 2 antibody (ab2349)

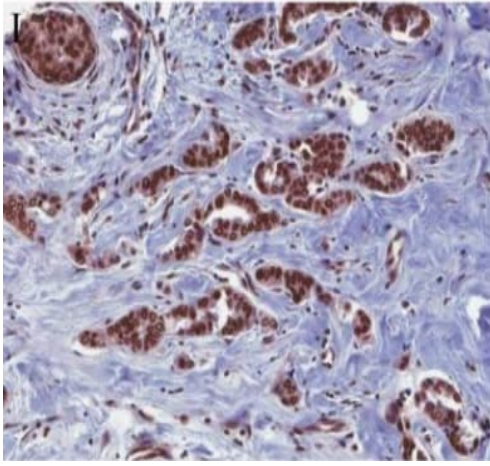
Formalin fixed, paraffin-embedded human angiosarcoma tissue stained for VEGF Receptor 2 using ab2349 at 1/50 dilution in immunohistochemical analysis.



Immunohistochemistry (Formalin/PFA-fixed paraffin-embedded sections) - Anti-VEGF Receptor 2 antibody (ab2349)

This image is courtesy of an Abreview submitted by Manoj Kumar Valluru

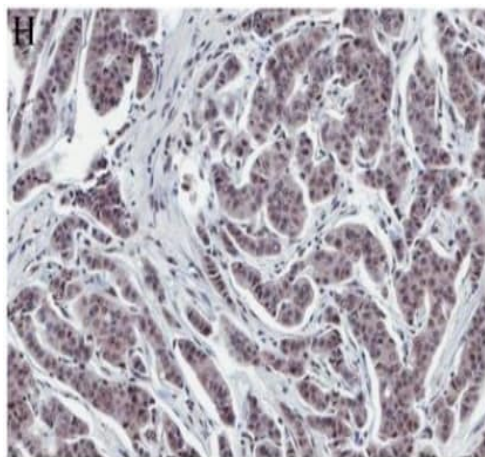
ab2349 staining the VEGF Receptor 2 in Mouse skin tissue sections by Immunohistochemistry (IHC-P - formaldehyde-fixed, paraffin-embedded sections). Tissue was fixed with formaldehyde and blocked with 10% serum for 1 hour at room temperature; antigen retrieval was by heat mediation in citrate buffer (pH 6). Samples were incubated with primary antibody (1/100 in PBS + 2% blocking serum) for 16 hours at 4°C. A biotin-conjugated Goat anti-rabbit IgG polyclonal (1/250) was used as the secondary antibody.



Immunohistochemistry (Formalin/PFA-fixed paraffin-embedded sections) - Anti-VEGF Receptor 2 antibody (ab2349)

Image from Arias-Pulido, Hugo et al., BMC Cancer 12 (2012): 298. PMC. Web. 25 Jan. 2017. doi: 10.1186/1471-2407-12-298. Fig 1I. Reproduced under the Creative Commons license <http://creativecommons.org/licenses/by/2.0/>.

Immunohistochemistry (Formalin/PFA-fixed paraffin-embedded sections) analysis of human normal breast tissue labeling VEGF Receptor 2 with ab2349 at 1/200 dilution. Sections were lightly counterstained with hematoxylin.



Immunohistochemistry (Formalin/PFA-fixed paraffin-embedded sections) - Anti-VEGF Receptor 2 antibody (ab2349)

Image from Arias-Pulido, Hugo et al., BMC Cancer 12 (2012): 298. PMC. Web. 25 Jan. 2017. doi: 10.1186/1471-2407-12-298. Fig 1H. Reproduced under the Creative Commons license [http://creativecommons.org/licenses/by/2.0](http://creativecommons.org/licenses/by/2.0/)

Immunohistochemistry (Formalin/PFA-fixed paraffin-embedded sections) analysis of human normal breast tissue labeling VEGF Receptor 2 with ab2349 at 1/200 dilution. Sections were lightly counterstained with hematoxylin.

**Please note:** All products are "FOR RESEARCH USE ONLY. NOT FOR USE IN DIAGNOSTIC PROCEDURES"

### Our Abpromise to you: Quality guaranteed and expert technical support

- Replacement or refund for products not performing as stated on the datasheet
- Valid for 12 months from date of delivery
- Response to your inquiry within 24 hours

- We provide support in Chinese, English, French, German, Japanese and Spanish
- Extensive multi-media technical resources to help you
- We investigate all quality concerns to ensure our products perform to the highest standards

If the product does not perform as described on this datasheet, we will offer a refund or replacement. For full details of the Abpromise, please visit <https://www.abcam.co.jp/abpromise> or contact our technical team.

#### **Terms and conditions**

---

- Guarantee only valid for products bought direct from Abcam or one of our authorized distributors