

Anti-VEGF Receptor 2 antibody ab11939

★★★★★ [3 Abreviews](#) [53 References](#) [画像数 6](#)

製品の概要

製品名	Anti-VEGF Receptor 2 antibody
製品の詳細	Rabbit polyclonal to VEGF Receptor 2
由来種	Rabbit
特異性	The polyclonal antibody will detect native and recombinant human VEGFR2/KDR in ELISA experiments and on the surface or solubilized from different human cell types.
アプリケーション	適用あり: Sandwich ELISA, IP, ELISA, Neutralising, WB, Flow Cyt, IHC-Fr
種交差性	交差種: Mouse, Rat, Human, Recombinant fragment
免疫原	Recombinant fragment corresponding to Human VEGF Receptor 2. Highly pure recombinant human soluble extracellular domain of KDR (110 kDa) (D1-D7).
ポジティブ・コントロール	IHC: Human spleen Flow Cyt: HUVEC (Human umbilical vein endothelial cell line) whole cell lysate and HDLEC (Human dermal lymphatic endothelial cell line) whole cell lysate
特記事項	<p>The Life Science industry has been in the grips of a reproducibility crisis for a number of years. Abcam is leading the way in addressing this with our range of recombinant monoclonal antibodies and knockout edited cell lines for gold-standard validation. Please check that this product meets your needs before purchasing.</p> <p>If you have any questions, special requirements or concerns, please send us an inquiry and/or contact our Support team ahead of purchase. Recommended alternatives for this product can be found below, along with publications, customer reviews and Q&As</p>

製品の特性

製品の状態	Liquid
保存方法	Shipped at 4°C. Store at +4°C short term (1-2 weeks). Upon delivery aliquot. Store at -20°C or -80°C. Avoid freeze / thaw cycle.
バッファー	Constituent: PBS
精製度	Protein A purified
特記事項(精製)	This antibody is affinity purified from rabbit sera.
ポリ/モノ	ポリクローナル
アイソタイプ	IgG

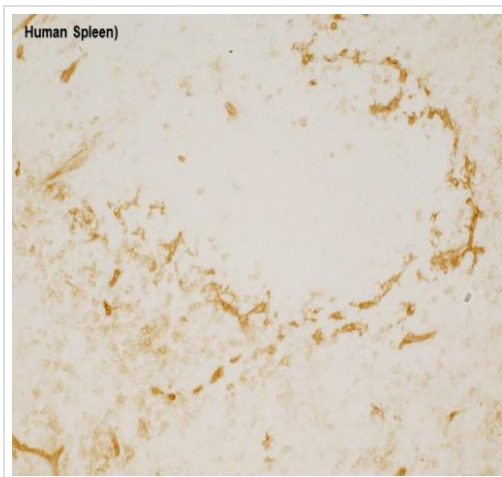
アプリケーション

The Abpromise guarantee **Abpromise保証は、次のテスト済みアプリケーションにおけるab11939の使用に適用されます**
 アプリケーションノートには、推奨の開始希釈率がありますが、適切な希釈率につきましてはご検討ください。

アプリケーション	Abreviews	特記事項
Sandwich ELISA		Use a concentration of 0.5 µg/ml. Can be paired for Sandwich ELISA with Mouse monoclonal [mV1001.3m-h] to VEGF Receptor 2 (ab42228) . For sandwich ELISA, use this antibody as Detection at 0.5µg/ml with ab42228 as Capture.
IP		Use at an assay dependent concentration.
ELISA		Use at an assay dependent concentration.
Neutralising		Use at an assay dependent concentration. PubMed: 17991870
WB	★★★★★ (1)	Use a concentration of 1 - 5 µg/ml. Predicted molecular weight: 151 kDa.
Flow Cyt		Use a concentration of 1 - 5 µg/ml. ab171870 - Rabbit polyclonal IgG, is suitable for use as an isotype control with this antibody.
IHC-Fr		Use at an assay dependent concentration.

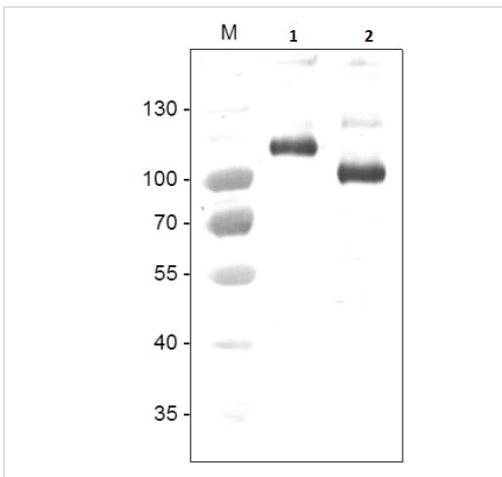
ターゲット情報

機能	Receptor for VEGF or VEGFC. Has a tyrosine-protein kinase activity. The VEGF-kinase ligand/receptor signaling system plays a key role in vascular development and regulation of vascular permeability. In case of HIV-1 infection, the interaction with extracellular viral Tat protein seems to enhance angiogenesis in Kaposi's sarcoma lesions.
関連疾患	Defects in KDR are associated with susceptibility to hemangioma capillary infantile (HCI) [MIM:602089]. HCI are benign, highly proliferative lesions involving aberrant localized growth of capillary endothelium. They are the most common tumor of infancy, occurring in up to 10% of all births. Hemangiomas tend to appear shortly after birth and show rapid neonatal growth for up to 12 months characterized by endothelial hypercellularity and increased numbers of mast cells. This phase is followed by slow involution at a rate of about 10% per year and replacement by fibrofatty stroma.
配列類似性	Belongs to the protein kinase superfamily. Tyr protein kinase family. CSF-1/PDGF receptor subfamily. Contains 7 Ig-like C2-type (immunoglobulin-like) domains. Contains 1 protein kinase domain.
翻訳後修飾	Phosphorylated. Dephosphorylated by PTPRB. Dephosphorylated by PTPRJ at Tyr-951, Tyr-996, Tyr-1054, Tyr-1059, Tyr-1175 and Tyr-1214.
細胞内局在	Membrane.



Immunohistochemistry (Frozen sections) - Anti-VEGF Receptor 2 antibody (ab11939)

Immunohistochemistry (Frozen sections) analysis of human spleen tissue sections labelling VEGF Receptor 2 with ab11939.



Western blot - Anti-VEGF Receptor 2 antibody (ab11939)

All lanes : Anti-VEGF Receptor 2 antibody (ab11939)

Lane 1 : recombinant human soluble VEGFR-2

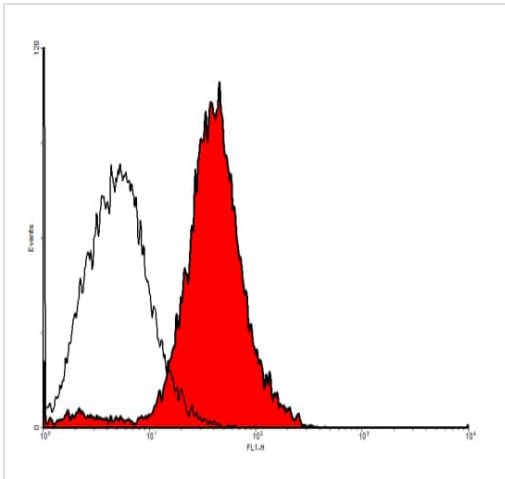
Lane 2 : recombinant native VEGFR-2

Secondary

All lanes : anti-rabbit AP-conjugated antibody

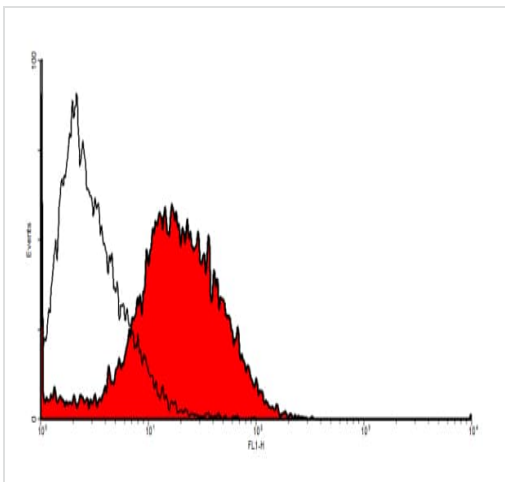
Predicted band size: 151 kDa

Samples were loaded in 10% SDS-PAGE under reducing conditions.



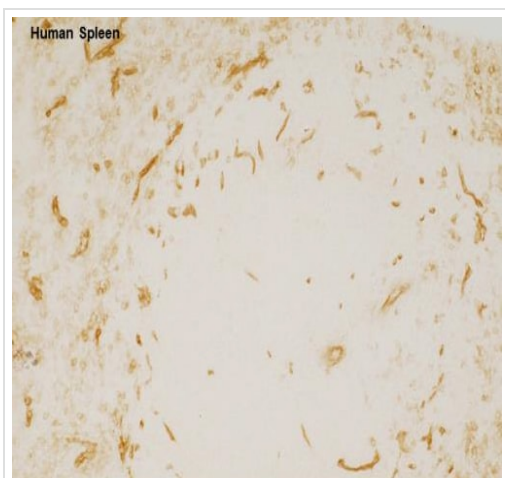
Flow Cytometry analysis of primary human dermal lymphatic endothelial cells (HDLEC) labelling VEGF Receptor 2 with ab11939.

Flow Cytometry - Anti-VEGF Receptor 2 antibody (ab11939)



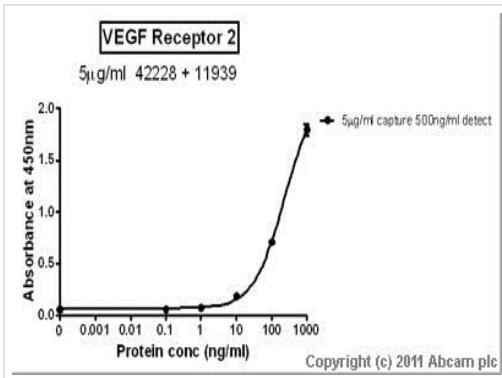
Flow Cytometry analysis of primary human umbilical vein endothelial cells (HUVEC) labelling VEGF Receptor 2 with ab11939.

Flow Cytometry - Anti-VEGF Receptor 2 antibody (ab11939)



Immunohistochemistry (Frozen sections) analysis of human spleen tissue sections labelling VEGF Receptor 2 with ab11939.

Immunohistochemistry (Frozen sections) - Anti-VEGF Receptor 2 antibody (ab11939)



Standard curve for VEGF Receptor 2 (Analyte: **ab54347**); dilution range 1pg/ml to 1µg/ml using Capture Antibody Mouse monoclonal [mV1001.3m-h] to VEGF Receptor 2 (**ab42228**) at 5µg/ml and Detector Antibody Rabbit polyclonal to VEGF Receptor 2 (**ab11939**) at 0.5µg/ml.

Sandwich ELISA - Anti-VEGF Receptor 2 antibody (ab11939)

Please note: All products are "FOR RESEARCH USE ONLY. NOT FOR USE IN DIAGNOSTIC PROCEDURES"

Our Abpromise to you: Quality guaranteed and expert technical support

- Replacement or refund for products not performing as stated on the datasheet
- Valid for 12 months from date of delivery
- Response to your inquiry within 24 hours
- We provide support in Chinese, English, French, German, Japanese and Spanish
- Extensive multi-media technical resources to help you
- We investigate all quality concerns to ensure our products perform to the highest standards

If the product does not perform as described on this datasheet, we will offer a refund or replacement. For full details of the Abpromise, please visit <https://www.abcam.co.jp/abpromise> or contact our technical team.

Terms and conditions

- Guarantee only valid for products bought direct from Abcam or one of our authorized distributors