

Anti-VE Cadherin (phospho Y685) antibody ab119785

★★★★★ **2 Abreviews** **26 References** 画像数 1

製品の概要

製品名	Anti-VE Cadherin (phospho Y685) antibody
製品の詳細	Rabbit polyclonal to VE Cadherin (phospho Y685)
由来種	Rabbit
特異性	ab119785 detects a 140 kDa band corresponding to VE cadherin in western blots of Human endothelial cells treated with pervanadate, and this band is not detected in untreated cells or after alkaline phosphatase treatment.
アプリケーション	適用あり: WB
種交差性	交差種: Human 交差が予測される動物種: Mouse, Rat 
免疫原	Synthetic peptide corresponding to Human VE Cadherin (phospho Y685).
ポジティブ・コントロール	Human umbilical vein endothelial cells stimulated with pervanadate.
特記事項	Do not aliquot. The Life Science industry has been in the grips of a reproducibility crisis for a number of years. Abcam is leading the way in addressing this with our range of recombinant monoclonal antibodies and knockout edited cell lines for gold-standard validation. Please check that this product meets your needs before purchasing. If you have any questions, special requirements or concerns, please send us an inquiry and/or contact our Support team ahead of purchase. Recommended alternatives for this product can be found below, along with publications, customer reviews and Q&As

製品の特性

製品の状態	Liquid
保存方法	Shipped at 4°C. Store at -20°C. Stable for 12 months at -20°C.
バッファー	Preservative: 0.05% Sodium azide Constituents: 49% PBS, 50% Glycerol, 0.1% BSA
精製度	Immunogen affinity purified
特記事項 (精製)	ab119785 was cross-adsorbed to an unrelated phospho-tyrosine peptide and unphosphorylated VE Cadherin (Y685) peptide before affinity purification using phospho-VE Cadherin (Y685) peptide.

ポリ/モノ
アイソタイプ
ポリクローナル
IgG

アプリケーション

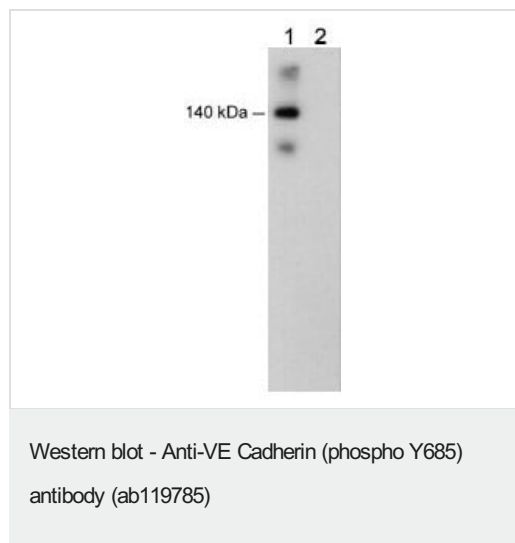
The Abpromise guarantee **Abpromise保証は、** 次のテスト済みアプリケーションにおけるab119785の使用に適用されます
アプリケーションノートには、推奨の開始希釈率がありますが、適切な希釈率につきましてはご確認ください。

アプリケーション	Abreviews	特記事項
WB	★★★★☆ (2)	1/1000. Detects a band of approximately 140 kDa (predicted molecular weight: 88 kDa).

ターゲット情報

機能	Cadherins are calcium dependent cell adhesion proteins. They preferentially interact with themselves in a homophilic manner in connecting cells; cadherins may thus contribute to the sorting of heterogeneous cell types. This cadherin may play a important role in endothelial cell biology through control of the cohesion and organization of the intercellular junctions. It associates with alpha-catenin forming a link to the cytoskeleton.
組織特異性	Endothelial tissues and brain.
配列類似性	Contains 5 cadherin domains.
翻訳後修飾	Phosphorylated on tyrosine residues by KDR/VEGFR-2. Dephosphorylated by PTPRB.
細胞内局在	Cell junction. Cell membrane. Found at cell-cell boundaries and probably at cell-matrix boundaries.

画像



All lanes : Anti-VE Cadherin (phospho Y685) antibody (ab119785)
at 1/1000 dilution

Lane 1 : Human umbilical vein endothelial
cells stimulated with pervanadate (1 mM) for 30 min.

Lane 2 : Human umbilical vein endothelial
cells stimulated with pervanadate (1 mM) for 30 min then treated
with
alkaline phosphatase

Predicted band size: 88 kDa
Observed band size: 140 kDa

Please note: All products are "FOR RESEARCH USE ONLY. NOT FOR USE IN DIAGNOSTIC PROCEDURES"

Our Abpromise to you: Quality guaranteed and expert technical support

- Replacement or refund for products not performing as stated on the datasheet
- Valid for 12 months from date of delivery
- Response to your inquiry within 24 hours

- We provide support in Chinese, English, French, German, Japanese and Spanish
- Extensive multi-media technical resources to help you
- We investigate all quality concerns to ensure our products perform to the highest standards

If the product does not perform as described on this datasheet, we will offer a refund or replacement. For full details of the Abpromise, please visit <https://www.abcam.co.jp/abpromise> or contact our technical team.

Terms and conditions

- Guarantee only valid for products bought direct from Abcam or one of our authorized distributors