

Anti-Vasopressin antibody ab68669

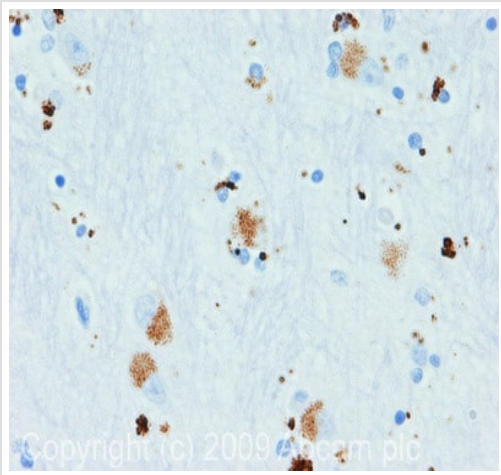
★★★★☆ [3 Abreviews](#) [4 References](#) [画像数 2](#)

製品の概要

製品名	Anti-Vasopressin antibody
製品の詳細	Rabbit polyclonal to Vasopressin
由来種	Rabbit
アプリケーション	適用あり: IHC-P, ELISA 適用なし: WB
種交差性	交差種: Human 交差が予測される動物種: Mouse, Rat, Sheep, Cow, Cat, Dog, Pig 
免疫原	Synthetic peptide corresponding to Human Vasopressin aa 1-100 conjugated to keyhole limpet haemocyanin. (Peptide available as ab68668)
特記事項	<p>The Life Science industry has been in the grips of a reproducibility crisis for a number of years. Abcam is leading the way in addressing this with our range of recombinant monoclonal antibodies and knockout edited cell lines for gold-standard validation. Please check that this product meets your needs before purchasing.</p> <p>If you have any questions, special requirements or concerns, please send us an inquiry and/or contact our Support team ahead of purchase. Recommended alternatives for this product can be found below, along with publications, customer reviews and Q&As</p>

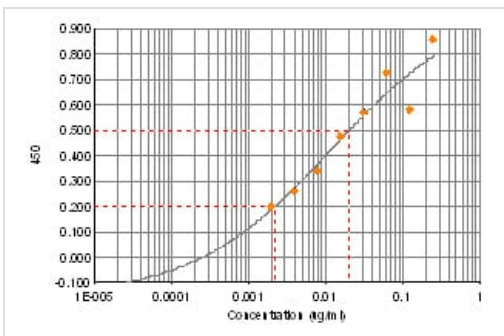
製品の特性

製品の状態	Liquid
保存方法	Shipped at 4°C. Store at +4°C short term (1-2 weeks). Upon delivery aliquot. Store at -20°C or -80°C. Avoid freeze / thaw cycle.
バッファー	pH: 7.40 Preservative: 0.02% Sodium azide Constituent: PBS
精製度	Batches of this product that have a concentration < 1mg/ml may have BSA added as a stabilising agent. If you would like information about the formulation of a specific lot, please contact our scientific support team who will be happy to help. Immunogen affinity purified



IHC image of Vasopressin staining in human Hippocampus FFPE section, performed on a Bond™ system using the standard protocol F. The section was pre-treated using heat mediated antigen retrieval with sodium citrate buffer (pH6, epitope retrieval solution 1) for 20 mins. The section was then incubated with ab68669 1µg/ml, for 15 mins at room temperature and detected using an HRP conjugated compact polymer system. DAB was used as the chromogen. The section was then counterstained with haematoxylin and mounted with DPX

Immunohistochemistry (Formalin/PFA-fixed paraffin-embedded sections) - Anti-Vasopressin antibody (ab68669)



ELISA using ab68669 at varying antibody concentrations. The black line indicates binding to the vasopressin peptide [ab68668](#).

ELISA - Anti-Vasopressin antibody (ab68669)

Please note: All products are "FOR RESEARCH USE ONLY. NOT FOR USE IN DIAGNOSTIC PROCEDURES"

Our Abpromise to you: Quality guaranteed and expert technical support

- Replacement or refund for products not performing as stated on the datasheet
- Valid for 12 months from date of delivery
- Response to your inquiry within 24 hours

- We provide support in Chinese, English, French, German, Japanese and Spanish
- Extensive multi-media technical resources to help you
- We investigate all quality concerns to ensure our products perform to the highest standards

If the product does not perform as described on this datasheet, we will offer a refund or replacement. For full details of the Abpromise, please visit <https://www.abcam.co.jp/abpromise> or contact our technical team.

Terms and conditions

- Guarantee only valid for products bought direct from Abcam or one of our authorized distributors