


Anti-UQCRFS1/RISP antibody [5A5] ab14746

★★★★★ **5 Abreviews** **77 References** 画像数 4

製品の概要

製品名	Anti-UQCRFS1/RISP antibody [5A5]
製品の詳細	Mouse monoclonal [5A5] to UQCRFS1/RISP
由来種	Mouse
アプリケーション	適用あり: WB, Flow Cyt, IHC-P
種交差性	交差種: Mouse, Rat, Cow, Human 交差が予測される動物種: Pig 
免疫原	Full length native protein (purified). This information is proprietary to Abcam and/or its suppliers.
ポジティブ・コントロール	Human, bovine, rat and murine heart mitochondria. In Flow Cytometry, this antibody gave a positive signal in Raji cells.
特記事項	<p>This antibody clone is manufactured by Abcam. If you require a custom buffer formulation or conjugation for your experiments, please contact orders@abcam.com.</p> <p>The Life Science industry has been in the grips of a reproducibility crisis for a number of years. Abcam is leading the way in addressing this with our range of recombinant monoclonal antibodies and knockout edited cell lines for gold-standard validation. Please check that this product meets your needs before purchasing.</p> <p>If you have any questions, special requirements or concerns, please send us an inquiry and/or contact our Support team ahead of purchase. Recommended alternatives for this product can be found below, along with publications, customer reviews and Q&As</p> <p>Product was previously marketed under the MitoSciences sub-brand.</p>

製品の特性

製品の状態	Liquid
保存方法	Shipped at 4°C. Store at +4°C.
バッファー	pH: 7.5 Preservative: 0.02% Sodium azide Constituent: HEPES buffered saline
精製度	Immunogen affinity purified
特記事項 (精製)	Near homogeneity as judged by SDS-PAGE. The antibody was produced in vitro using hybridomas grown in serum-free medium, and then purified by biochemical fractionation.

ポリ/モノ	モノクローナル
クローン名	5A5
アイソタイプ	IgG2b
軽鎖の種類	kappa

アプリケーション

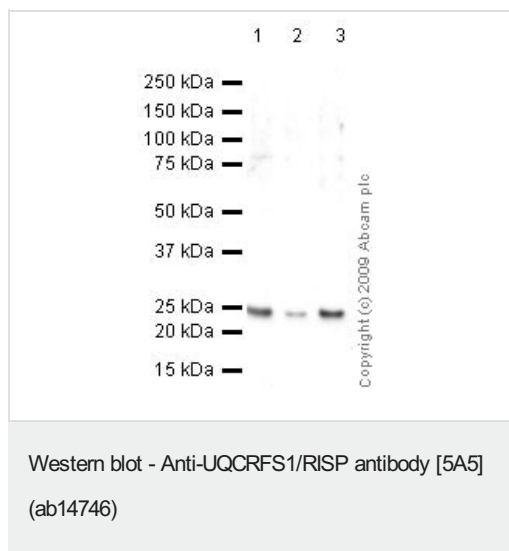
The Abpromise guarantee **Abpromise保証は、** 次のテスト済みアプリケーションにおけるab14746の使用に適用されます
 アプリケーションノートには、推奨の開始希釈率がありますが、適切な希釈率につきましてはご検討ください。

アプリケーション	Abreviews	特記事項
WB	★★★★★ (4)	Use a concentration of 1 µg/ml. Detects a band of approximately 25 kDa.
Flow Cyt		Use 1µg for 10 ⁶ cells. ab170192 - Mouse monoclonal IgG2b, is suitable for use as an isotype control with this antibody.
IHC-P	★★★★★ (1)	Use a concentration of 2 µg/ml. Perform heat mediated antigen retrieval with Tris/EDTA buffer pH 9.0 before commencing with IHC staining protocol.

ターゲット情報

機能	<p>Component of the ubiquinol-cytochrome c reductase complex (complex III or cytochrome b-c1 complex), which is a respiratory chain that generates an electrochemical potential coupled to ATP synthesis.</p> <p>The transit peptide of the Rieske protein seems to form part of the bc1 complex and is considered to be the subunit 11/IX of that complex.</p>
配列類似性	Contains 1 Rieske domain.
細胞内局在	Mitochondrion inner membrane.

画像



All lanes : Anti-UQCRFS1/RISP antibody [5A5] (ab14746) at 0.5 μ g/ml

Lane 1 : Hela Whole Cell Lysate - Hydroxyurea Treated

Lane 2 : Hela Whole Cell Lysate - Bleomycin Treated

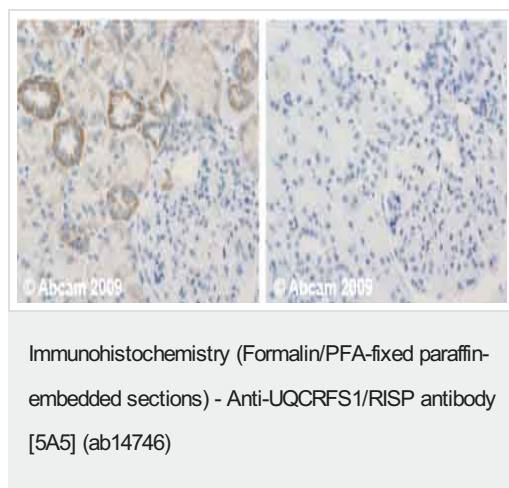
Lane 3 : Hela Whole Cell Lysate - Staurosporine Treated

Lysates/proteins at 10 μ g per lane.

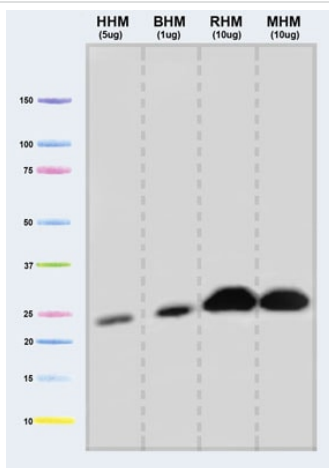
Secondary

All lanes : Mouse IgG - H&L - Pre-Adsorbed (HRP) at 1/3000 dilution

Observed band size: 25 kDa



Human normal kidney (cortex). Staining is observed intracellular. Left panel: with primary antibody at 2 μ g/ml. Right panel: isotype control. Sections were stained using an automated system DAKO Autostainer Plus , at room temperature: sections were rehydrated and antigen retrieved with the Dako 3 in 1 AR buffers citrate EDTA pH 9.0 in a DAKO PT Link. Slides were peroxidase blocked in 3% H₂O₂ in methanol for 10 mins. They were then blocked with Dako Protein block for 10 minutes (containing casein 0.25% in PBS) then incubated with primary antibody for 20 min and detected with Dako envision flex amplification kit for mouse for 30 minutes. Colorimetric detection was completed with Diaminobenzidine for 5 minutes. Slides were counterstained with Haematoxylin and coverslipped under DePeX. Please note that for manual staining we recommend to optimize the primary antibody concentration and incubation time (overnight incubation), and amplification may be required.



Western blot - Anti-UQCRCFS1/RISP antibody [5A5] (ab14746)

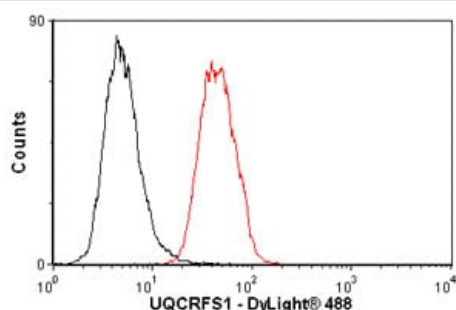
All lanes : Anti-UQCRCFS1/RISP antibody [5A5] (ab14746) at 1 µg/ml

Lane 1 : Isolated mitochondria from human heart at 5 µg

Lane 2 : Isolated mitochondria from bovine heart at 1 µg

Lane 3 : Isolated mitochondria from rat heart at 10 µg

Lane 4 : Isolated mitochondria from mouse heart at 10 µg



Flow Cytometry - Anti-UQCRCFS1/RISP antibody [5A5] (ab14746)

Overlay histogram showing Raji cells stained with ab14746 (red line). The cells were fixed with 80% methanol (5 min) and then permeabilized with 0.1% PBS-Tween for 20 min. The cells were then incubated in 1x PBS / 10% normal goat serum / 0.3M glycine to block non-specific protein-protein interactions. The cells were then incubated with the antibody (ab14746, 1 µg/1x10⁶ cells) for 30 min at 22°C. The secondary antibody used was DyLight® 488 goat anti-mouse IgG (H+L) (**ab96879**) at 1/500 dilution for 30 min at 22°C. Isotype control antibody (black line) was mouse IgG2b [PLPV219] (**ab91366**, 2 µg/1x10⁶ cells) used under the same conditions. Acquisition of >5,000 events was performed. This antibody gave a positive signal in Raji cells fixed with 4% paraformaldehyde (10 min)/permeabilized in 0.1% PBS-Tween used under the same conditions.

Please note: All products are "FOR RESEARCH USE ONLY. NOT FOR USE IN DIAGNOSTIC PROCEDURES"

Our Abpromise to you: Quality guaranteed and expert technical support

- Replacement or refund for products not performing as stated on the datasheet
- Valid for 12 months from date of delivery
- Response to your inquiry within 24 hours
- We provide support in Chinese, English, French, German, Japanese and Spanish
- Extensive multi-media technical resources to help you
- We investigate all quality concerns to ensure our products perform to the highest standards

If the product does not perform as described on this datasheet, we will offer a refund or replacement. For full details of the Abpromise, please visit <https://www.abcam.co.jp/abpromise> or contact our technical team.

Terms and conditions

- Guarantee only valid for products bought direct from Abcam or one of our authorized distributors