

Anti-Ubiquitin antibody [EPR8830] ab134953

リコンビナント **RabMAb**

★★★★★ **3 Abreviews** **74 References** 画像数 **14**

製品の概要

製品名	Anti-Ubiquitin antibody [EPR8830]
製品の詳細	Rabbit monoclonal [EPR8830] to Ubiquitin
由来種	Rabbit
アプリケーション	適用あり: WB, IHC-P, ICC/IF, Flow Cyt (Intra)
種交差性	交差種: Mouse, Rat, Human
免疫原	Synthetic peptide. This information is proprietary to Abcam and/or its suppliers.
ポジティブ・コントロール	ICC: JAR cells. Flow Cyt (intra): JAR and HepG2 cells. WB: Rat brain and kidney lysate. Mouse kidney lysate. JAR, MCF7, HeLa, HEK-293T and HEK-293 whole cell lysate. IHC-P: Mouse embryo tissue. Rat and mouse liver tissue. Human bladder carcinoma and breast carcinoma tissue.
特記事項	<p>This product is a recombinant monoclonal antibody, which offers several advantages including:</p> <ul style="list-style-type: none"> - High batch-to-batch consistency and reproducibility - Improved sensitivity and specificity - Long-term security of supply - Animal-free production <p>For more information see here.</p> <p>Our RabMAb[®] technology is a patented hybridoma-based technology for making rabbit monoclonal antibodies. For details on our patents, please refer to RabMAb[®] patents.</p>

製品の特性

製品の状態	Liquid
保存方法	Shipped at 4°C. Store at +4°C short term (1-2 weeks). Upon delivery aliquot. Store at -20°C long term. Avoid freeze / thaw cycle. Stable for 12 months at -20°C.
バッファー	<p>pH: 7.2</p> <p>Preservative: 0.01% Sodium azide</p> <p>Constituents: 40% Glycerol, 0.05% BSA, 59% PBS</p>
精製度	Protein A purified
ポリ/モノ	モノクローナル
クローン名	EPR8830

アプリケーション

The Abpromise guarantee Abpromise保証は、次のテスト済みアプリケーションにおけるab134953の使用に適用されます
アプリケーションノートには、推奨の開始希釈率がありますが、適切な希釈率につきましてはご検討ください。

アプリケーション	Abreviews	特記事項
WB	★★★★★ (1)	1/1000 - 1/10000. Predicted molecular weight: 8 kDa. Monoubiquitin molecular weight
IHC-P	★★★★★ (1)	1/800. Perform heat mediated antigen retrieval with Tris/EDTA buffer pH 9.0 before commencing with IHC staining protocol. See <u>IHC antigen retrieval protocols</u> . For unpurified use at 1/250 - 1/500.
ICC/IF		1/100. For unpurified use at 1/250 - 1/500.
Flow Cyt (Intra)		1/70. For unpurified use at 1/100 - 1/1000. ab172730 - Rabbit monoclonal IgG, is suitable for use as an isotype control with this antibody.

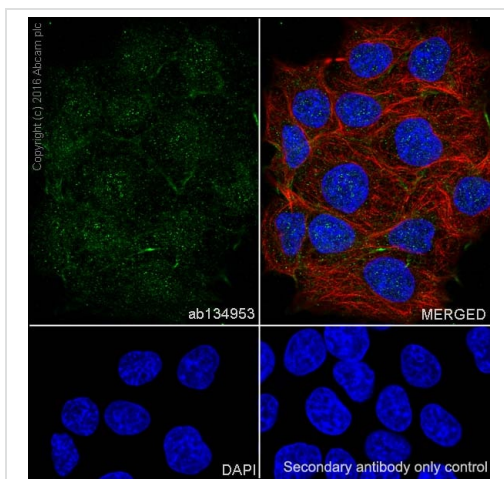
ターゲット情報

関連性

Function: Ubiquitin exists either covalently attached to another protein, or free (unanchored). When covalently bound, it is conjugated to target proteins via an isopeptide bond either as a monomer (monoubiquitin), a polymer linked via different Lys residues of the ubiquitin (polyubiquitin chains) or a linear polymer linked via the initiator Met of the ubiquitin (linear polyubiquitin chains). Polyubiquitin chains, when attached to a target protein, have different functions depending on the Lys residue of the ubiquitin that is linked: Lys-6-linked may be involved in DNA repair; Lys-11-linked is involved in ERAD (endoplasmic reticulum-associated degradation) and in cell-cycle regulation; Lys-29-linked is involved in lysosomal degradation; Lys-33-linked is involved in kinase modification; Lys-48-linked is involved in protein degradation via the proteasome; Lys-63-linked is involved in endocytosis, DNA-damage responses as well as in signaling processes leading to activation of the transcription factor NF-kappa-B. Linear polymer chains formed via attachment by the initiator Met lead to cell signaling. Ubiquitin is usually conjugated to Lys residues of target proteins, however, in rare cases, conjugation to Cys or Ser residues has been observed. When polyubiquitin is free (unanchored-polyubiquitin), it also has distinct roles, such as in activation of protein kinases, and in signaling. Similarity: Belongs to the ubiquitin family. Contains 3 ubiquitin-like domains.

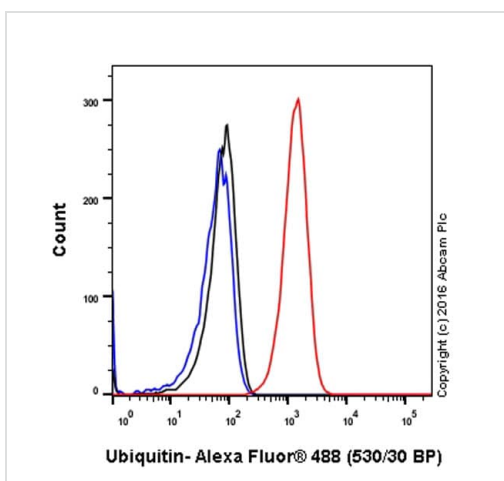
細胞内局在 Cell Membrane, Cytoplasmic and Nuclear

画像



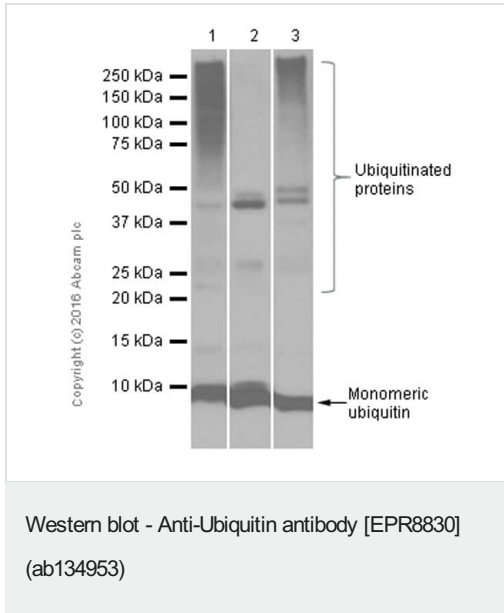
Immunocytochemistry/ Immunofluorescence - Anti-Ubiquitin antibody [EPR8830] (ab134953)

Immunocytochemistry/ Immunofluorescence analysis of JAR (Human placenta choriocarcinoma cell line) cells labeling Ubiquitin with Purified ab134953 at 1:100 dilution (7.2µg/ml). Cells were fixed in 4% Paraformaldehyde and permeabilized with 0.1% tritonX-100. Cells were counterstained with Ab195889 Anti-alpha Tubulin antibody [DM1A] - Microtubule Marker (Alexa Fluor® 594) 1:200 (2.5 µg/ml). **ab150077** Goat anti rabbit IgG(Alexa Fluor® 488) was used as the secondary antibody at 1:1000 dilution. DAPI nuclear counterstain. PBS instead of the primary antibody was used as the secondary antibody only control.



Flow Cytometry (Intracellular) - Anti-Ubiquitin antibody [EPR8830] (ab134953)

Intracellular Flow Cytometry analysis of JAR (Human placenta choriocarcinoma cell line) cells labeling Ubiquitin with purified ab134953 at 1/70 dilution (10 ug/ml) (red). Cells were fixed with 4% Paraformaldehyde. A Goat anti rabbit IgG (Alexa Fluor® 488) secondary antibody was used at 1/2000 dilution. Isotype control - Rabbit monoclonal IgG (Black). Unlabeled control - Cell without incubation with primary antibody and secondary antibody (Blue).



All lanes : Anti-Ubiquitin antibody [EPR8830] (ab134953) at 0.7 µg/ml (Purified)

Lane 1 : Rat brain lysate

Lane 2 : Mouse kidney lysate

Lane 3 : Rat kidney lysate

Lysates/proteins at 20 µg per lane.

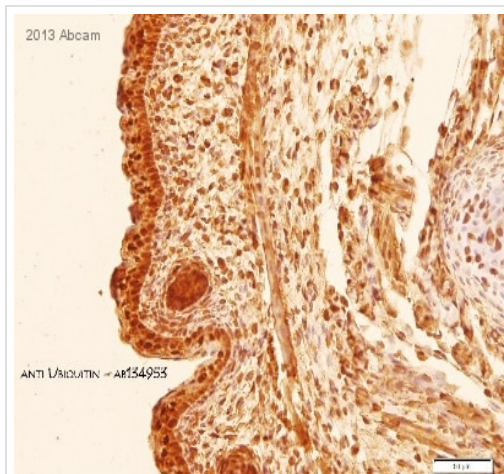
Secondary

All lanes : Goat Anti-Rabbit IgG H&L (HRP) (**ab97051**) at 1/20000 dilution

Predicted band size: 8 kDa

Observed band size: 8 kDa

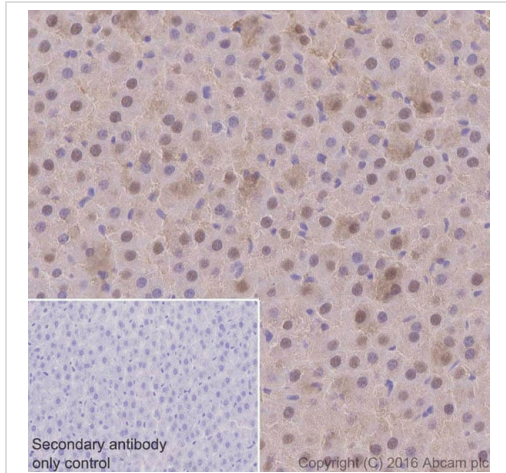
Blocking and diluting buffer: 5% NFDM/TBST



ab134953 staining Ubiquitin in Mouse embryo tissue sections by Immunohistochemistry (IHC-P - paraformaldehyde-fixed, paraffin-embedded sections). Tissue was fixed with formaldehyde and blocked with 1% FBS/BSA for 1 hour at room temperature; antigen retrieval was by heat mediation in citrate buffer, pH6. Samples were incubated with primary antibody (1/100 in 1% FBS/BSA) for 16 hours at 4°C. An undiluted HRP-conjugated Goat anti-rabbit IgG polyclonal was used as the secondary antibody.

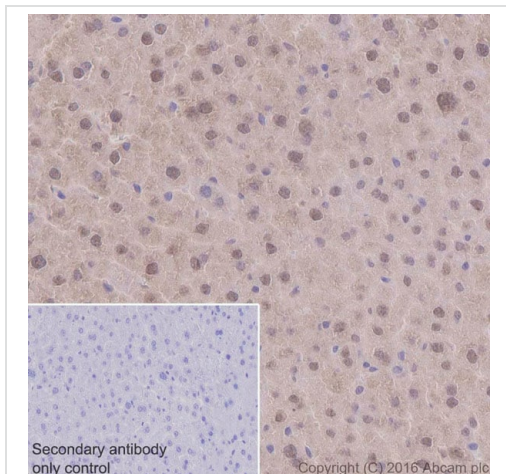
Immunohistochemistry (Formalin/PFA-fixed paraffin-embedded sections) - Anti-Ubiquitin antibody [EPR8830] (ab134953)

This image is courtesy of an anonymous Abreview



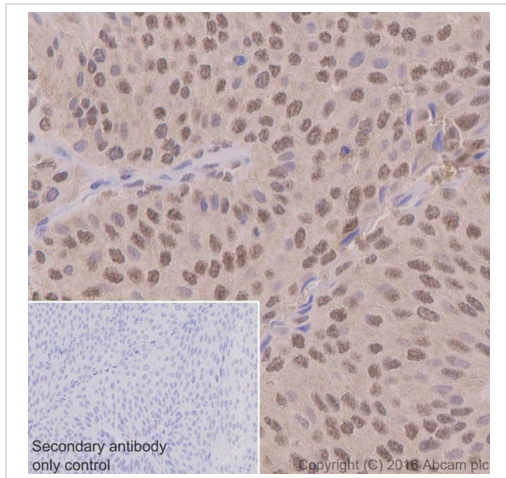
Immunohistochemistry (Formalin/PFA-fixed paraffin-embedded sections) - Anti-Ubiquitin antibody [EPR8830] (ab134953)

Immunohistochemistry (Formalin/PFA-fixed paraffin-embedded sections) analysis of Rat liver tissue sections labeling Ubiquitin with Purified ab134953 at 1:800 dilution (0.9 µg/ml). Heat mediated antigen retrieval was performed using EDTA Buffer, pH 9.0. Tissue was counterstained with Hematoxylin. [ab97051](#) Goat Anti-Rabbit IgG H&L (HRP) secondary antibody was used at 1:500 dilution. PBS instead of the primary antibody was used as the negative control.



Immunohistochemistry (Formalin/PFA-fixed paraffin-embedded sections) - Anti-Ubiquitin antibody [EPR8830] (ab134953)

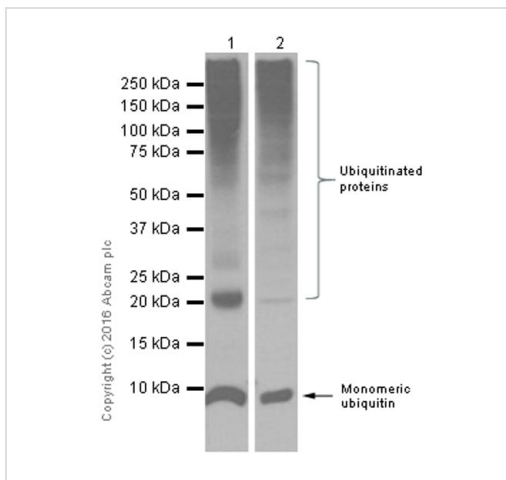
Immunohistochemistry (Formalin/PFA-fixed paraffin-embedded sections) analysis of Mouse liver tissue sections labeling Ubiquitin with Purified ab134953 at 1:800 dilution (0.9 µg/ml). Heat mediated antigen retrieval was performed using EDTA Buffer, pH 9.0. Tissue was counterstained with Hematoxylin. [ab97051](#) Goat Anti-Rabbit IgG H&L (HRP) secondary antibody was used at 1:500 dilution. PBS instead of the primary antibody was used as the negative control.



Immunohistochemistry (Formalin/PFA-fixed paraffin-embedded sections) - Anti-Ubiquitin antibody [EPR8830] (ab134953)

Immunohistochemistry (Formalin/PFA-fixed paraffin-embedded sections) analysis of Human bladder carcinoma tissue sections labeling Ubiquitin with Purified ab134953 at 1:800 dilution (0.9 µg/ml). Heat mediated antigen retrieval was performed using EDTA Buffer, pH 9.0. Tissue was counterstained with Hematoxylin.

ab97051 Goat Anti-Rabbit IgG H&L (HRP) secondary antibody was used at 1:500 dilution. PBS instead of the primary antibody was used as the negative control.



Western blot - Anti-Ubiquitin antibody [EPR8830] (ab134953)

All lanes : Anti-Ubiquitin antibody [EPR8830] (ab134953) at 0.1 µg/ml (Purified)

Lane 1 : JAR (Human placenta choriocarcinoma epithelial cell) whole cell lysate

Lane 2 : 293 (Human embryonic kidney epithelial cell) whole cell lysate

Lysates/proteins at 20 µg per lane.

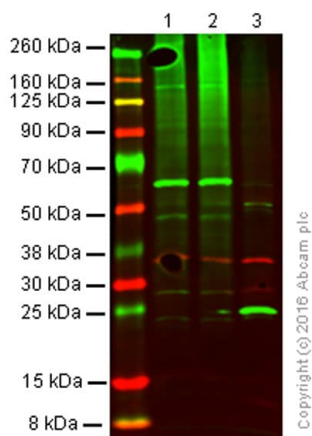
Secondary

All lanes : Goat Anti-Rabbit IgG H&L (HRP) (**ab97051**) at 1/20000 dilution

Predicted band size: 8 kDa

Observed band size: 8 kDa

Blocking and diluting buffer: 5% NFDM/TBST



Western blot - Anti-Ubiquitin antibody [EPR8830]
(ab134953)

All lanes : Anti-Ubiquitin antibody [EPR8830] (ab134953) at 1/200 dilution

Lane 1 : MCF-7 Whole cell lysate

Lane 2 : MCF-7 Whole cell lysate + MG-132 (50 μ M 90 min)

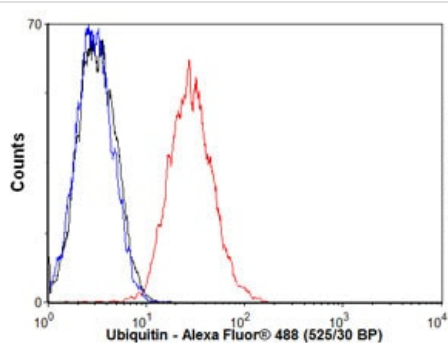
Lane 3 : Mouse Brain

Lysates/proteins at 20 μ g per lane.

Performed under reducing conditions.

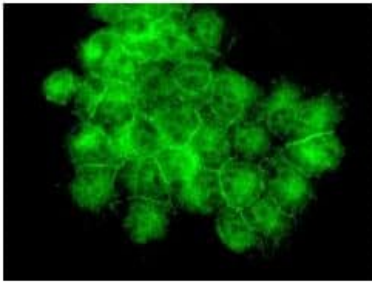
Predicted band size: 8 kDa

This blot was produced using a 4-12% Bis-tris gel under the MES buffer system. The gel was run at 200V for 35 minutes before being transferred onto a nitrocellulose membrane at 30V for 70 minutes .ab134953 and ab8245 (loading control to GAPDH) were diluted 1/200 and 1/10 000 respectively and incubated overnight at 4°C. Blots were developed with goat anti-rabbit IgG (H + L) and goat anti-mouse IgG (H + L) secondary antibodies at 1/10 000 dilution for 1 h at room temperature before imaging using the Licor Odyssey CLx.



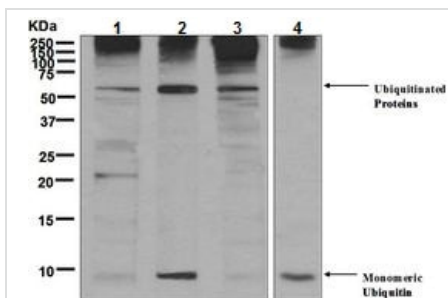
Flow Cytometry (Intracellular) - Anti-Ubiquitin
antibody [EPR8830] (ab134953)

Overlay histogram showing HepG2 cells stained with ab134953 (red line). The cells were fixed with 80% methanol (5 min) and then permeabilized with 0.1% PBS-Tween for 20 min. The cells were then incubated in 1x PBS / 10% normal goat serum / 0.3M glycine to block non-specific protein-protein interactions followed by the antibody (ab134953, 1/1000 dilution) for 30 min at 22°C. The secondary antibody used was Alexa Fluor® 488 goat anti-rabbit IgG (H&L) (**ab150077**) at 1/2000 dilution for 30 min at 22°C. Isotype control antibody (black line) was rabbit IgG (monoclonal) (0.1 μ g/1x10⁶ cells) used under the same conditions. Unlabelled sample (blue line) was also used as a control. Acquisition of >5,000 events were collected using a 20mW Argon ion laser (488nm) and 525/30 bandpass filter. This antibody gave a positive signal in HepG2 cells fixed with 4% paraformaldehyde (10 min)/permeabilized with 0.1% PBS-Tween for 20 min used under the same conditions.



Immunofluorescent staining of JAR cells labelling Ubiquitin using ab134953 at 1/250 dilution

Immunocytochemistry/ Immunofluorescence - Anti-Ubiquitin antibody [EPR8830] (ab134953)



Western blot - Anti-Ubiquitin antibody [EPR8830] (ab134953)

All lanes : Anti-Ubiquitin antibody [EPR8830] (ab134953) at 1/1000 dilution

Lane 1 : 293T cell lysate

Lane 2 : HepG2 cell lysate

Lane 3 : HeLa cell lysate

Lane 4 : JAR cell lysate

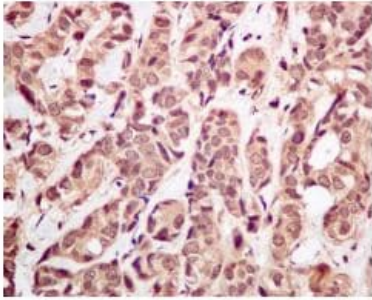
Lysates/proteins at 10 µg per lane.

Secondary

All lanes : HRP labelled goat anti rabbit at 1/2000 dilution

Predicted band size: 8 kDa

Note: Ubiquitin exists as monomeric ubiquitin (8 kDa) or attached to other proteins.



Immunohistochemical analysis of paraffin embedded Human breast carcinoma tissue labelling Ubiquitin with ab134953 at 1/250 dilution

Immunohistochemistry (Formalin/PFA-fixed paraffin-embedded sections) - Anti-Ubiquitin antibody [EPR8830] (ab134953)

Why choose a recombinant antibody?



Anti-Ubiquitin antibody [EPR8830] (ab134953)

Please note: All products are "FOR RESEARCH USE ONLY. NOT FOR USE IN DIAGNOSTIC PROCEDURES"

Our Abpromise to you: Quality guaranteed and expert technical support

- Replacement or refund for products not performing as stated on the datasheet
- Valid for 12 months from date of delivery
- Response to your inquiry within 24 hours
- We provide support in Chinese, English, French, German, Japanese and Spanish
- Extensive multi-media technical resources to help you
- We investigate all quality concerns to ensure our products perform to the highest standards

If the product does not perform as described on this datasheet, we will offer a refund or replacement. For full details of the Abpromise, please visit <https://www.abcam.co.jp/abpromise> or contact our technical team.

Terms and conditions

- Guarantee only valid for products bought direct from Abcam or one of our authorized distributors