


Anti-Ubiquitin antibody ab223613

画像数 5

製品の概要

製品名	Anti-Ubiquitin antibody
製品の詳細	Rabbit polyclonal to Ubiquitin
由来種	Rabbit
アプリケーション	適用あり: ICC/IF, WB, IHC-P
種交差性	交差種: Mouse, Human 交差が予測される動物種: Rat, Sheep, Rabbit, Chicken, Guinea pig, Hamster, Cow, Dog, Pig, Saccharomyces cerevisiae, Xenopus laevis, Drosophila melanogaster, Fish, Monkey, Rainbow trout, Salmo salar 
免疫原	Full length native protein (purified) corresponding to Cow Ubiquitin conjugated to keyhole limpet haemocyanin. Database link: P0CG53
ポジティブ・コントロール	WB: HEK-293 cell lysate. IHC-P: Mouse backskin tissue; Human colon carcinoma tissue. ICC/IF: HeLa cells.
特記事項	<p>The Life Science industry has been in the grips of a reproducibility crisis for a number of years. Abcam is leading the way in addressing this with our range of recombinant monoclonal antibodies and knockout edited cell lines for gold-standard validation. Please check that this product meets your needs before purchasing.</p> <p>If you have any questions, special requirements or concerns, please send us an inquiry and/or contact our Support team ahead of purchase. Recommended alternatives for this product can be found below, along with publications, customer reviews and Q&As</p>

製品の特性

製品の状態	Liquid
保存方法	Shipped at 4°C. Store at +4°C short term (1-2 weeks). Upon delivery aliquot. Store at -20°C long term. Avoid freeze / thaw cycle.
バッファー	Preservative: 0.09% Sodium azide Constituents: 50% Glycerol (glycerin, glycerine), PBS
精製度	Immunogen affinity purified
ポリ/モノ	ポリクローナル
アイソタイプ	IgG

アプリケーション

The Abpromise guarantee Abpromise保証は、次のテスト済みアプリケーションにおけるab223613の使用に適用されます
アプリケーションノートには、推奨の開始希釈率がありますが、適切な希釈率につきましてはご確認ください。

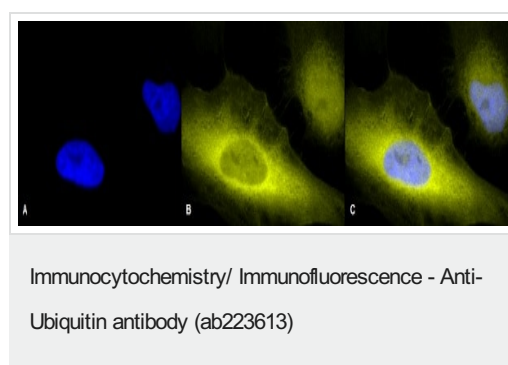
アプリケーション	Abreviews	特記事項
ICC/IF		1/100.
WB		1/1000. Predicted molecular weight: 26 kDa.
IHC-P		1/100.

ターゲット情報

関連性 Function: Ubiquitin exists either covalently attached to another protein, or free (unanchored). When covalently bound, it is conjugated to target proteins via an isopeptide bond either as a monomer (monoubiquitin), a polymer linked via different Lys residues of the ubiquitin (polyubiquitin chains) or a linear polymer linked via the initiator Met of the ubiquitin (linear polyubiquitin chains). Polyubiquitin chains, when attached to a target protein, have different functions depending on the Lys residue of the ubiquitin that is linked: Lys-6-linked may be involved in DNA repair; Lys-11-linked is involved in ERAD (endoplasmic reticulum-associated degradation) and in cell-cycle regulation; Lys-29-linked is involved in lysosomal degradation; Lys-33-linked is involved in kinase modification; Lys-48-linked is involved in protein degradation via the proteasome; Lys-63-linked is involved in endocytosis, DNA-damage responses as well as in signaling processes leading to activation of the transcription factor NF-kappa-B. Linear polymer chains formed via attachment by the initiator Met lead to cell signaling. Ubiquitin is usually conjugated to Lys residues of target proteins, however, in rare cases, conjugation to Cys or Ser residues has been observed. When polyubiquitin is free (unanchored-polyubiquitin), it also has distinct roles, such as in activation of protein kinases, and in signaling. Similarity: Belongs to the ubiquitin family. Contains 3 ubiquitin-like domains.

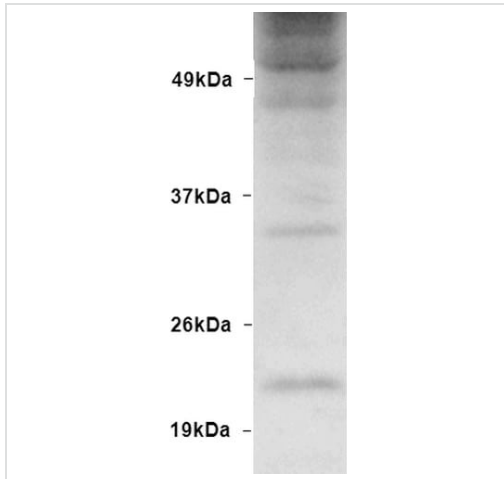
細胞内局在 Cell Membrane, Cytoplasmic and Nuclear

画像



2% formaldehyde-fixed (at room temperature for 20 mins) heat shocked HeLa (human epithelial cell line from cervix adenocarcinoma) cells stained for Ubiquitin (yellow) using ab223613 at 1/100 dilution for 12 hours at 4°C in ICC/IF, followed by Goat Anti-Rabbit R-PE at 1/200 for 2 hours at room temperature. Counterstain: DAPI (blue) nuclear stain at 1/40000 dilution for 2 hours at room temperature. Magnification: 100x.

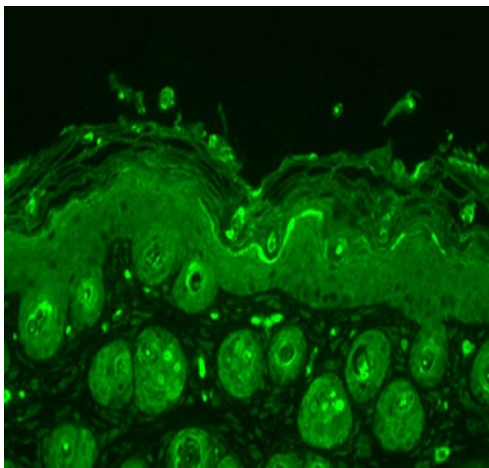
A) DAPI (blue) nuclear stain. (B) ab223613. (C) Composite. Heat Shocked at 42°C for 1 hour.



Western blot - Anti-Ubiquitin antibody (ab223613)

Anti-Ubiquitin antibody (ab223613) at 1/1000 dilution + HEK-293
(human epithelial cell line from embryonic kidney) cell lysate

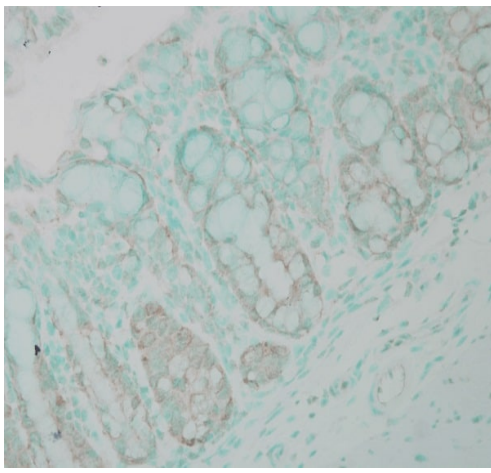
Predicted band size: 26 kDa



Immunohistochemistry (Formalin/PFA-fixed paraffin-
embedded sections) - Anti-Ubiquitin antibody
(ab223613)

Mouse backskin tissue tissue stained for Ubiquitin (green) using
ab223613 at 1/100 dilution in immunohistochemical analysis,
followed by Goat Anti-Rabbit FITC at 1/50 dilution for 1 hour at room
temperature.

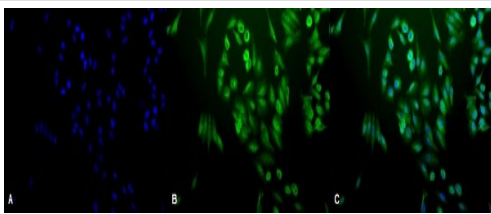
Fixation: Bouin's Fixative Solution.



Immunohistochemistry (Formalin/PFA-fixed paraffin-embedded sections) - Anti-Ubiquitin antibody (ab223613)

Formalin-fixed, paraffin-embedded human colon carcinoma tissue stained for Ubiquitin using ab223613 at 1/100000 dilution at 4°C for 12 hours in immunohistochemical analysis, followed by Goat Anti-Rabbit Biotin at 1/2000 dilution for 1 hour at room temperature. Counterstain: Methyl Green at 200uL for 2 min at room temperature.

This image was produced using an amplifying IHC wash buffer. The antibody has therefore been diluted more than is recommended for other applications..



Immunocytochemistry/ Immunofluorescence - Anti-Ubiquitin antibody (ab223613)

2% formaldehyde-fixed (at room temperature for 20 mins) HeLa (human epithelial cell line from cervix adenocarcinoma) cells stained for Ubiquitin (green) using ab223613 at 1/200 dilution for 12 hours at 4°C in ICC/IF, followed by Goat Anti-Rabbit FITC at 1/200 for 2 hours at room temperature. Counterstain: DAPI (blue) nuclear stain at 1/40000 dilution for 2 hours at room temperature.

A) DAPI (blue) nuclear stain. (B) ab223613. (C) Merge.

Please note: All products are "FOR RESEARCH USE ONLY. NOT FOR USE IN DIAGNOSTIC PROCEDURES"

Our Abpromise to you: Quality guaranteed and expert technical support

- Replacement or refund for products not performing as stated on the datasheet
- Valid for 12 months from date of delivery
- Response to your inquiry within 24 hours
- We provide support in Chinese, English, French, German, Japanese and Spanish
- Extensive multi-media technical resources to help you
- We investigate all quality concerns to ensure our products perform to the highest standards

If the product does not perform as described on this datasheet, we will offer a refund or replacement. For full details of the Abpromise, please visit <https://www.abcam.co.jp/abpromise> or contact our technical team.

Terms and conditions

- Guarantee only valid for products bought direct from Abcam or one of our authorized distributors