

### Anti-Ubiquitin antibody ab19247

★★★★★ [5 Abreviews](#) [53 References](#) [画像数 2](#)

#### 製品の概要

製品名	Anti-Ubiquitin antibody
製品の詳細	Rabbit polyclonal to Ubiquitin
由来種	Rabbit
特異性	It can identify free ubiquitin as well as ubiquitinated proteins. The antibody recognizes polyubiquitin chains more strongly than monoubiquitinated molecules.
アプリケーション	<b>適用あり:</b> WB
種交差性	<b>交差種:</b> Mouse, Human, <i>Saccharomyces cerevisiae</i>
免疫原	Full length native protein (purified) corresponding to Cow Ubiquitin conjugated to Keyhole Limpet Haemocyanin (KLH).
特記事項	<p>The Life Science industry has been in the grips of a reproducibility crisis for a number of years. Abcam is leading the way in addressing this with our range of recombinant monoclonal antibodies and knockout edited cell lines for gold-standard validation. Please check that this product meets your needs before purchasing.</p> <p>If you have any questions, special requirements or concerns, please send us an inquiry and/or contact our Support team ahead of purchase. Recommended alternatives for this product can be found below, along with publications, customer reviews and Q&amp;As</p>

#### 製品の特性

製品の状態	Liquid
保存方法	Shipped at 4°C. Store at +4°C short term (1-2 weeks). Upon delivery aliquot. Store at -20°C long term. Avoid freeze / thaw cycle.
バッファー	<p>pH: 7.20</p> <p>Preservative: 0.09% Sodium azide</p> <p>Constituents: PBS, 50% Glycerol</p>
精製度	Protein A purified
ポリ/モノ	ポリクローナル
アイソタイプ	IgG

#### アプリケーション

## The Abpromise guarantee

**Abpromise保証は、次のテスト済みアプリケーションにおけるab19247の使用に適用されます**

アプリケーションノートには、推奨の開始希釈率がありますが、適切な希釈率につきましてはご確認ください。

アプリケーション	Abreviews	特記事項
WB	★★★★★ (3)	1/1000 - 1/5000. Predicted molecular weight: 10 kDa.

## ターゲット情報

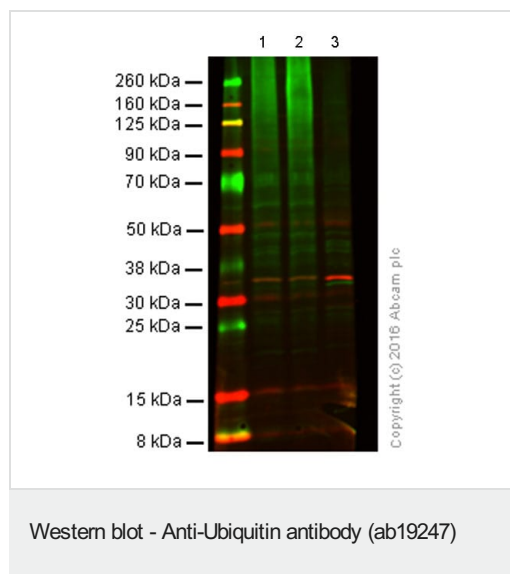
### 関連性

Function: Ubiquitin exists either covalently attached to another protein, or free (unanchored). When covalently bound, it is conjugated to target proteins via an isopeptide bond either as a monomer (monoubiquitin), a polymer linked via different Lys residues of the ubiquitin (polyubiquitin chains) or a linear polymer linked via the initiator Met of the ubiquitin (linear polyubiquitin chains). Polyubiquitin chains, when attached to a target protein, have different functions depending on the Lys residue of the ubiquitin that is linked: Lys-6-linked may be involved in DNA repair; Lys-11-linked is involved in ERAD (endoplasmic reticulum-associated degradation) and in cell-cycle regulation; Lys-29-linked is involved in lysosomal degradation; Lys-33-linked is involved in kinase modification; Lys-48-linked is involved in protein degradation via the proteasome; Lys-63-linked is involved in endocytosis, DNA-damage responses as well as in signaling processes leading to activation of the transcription factor NF-kappa-B. Linear polymer chains formed via attachment by the initiator Met lead to cell signaling. Ubiquitin is usually conjugated to Lys residues of target proteins, however, in rare cases, conjugation to Cys or Ser residues has been observed. When polyubiquitin is free (unanchored-polyubiquitin), it also has distinct roles, such as in activation of protein kinases, and in signaling. Similarity: Belongs to the ubiquitin family. Contains 3 ubiquitin-like domains.

### 細胞内局在

Cell Membrane, Cytoplasmic and Nuclear

## 画像



### All lanes :

**Lane 1 :** HeLa cell lysate (Control, untreated)

**Lane 2 :** HeLa cells treated with MG132 (50 uM for 90 min)

**Lane 3 :** Mouse Brain

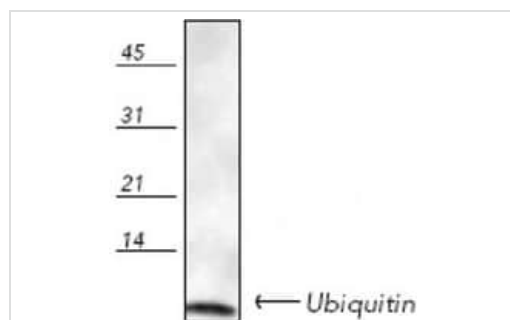
Lysates/proteins at 20 µg per lane.

Performed under reducing conditions.

**Predicted band size:** 10 kDa

This blot was produced using a 4-12% Bis-tris gel under the MES buffer system. The gel was run at 200V for 35 minutes before being

transferred onto a nitrocellulose membrane at 30V for 70 minutes. ab19247 and **ab8245 (loading control to GAPDH)** were diluted 1/200 and 1/10000 respectively and incubated overnight at 4°C. Blots were developed with goat anti-rabbit IgG (H + L) and goat anti-mouse IgG (H + L) secondary antibodies at 1/10 000 dilution for 1 h at room temperature before imaging using the Licor Odyssey CLx.



Western blot - Anti-Ubiquitin antibody (ab19247)

Anti-Ubiquitin antibody (ab19247) at 1/1000 dilution + Heat-shocked HeLa cell lysate

**Predicted band size:** 10 kDa

**Please note:** All products are "FOR RESEARCH USE ONLY. NOT FOR USE IN DIAGNOSTIC PROCEDURES"

#### Our Abpromise to you: Quality guaranteed and expert technical support

- Replacement or refund for products not performing as stated on the datasheet
- Valid for 12 months from date of delivery
- Response to your inquiry within 24 hours
- We provide support in Chinese, English, French, German, Japanese and Spanish
- Extensive multi-media technical resources to help you
- We investigate all quality concerns to ensure our products perform to the highest standards

If the product does not perform as described on this datasheet, we will offer a refund or replacement. For full details of the Abpromise, please visit <https://www.abcam.co.jp/abpromise> or contact our technical team.

#### Terms and conditions

- Guarantee only valid for products bought direct from Abcam or one of our authorized distributors