


Anti-UBE2M/UBC12 antibody [EPR5334] ab124946

リコンビナント RabMAb[®]

1 References [画像数 2](#)

製品の概要

製品名	Anti-UBE2M/UBC12 antibody [EPR5334]
製品の詳細	Rabbit monoclonal [EPR5334] to UBE2M/UBC12
由来種	Rabbit
アプリケーション	適用あり: WB 適用なし: Flow Cyt, IHC-P or IP
種交差性	交差種: Human 交差が予測される動物種: Mouse, Rat 
免疫原	Synthetic peptide within Human UBE2M/UBC12 aa 50-150. The exact sequence is proprietary.
ポジティブ・コントロール	Human 293T and Ramos cell line lysates
特記事項	<p>This product is a recombinant monoclonal antibody, which offers several advantages including:</p> <ul style="list-style-type: none">- High batch-to-batch consistency and reproducibility- Improved sensitivity and specificity- Long-term security of supply- Animal-free production <p>For more information see here.</p> <p>Our RabMAb[®] technology is a patented hybridoma-based technology for making rabbit monoclonal antibodies. For details on our patents, please refer to RabMAb[®] patents.</p>

製品の特性

製品の状態	Liquid
保存方法	Shipped at 4°C. Store at -20°C. Stable for 12 months at -20°C.
バッファー	pH: 7.20 Preservative: 0.05% Sodium azide Constituents: 40% Glycerol (glycerin, glycerine), 9.85% Tris glycine, 50% Tissue culture supernatant
精製度	Protein A purified
ポリ/モノ	モノクローナル
クローン名	EPR5334

アイソタイプ

IgG

アプリケーション

The Abpromise guarantee **Abpromise保証は、次のテスト済みアプリケーションにおけるab124946の使用に適用されず**
アプリケーションノートには、推奨の開始希釈率がありますが、適切な希釈率につきましてはご検討ください。

アプリケーション	Abreviews	特記事項
WB		1/1000 - 1/10000. Predicted molecular weight: 21 kDa.

追加情報

Is unsuitable for Flow Cyt, IHC-P or IP.

ターゲット情報

機能

Accepts the ubiquitin-like protein NEDD8 from the UBA3-NAE1 E1 complex and catalyzes its covalent attachment to other proteins. The specific interaction with the E3 ubiquitin ligase RBX1, but not RBX2, suggests that the RBX1-UBE2M complex neddylates specific target proteins, such as CUL1, CUL2, CUL3 and CUL4. Involved in cell proliferation.

パスウェイ

Protein modification; protein neddylation.

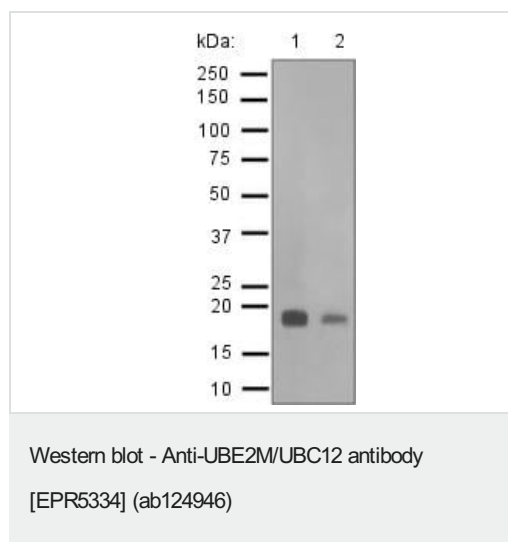
配列類似性

Belongs to the ubiquitin-conjugating enzyme family. UBC12 subfamily.

ドメイン

Both the N-terminal docking peptide and the catalytic core domain must bind the UBA3-NAE1 complex simultaneously for optimal transfer of NEDD8.

画像



All lanes : Anti-UBE2M/UBC12 antibody [EPR5334] (ab124946)
at 1/1000 dilution

Lane 1 : 293T cell lysate

Lane 2 : Ramos cell lysate

Lysates/proteins at 10 µg per lane.

Secondary

All lanes : standard HRP labelled goat anti-rabbit at 1/2000 dilution

Predicted band size: 21 kDa

Why choose a recombinant antibody?



Research with confidence
Consistent and reproducible results



Long-term and scalable supply
Recombinant technology



Success from the first experiment
Confirmed specificity



Ethical standards compliant
Animal-free production

Anti-UBE2M/UBC12 antibody [EPR5334]

(ab124946)

Please note: All products are "FOR RESEARCH USE ONLY. NOT FOR USE IN DIAGNOSTIC PROCEDURES"

Our Abpromise to you: Quality guaranteed and expert technical support

- Replacement or refund for products not performing as stated on the datasheet
- Valid for 12 months from date of delivery
- Response to your inquiry within 24 hours
- We provide support in Chinese, English, French, German, Japanese and Spanish
- Extensive multi-media technical resources to help you
- We investigate all quality concerns to ensure our products perform to the highest standards

If the product does not perform as described on this datasheet, we will offer a refund or replacement. For full details of the Abpromise, please visit <https://www.abcam.co.jp/abpromise> or contact our technical team.

Terms and conditions

- Guarantee only valid for products bought direct from Abcam or one of our authorized distributors