

# Anti-UBE2E3 antibody [OT4B4] ab128098

**1 References** [画像数 7](#)

### 製品の概要

|          |  |
|----------|--|
| 製品名      | Anti-UBE2E3 antibody [OT4B4]   |
| 製品の詳細    | Mouse monoclonal [OT4B4] to UBE2E3   |
| 由来種      | Mouse  |
| アプリケーション | <b>適用あり:</b> WB, IHC-P, ICC/IF, Flow Cyt (Intra)   |
| 種交差性     | <b>交差種:</b> Human  |
| 免疫原      | Recombinant full length protein corresponding to Human UBE2E3 aa 1-207. (NP_006348) produced in E.coli.<br>Sequence:<br>MSSDRQRSDDSPSTSSGSSDADQRDPAAPEPEEQEERKPSA<br>TQQKNTK<br>LSSKTTAKLSTSAKRIQKELAEITLDPNCSAGPKGDNIYE<br>WRSTILGP<br>PGSVYEGGVFFLDITFSSDYPFKPPKVTFRTRIYHCNINSQG<br>VICLDILK<br>DNWSPALTISKVLLSICLLTDCNPADPLVGSIAATQYLTNRA<br>EHDRIARQ WTKRYAT |

Database link: [Q969T4](#)

 [Run BLAST with](#)

 [Run BLAST with](#)

**ポジティブ・コントロール** WB: HepG2 extracts; HEK-293T cells transiently transfected with the UBE2E3 cDNA. IHC-P: Human endometrium adenocarcinoma tissue. ICC/IF: HepG2 cells. Flow Cyt (Intra): HeLa and Jurkat cells; HEK-293T cells transfected with UBE2E3 overexpressing plasmid.

**特記事項** Clone OT4B4 (formerly 4B4).

The Life Science industry has been in the grips of a reproducibility crisis for a number of years. Abcam is leading the way in addressing this with our range of recombinant monoclonal antibodies and knockout edited cell lines for gold-standard validation. Please check that this product meets your needs before purchasing.

If you have any questions, special requirements or concerns, please send us an inquiry and/or contact our Support team ahead of purchase. Recommended alternatives for this product can be found below, along with publications, customer reviews and Q&As

### 製品の特性

|          |   |
|----------|---|
| 製品の状態    | Liquid  |
| 保存方法     | Shipped at 4°C. Store at +4°C short term (1-2 weeks). Upon delivery aliquot. Store at -20°C. Avoid freeze / thaw cycle. |
| バッファー    | pH: 7.30<br>Preservative: 0.02% Sodium azide<br>Constituents: PBS, 1% BSA, 50% Glycerol                                 |
| 精製度      | Affinity purified   |
| 特記事項(精製) | Purified from cell culture supernatant by affinity chromatography.  |
| ポリ/モノ    | モノクローナル   |
| クローン名    | OT4B4   |
| アイソタイプ   | IgG1  |

## アプリケーション

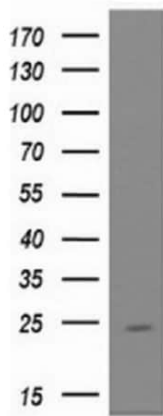
The Abpromise guarantee **Abpromise保証は、次のテスト済みアプリケーションにおけるab128098の使用に適用されず**  
アプリケーションノートには、推奨の開始希釈率がありますが、適切な希釈率につきましてはご検討ください。

| アプリケーション         | Abreviews | 特記事項   |
|------------------|-----------|--|
| WB               |           | 1/2000. Predicted molecular weight: 22 kDa.  |
| IHC-P            |           | 1/150. Perform heat mediated antigen retrieval before commencing with IHC staining protocol.                     |
| ICC/IF           |           | 1/100.   |
| Flow Cyt (Intra) |           | 1/100.<br><b>ab170190</b> - Mouse monoclonal IgG1, is suitable for use as an isotype control with this antibody. |

## ターゲット情報

|       |   |
|-------|---|
| 機能    | Accepts ubiquitin from the E1 complex and catalyzes its covalent attachment to other proteins. In vitro catalyzes 'Lys-11'- and 'Lys-48'-, as well as 'Lys-63'-linked polyubiquitination. Participates in the regulation of transepithelial sodium transport in renal cells. May be involved in cell growth arrest. |
| 組織特異性 | Ubiquitously expressed at low levels. Highly expressed in skeletal muscle.  |
| パスウェイ | Protein modification; protein ubiquitination.   |
| 配列類似性 | Belongs to the ubiquitin-conjugating enzyme family.   |
| 細胞内局在 | Nucleus. Cytoplasm. Shuttles between the nucleus and cytoplasm in a IPO11-dependent manner.   |

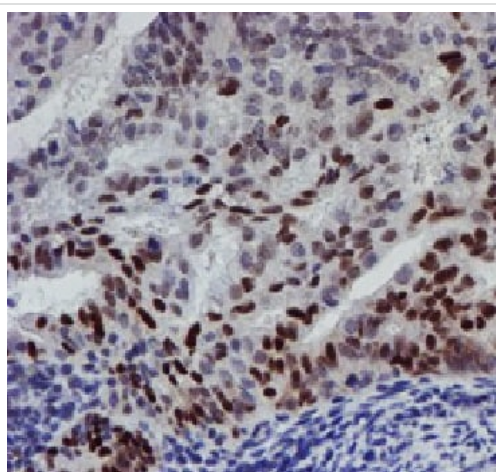
## 画像



Western blot - Anti-UBE2E3 antibody [OT14B4]  
(ab128098)

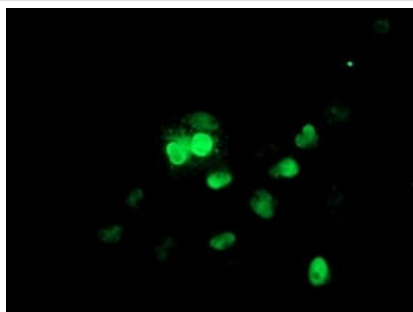
Anti-UBE2E3 antibody [OT14B4] (ab128098) at 1/200 dilution +  
HepG2 (Human liver hepatocellular carcinoma cell line) extracts at  
10  $\mu$ g

**Predicted band size:** 22 kDa



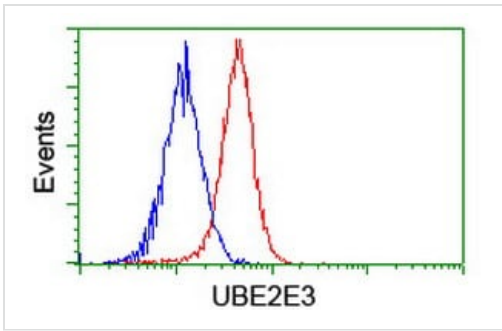
Immunohistochemistry (Formalin/PFA-fixed paraffin-  
embedded sections) - Anti-UBE2E3 antibody  
[OT14B4] (ab128098)

Paraffin-embedded human endometrium adenocarcinoma tissue  
stained for UBE2E3 with ab128098 at a 1/150 dilution in  
immunohistochemical analysis. Heat-induced epitope retrieval by  
10 mM citric buffer, pH 6.0, 100°C for 10 minutes.



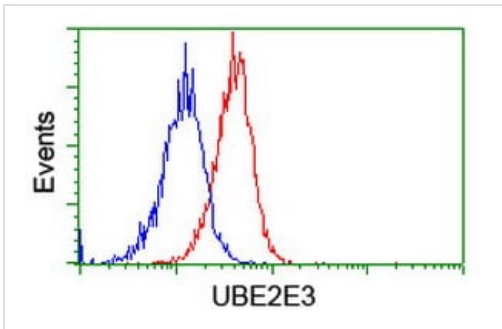
Immunocytochemistry/ Immunofluorescence - Anti-  
UBE2E3 antibody [OT14B4] (ab128098)

HepG2 (human liver hepatocellular carcinoma cell line) cells stained  
for UBE2E3 using ab128098 at a 1/100 dilution in ICC/IF.



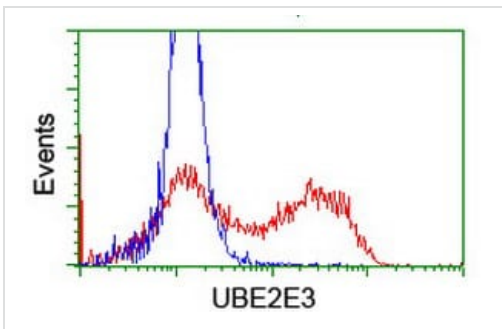
Flow cytometry (Intracellular) analysis of HeLa (Human epithelial cell line from cervix adenocarcinoma) cells, using anti-UBE2E3 antibody (ab128098) in Red at 1/100 dilution, compared to a nonspecific negative control antibody in Blue.

Flow Cytometry (Intracellular) - Anti-UBE2E3 antibody [OT14B4] (ab128098)



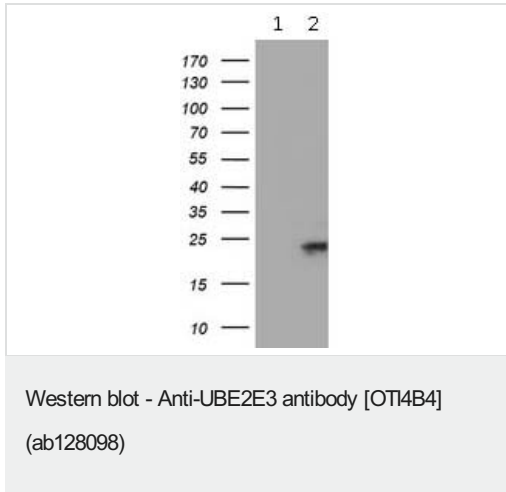
Flow cytometry analysis (Intracellular) of Jurkat (Human T cell leukemia cell line from peripheral blood) cells, using anti-UBE2E3 antibody (ab128098) in Red at 1/100 dilution, compared to a nonspecific negative control antibody in Blue.

Flow Cytometry (Intracellular) - Anti-UBE2E3 antibody [OT14B4] (ab128098)



Flow cytometry analysis (Intracellular) of HEK-293T (Human epithelial cell line from embryonic kidney transformed with large T antigen) cells transfected with either UBE2E3 overexpressing plasmid (Red) or empty vector control plasmid (Blue) and immunostained by anti-UBE2E3 antibody (ab128098) at 1/100 dilution.

Flow Cytometry (Intracellular) - Anti-UBE2E3 antibody [OT14B4] (ab128098)



**All lanes :** Anti-UBE2E3 antibody [OTI4B4] (ab128098) at 1/2000 dilution

**Lane 1 :** HEK-293T (Human epithelial cell line from embryonic kidney transformed with large T antigen) cells were transfected with pCMV6-ENTRY control cDNA

**Lane 2 :** HEK-293T cells were transfected with pCMV6-ENTRY UBE2E3 cDNA

Lysates/proteins at 5 µg per lane.

**Predicted band size:** 22 kDa

**Please note:** All products are "FOR RESEARCH USE ONLY. NOT FOR USE IN DIAGNOSTIC PROCEDURES"

### Our Abpromise to you: Quality guaranteed and expert technical support

- Replacement or refund for products not performing as stated on the datasheet
- Valid for 12 months from date of delivery
- Response to your inquiry within 24 hours
- We provide support in Chinese, English, French, German, Japanese and Spanish
- Extensive multi-media technical resources to help you
- We investigate all quality concerns to ensure our products perform to the highest standards

If the product does not perform as described on this datasheet, we will offer a refund or replacement. For full details of the Abpromise, please visit <https://www.abcam.co.jp/abpromise> or contact our technical team.

### Terms and conditions

- Guarantee only valid for products bought direct from Abcam or one of our authorized distributors