


Anti-TUG antibody [EPR8615] ab131237

KO 評価済 リコンビナント RabMAb

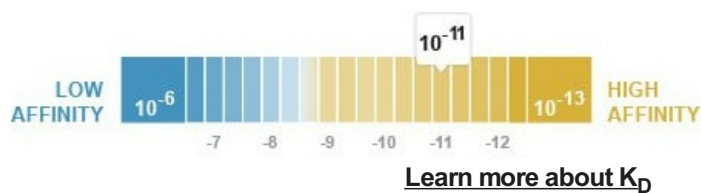
1 Abreviews 画像数 5

製品の概要

製品名	Anti-TUG antibody [EPR8615]
製品の詳細	Rabbit monoclonal [EPR8615] to TUG
由来種	Rabbit
アプリケーション	適用あり: WB, IHC-P 適用なし: Flow Cyt or ICC/IF
種交差性	交差種: Mouse, Human 交差が予測される動物種: Rat 
免疫原	Synthetic peptide. This information is proprietary to Abcam and/or its suppliers.
ポジティブ・コントロール	K562, 293T, and SW480 cell lysates for Western Blot and Human colon tissue for IHC-P.
特記事項	<p>This product is a recombinant monoclonal antibody, which offers several advantages including:</p> <ul style="list-style-type: none"> - High batch-to-batch consistency and reproducibility - Improved sensitivity and specificity - Long-term security of supply - Animal-free production <p>For more information see here.</p> <p>Our RabMAb[®] technology is a patented hybridoma-based technology for making rabbit monoclonal antibodies. For details on our patents, please refer to RabMAb[®] patents.</p>

製品の特性

製品の状態	Liquid
保存方法	Shipped at 4°C. Store at -20°C.
解離定数 (K _D 値)	K _D = 2.77 x 10 ⁻¹¹ M



バッファー	pH: 7.20
-------	----------

	Preservative: 0.01% Sodium azide
	Constituents: 9% PBS, 40% Glycerol (glycerin, glycerine), 0.05% BSA, 50% Tissue culture supernatant
精製度	Protein A purified
ポリ/モノ	モノクローナル
クローン名	EPR8615
アイソタイプ	IgG

アプリケーション

The Abpromise guarantee Abpromise保証は、 次のテスト済みアプリケーションにおけるab131237の使用に適用されます
アプリケーションノートには、推奨の開始希釈率がありますが、適切な希釈率につきましてはご検討ください。

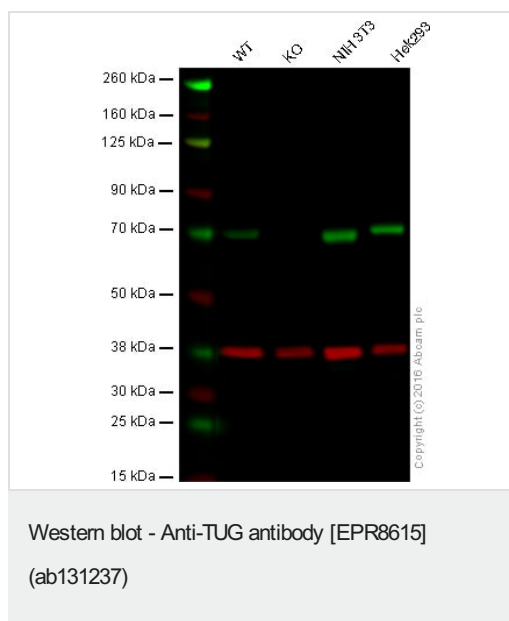
アプリケーション	Abreviews	特記事項
WB		1/10000 - 1/50000. Predicted molecular weight: 60 kDa.
IHC-P		1/100 - 1/250. Perform heat mediated antigen retrieval with citrate buffer pH 6 before commencing with IHC staining protocol.

追加情報 Is unsuitable for Flow Cyt or ICC/IF.

ターゲット情報

機能	Tethering protein that sequesters GLUT4-containing vesicles in the cytoplasm in the absence of insulin. Modulates the amount of GLUT4 that is available at the cell surface.
組織特異性	Ubiquitous. Highly expressed in testis, heart, skeletal muscle and pancreas.
関連疾患	Note=A chromosomal aberration involving ASPSCR1 is found in patients with alveolar soft part sarcoma. Translocation t(X;17)(p11;q25) with TFE3 forms a ASPSCR1-TFE3 fusion protein. Note=A chromosomal aberration involving ASPSCR1 has been found in two patients with of papillary renal cell carcinoma. Translocation t(X;17)(p11.2;q25).
配列類似性	Contains 1 UBX domain.
細胞内局在	Endomembrane system.

画像



Lane 1: Wild-type HAP1 cell lysate (20 µg)

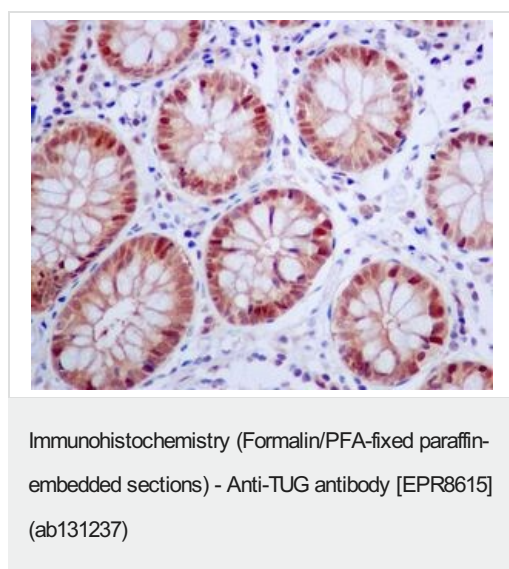
Lane 2: TUG knockout HAP1 cell lysate (20 µg)

Lane 3: NIH/3T3 cell lysate (20 µg)

Lane 4: HEK293 cell lysate (20 µg)

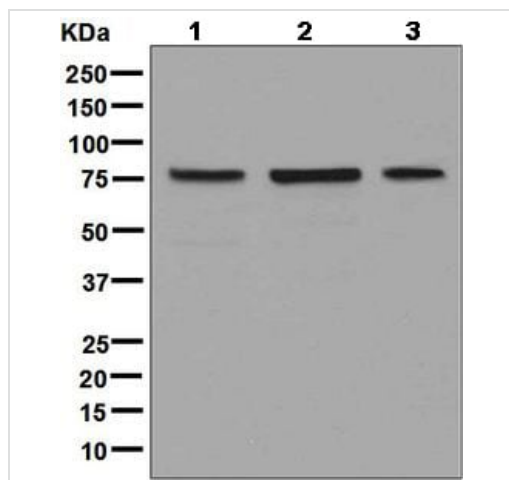
Lanes 1 - 4: Merged signal (red and green). Green - ab131237 observed at 70 kDa. Red - loading control, [ab8245](#), observed at 37 kDa.

ab131237 was shown to specifically react with TUG when TUG knockout samples were used. Wild-type and TUG knockout samples were subjected to SDS-PAGE. ab131237 and [ab8245](#) (loading control to GAPDH) were both diluted 1/10 000 and incubated overnight at 4°C. Blots were developed with Goat anti-Rabbit IgG H&L (IRDye® 800CW) preadsorbed [ab216773](#) and Goat anti-Mouse IgG H&L (IRDye® 680RD) preadsorbed [ab216776](#) secondary antibodies at 1/10000 dilution for 1 hour at room temperature before imaging.



ab131237, at 1/100, staining TUG in Formalin-fixed, Paraffin-embedded Human colon tissue by Immunohistochemistry.

Perform heat mediated antigen retrieval with citrate buffer pH 6 before commencing with IHC staining protocol.



Western blot - Anti-TUG antibody [EPR8615]
(ab131237)

All lanes : Anti-TUG antibody [EPR8615] (ab131237) at 1/10000 dilution

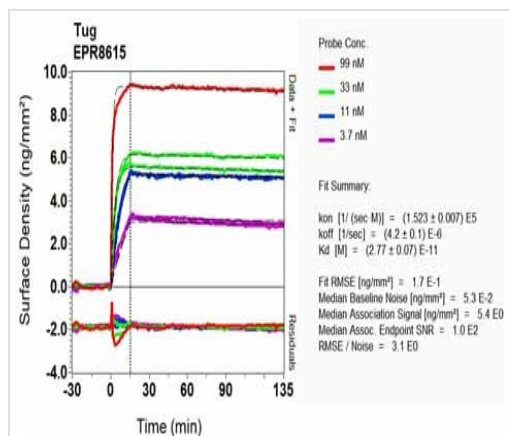
Lane 1 : K562 cell lysate

Lane 2 : 293T cell lysate

Lane 3 : SW480 cell lysate

Lysates/proteins at 10 µg per lane.

Predicted band size: 60 kDa



OI-RD Scanning - Anti-TUG antibody [EPR8615]
(ab131237)

Equilibrium dissociation constant (K_D)

Learn more about K_D

[Click here to learn more about \$K_D\$](#)

Why choose a recombinant antibody?



Research with confidence
Consistent and reproducible results



Long-term and scalable supply
Recombinant technology



Success from the first experiment
Confirmed specificity



Ethical standards compliant
Animal-free production

Anti-TUG antibody [EPR8615] (ab131237)

Please note: All products are "FOR RESEARCH USE ONLY. NOT FOR USE IN DIAGNOSTIC PROCEDURES"

Our Abpromise to you: Quality guaranteed and expert technical support

- Replacement or refund for products not performing as stated on the datasheet
- Valid for 12 months from date of delivery
- Response to your inquiry within 24 hours
- We provide support in Chinese, English, French, German, Japanese and Spanish
- Extensive multi-media technical resources to help you
- We investigate all quality concerns to ensure our products perform to the highest standards

If the product does not perform as described on this datasheet, we will offer a refund or replacement. For full details of the Abpromise, please visit <https://www.abcam.co.jp/abpromise> or contact our technical team.

Terms and conditions

- Guarantee only valid for products bought direct from Abcam or one of our authorized distributors