


Anti-Tubulin antibody [YOL1/34] - Microtubule Marker ab6161

★★★★★ **21 Abreviews** **145 References** 画像数 10

製品の概要

製品名	Anti-Tubulin antibody [YOL1/34] - Microtubule Marker
製品の詳細	Rat monoclonal [YOL1/34] to Tubulin - Microtubule Marker
由来種	Rat
アプリケーション	適用あり: WB, ICC/IF, Flow Cyt (Intra)
種交差性	<p>交差種: Mouse, Rat, Human</p> <p>交差が予測される動物種: Dog, Saccharomyces cerevisiae, Plants, Schizosaccharomyces pombe, a wide range of other species, Mammals, Alligator </p>
免疫原	Full length native protein (purified) corresponding to Saccharomyces cerevisiae Tubulin.
エピトープ	ab6161 binds to an epitope between amino acids 414 and 422 of alpha tubulin.
ポジティブ・コントロール	WB: HeLa and NIH3T3 whole cell lysates and rat brain tissue lysate. Flow Cyt (Intra): methanol fixed/tween permeabilised HeLa cells. ICC/IF: HeLa, NIH/3T3 and human macrophage cells.
特記事項	<p>We can conjugate this antibody to FITC for you (please see ab150252 for details). This antibody can be used as a Western blotting loading control (Kops et al.) and as a Microtubule Marker.</p> <p>Has been used for the selection of specific recombinant antibodies engineered to incorporate its epitope. It is also useful for studying the function of microtubules.</p> <p>This antibody clone is manufactured by Abcam. If you require a custom buffer formulation or conjugation for your experiments, please contact orders@abcam.com.</p> <p>The Life Science industry has been in the grips of a reproducibility crisis for a number of years. Abcam is leading the way in addressing this with our range of recombinant monoclonal antibodies and knockout edited cell lines for gold-standard validation. Please check that this product meets your needs before purchasing.</p> <p>If you have any questions, special requirements or concerns, please send us an inquiry and/or contact our Support team ahead of purchase. Recommended alternatives for this product can be found below, along with publications, customer reviews and Q&As</p>

製品の特性

製品の状態	Liquid
保存方法	Shipped at 4°C. Store at +4°C short term (1-2 weeks). Upon delivery aliquot. Store at -20°C or -80°C. Avoid freeze / thaw cycle.

バッファー	pH: 7.40 Preservative: 0.02% Sodium azide Constituents: PBS, 6.97% L-Arginine
精製度	Protein G purified
一次抗体 備考	Has been used for the selection of specific recombinant antibodies engineered to incorporate its epitope. It is also useful for studying the function of microtubules.
ポリ/モノ	モノクローナル
クローン名	YOL 1/34
アイソタイプ	IgG2a

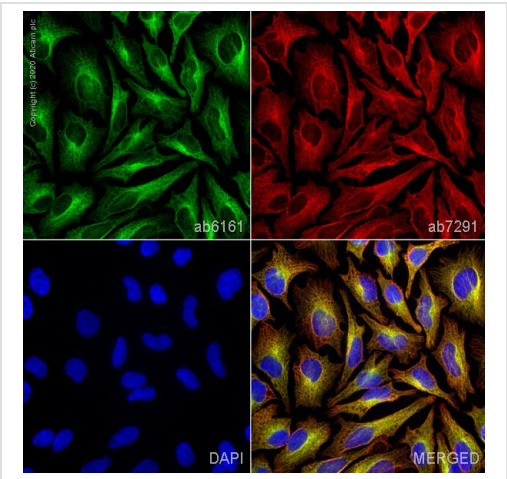
アプリケーション

The Abpromise guarantee **Abpromise保証は、** 次のテスト済みアプリケーションにおけるab6161の使用に適用されます
アプリケーションノートには、推奨の開始希釈率がありますが、適切な希釈率につきましてはご検討ください。

アプリケーション	Abreviews	特記事項
WB	★★★★★ (10)	Use a concentration of 1 µg/ml.
ICC/IF	★★★★★ (11)	Use a concentration of 5 µg/ml.
Flow Cyt (Intra)		Use 1µg for 10 ⁶ cells. ab18450 - Rat monoclonal IgG2a, is suitable for use as an isotype control with this antibody.

ターゲット情報

機能	Tubulin is the major constituent of microtubules. It binds two moles of GTP, one at an exchangeable site on the beta chain and one at a non-exchangeable site on the alpha-chain.
配列類似性	Belongs to the tubulin family.
翻訳後修飾	Undergoes a tyrosination/detyrosination cycle, the cyclic removal and re-addition of a C-terminal tyrosine residue by the enzymes tubulin tyrosine carboxypeptidase (TTCP) and tubulin tyrosine ligase (TTL), respectively. Some glutamate residues at the C-terminus are polyglutamylated. This modification occurs exclusively on glutamate residues and results in polyglutamate chains on the gamma-carboxyl group. Also monoglycylated but not polyglycylated due to the absence of functional TTL10 in human. Monoglycylation is mainly limited to tubulin incorporated into axonemes (cilia and flagella) whereas glutamylation is prevalent in neuronal cells, centrioles, axonemes, and the mitotic spindle. Both modifications can coexist on the same protein on adjacent residues, and lowering glycylation levels increases polyglutamylation, and reciprocally. The precise function of such modifications is still unclear but they regulate the assembly and dynamics of axonemal microtubules. Acetylation of alpha-tubulins at Lys-40 stabilizes microtubules and affects affinity and processivity of microtubule motors. This modification has a role in multiple cellular functions, ranging from cell motility, cell cycle progression or cell differentiation to intracellular trafficking and signaling.
細胞内局在	Cytoplasm > cytoskeleton.



Immunocytochemistry/ Immunofluorescence - Anti-Tubulin antibody [YOL1/34] - Microtubule Marker (ab6161)



Western blot - Anti-Tubulin antibody [YOL1/34] - Microtubule Marker (ab6161)

ab6161 staining Tubulin in HeLa cells. The cells were fixed with 4% paraformaldehyde (10 min), permeabilized with 0.1% PBS-Triton X-100 for 5 minutes and then blocked with 1% BSA/10% normal goat serum/0.3M glycine in 0.1%PBS-Tween for 1h. The cells were then incubated overnight at 4°C with ab6161 at 5µg/ml and [ab7291](#), Mouse monoclonal [DM1A] to alpha Tubulin - Loading Control. Cells were then incubated with [ab150165](#), Goat polyclonal Secondary Antibody to Rat IgG - H&L (Alexa Fluor® 488), pre-adsorbed at 1/1000 dilution (shown in green) and [ab150120](#), Goat polyclonal Secondary Antibody to Mouse IgG - H&L (Alexa Fluor® 594), pre-adsorbed at 1/1000 dilution (shown in pseudocolour red). Nuclear DNA was labelled with DAPI (shown in blue).

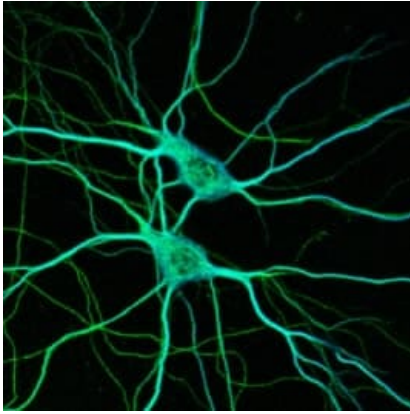
Image was acquired with a high-content analyser (Operetta CLS, Perkin Elmer) and a maximum intensity projection of confocal sections is shown.

Western blot against tubulin with ab6161 at 1/3000. Secondary Rabbit anti-Rat IgG HRP ([ab6734](#))was used at 1/2000. Exposure time: 2mins.

Lane 1: 20µg/lane HeLa (Human) whole cell lysates ([ab7898](#)).

Lane 2: 20µg/lane 3T3 (Mouse) whole cell lysate ([ab7901](#)).

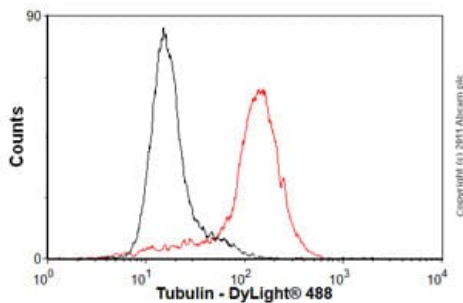
Lane 3: 20µg/lane Rat brain tissue lysate ([ab7942](#)).



Immunocytochemistry/ Immunofluorescence - Anti-Tubulin antibody [YOL1/34] - Microtubule Marker (ab6161)

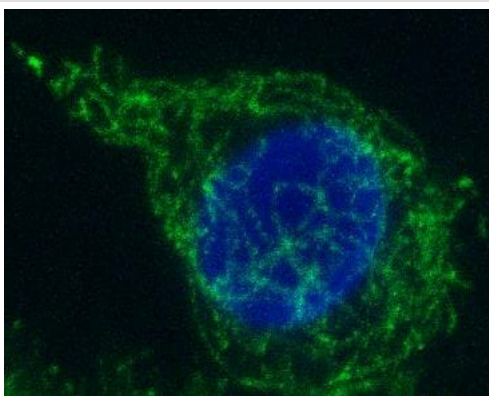
Confocal image of 21 day in vitro rat hippocampal neurons, stained with rat monoclonal antibody to Tubulin - Microtubule Marker (ab6161) in green at 1/500 and Microtubule Associated protein 2 in blue.

This picture was kindly supplied as part of the review submitted by Dr Jonathon Burman.



Flow Cytometry (Intracellular) - Anti-Tubulin antibody [YOL1/34] - Microtubule Marker (ab6161)

Overlay histogram showing HeLa cells stained with ab6161 (red line). The cells were fixed with 80% methanol (5 min) and then permeabilized with 0.1% PBS-Tween for 20 min. The cells were then incubated in 1x PBS / 10% normal goat serum / 0.3M glycine to block non-specific protein-protein interactions followed by the antibody (ab6161, 1µg/1x10⁶ cells) for 30 min at 22°C. The secondary antibody used was DyLight® 488 goat anti-rat IgG (H+L) ([ab98386](#)) at 1/500 dilution for 30 min at 22°C. Isotype control antibody (black line) was rat IgG2a [aRTK2758] ([ab18450](#), 1µg/1x10⁶ cells) used under the same conditions. Acquisition of >5,000 events was performed.

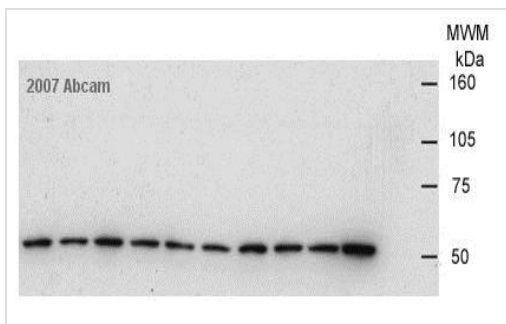


Immunocytochemistry/ Immunofluorescence - Anti-Tubulin antibody [YOL1/34] - Microtubule Marker (ab6161)

Cultured human macrophages were used with ab6161 at 1/1000 for immunofluorescence. Cells were fixed with cold 2% formaldehyde for 20mins.

Green staining is Alexa 568, Blue staining is DAPI stain.

This cell represents a young macrophage, the staining patterns varied as the cells aged in culture.



Western blot - Anti-Tubulin antibody [YOL1/34] - Microtubule Marker (ab6161)

This image is courtesy of an anonymous Abreview

All lanes : Anti-Tubulin antibody [YOL1/34] - Microtubule Marker (ab6161) at 1/2000 dilution

All lanes : Yeast (*Saccharomyces cerevisiae*) whole cell extract prepared by bead-beating

Lysates/proteins at 5 µg per lane.

Secondary

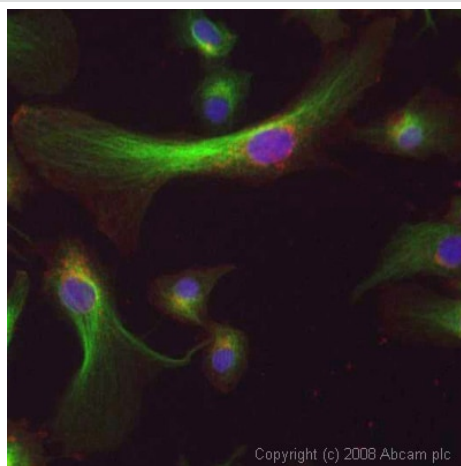
All lanes : HRP conjugated goat anti-rat antibody

Developed using the ECL technique.

Performed under reducing conditions.

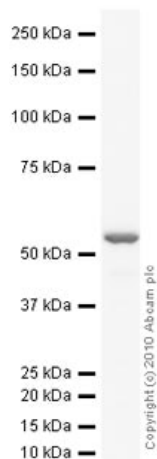
Observed band size: 50 kDa

Exposure time: 30 seconds



Immunocytochemistry/ Immunofluorescence - Anti-Tubulin antibody [YOL1/34] - Microtubule Marker (ab6161)

ICC/IF image of ab6161 stained human HepG2 cells. The cells were 4% PFA fixed (10 min), permeabilised in 0.1% PBS-Tween (20 min) and incubated with the antibody (ab6161, 1 µg/ml) for 1h at room temperature. 1%BSA / 10% normal goat serum / 0.3M glycine was used to block non-specific protein-protein interactions. The secondary antibody (green) was Alexa Fluor[®] 488 goat anti-rat IgG (H+L) used at a 1/1000 dilution for 1h. Alexa Fluor[®] 594 WGA was used to label plasma membranes (red). DAPI was used to stain the cell nuclei (blue). This antibody also gave a positive IF result in HeLa, HEK 293 and MCF7 cells.



Western blot - Anti-Tubulin antibody [YOL1/34] - Microtubule Marker (ab6161)

Anti-Tubulin antibody [YOL1/34] - Microtubule Marker (ab6161) at 1 μ g/ml + Brain (Rat) Tissue Lysate at 10 μ g

Secondary

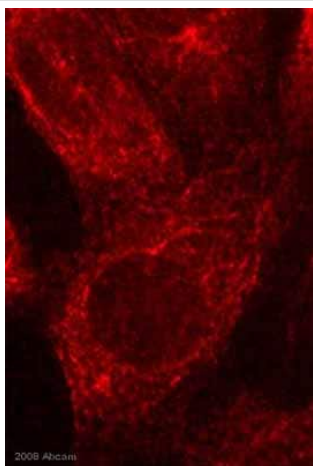
Rabbit polyclonal to Rat IgG - H&L (HRP) at 1/10000 dilution

Developed using the ECL technique.

Performed under reducing conditions.

Observed band size: 54 kDa

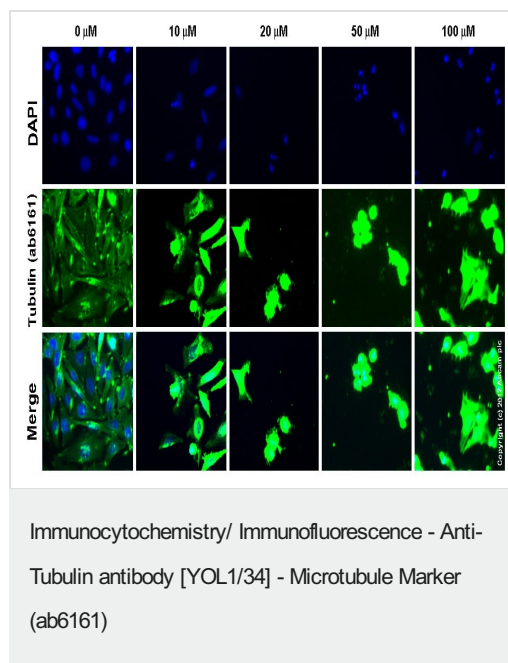
Exposure time: 3 minutes



Immunocytochemistry/ Immunofluorescence - Anti-Tubulin antibody [YOL1/34] - Microtubule Marker (ab6161)

This image is courtesy of an anonymous Abreview

ab6161 staining mouse NIH 3T3 fibroblast cells by ICC/IF. Cells were PFA fixed and permeabilized in 0.2% Triton X-100 prior to blocking in 5% BSA for 45 minutes at RT. The primary antibody was diluted 1/1000 and incubated with the sample for 1 hour. An Alexa Fluor® 568 conjugated goat anti-rat antibody, diluted 1/3000, was used as the secondary.



ab6161 staining tubulin HeLa cells treated with anisomycin (**ab120495**), by ICC/IF. Increase in tubulin expression correlates with increased concentration of anisomycin as described in literature.

The cells were incubated at 37°C for 6h in media containing different concentrations of **ab120495** (anisomycin) in DMSO, fixed with 4% formaldehyde for 10 minutes at room temperature and blocked with PBS containing 10% goat serum, 0.3 M glycine, 1% BSA and 0.1% tween for 2h at room temperature. Staining of the treated cells with ab6161 (5 µg/ml) was performed overnight at 4°C in PBS containing 1% BSA and 0.1% tween. A DyLight 488 goat anti-rat polyclonal antibody (**ab98386**) at 1/250 dilution was used as the secondary antibody. Nuclei were counterstained with DAPI and are shown in blue.

Please note: All products are "FOR RESEARCH USE ONLY. NOT FOR USE IN DIAGNOSTIC PROCEDURES"

Our Abpromise to you: Quality guaranteed and expert technical support

- Replacement or refund for products not performing as stated on the datasheet
- Valid for 12 months from date of delivery
- Response to your inquiry within 24 hours
- We provide support in Chinese, English, French, German, Japanese and Spanish
- Extensive multi-media technical resources to help you
- We investigate all quality concerns to ensure our products perform to the highest standards

If the product does not perform as described on this datasheet, we will offer a refund or replacement. For full details of the Abpromise, please visit <https://www.abcam.co.jp/abpromise> or contact our technical team.

Terms and conditions

- Guarantee only valid for products bought direct from Abcam or one of our authorized distributors