


Anti-TTL4 antibody ab155801

1 References 画像数 1

医薬用外劇物

製品の概要

製品名	Anti-TTL4 antibody
製品の詳細	Rabbit polyclonal to TTL4
由来種	Rabbit
アプリケーション	適用あり: WB
種交差性	交差種: Human 交差が予測される動物種: Mouse, Cow 
免疫原	Recombinant fragment, corresponding to a region within internal sequence amino acids 567-798 of Human TTL4 (Uniprot ID Q14679)
ポジティブ・コントロール	NT2D1, PC3 whole cell lysates
特記事項	<p>The Life Science industry has been in the grips of a reproducibility crisis for a number of years. Abcam is leading the way in addressing this with our range of recombinant monoclonal antibodies and knockout edited cell lines for gold-standard validation. Please check that this product meets your needs before purchasing.</p> <p>If you have any questions, special requirements or concerns, please send us an inquiry and/or contact our Support team ahead of purchase. Recommended alternatives for this product can be found below, along with publications, customer reviews and Q&As</p>

製品の特性

製品の状態	Liquid
保存方法	Shipped at 4°C. Upon delivery aliquot. Store at -20°C or -80°C. Avoid freeze / thaw cycle.
バッファー	pH: 7.00 Preservative: 0.01% Thimerosal (merthiolate) Constituents: 78.99% PBS, 1% BSA, 20% Glycerol (glycerin, glycerine)
精製度	Immunogen affinity purified
ポリ/モノ	ポリクローナル
アイソタイプ	IgG

アプリケーション

The Abpromise guarantee

Abpromise保証は、次のテスト済みアプリケーションにおけるab155801の使用に適用されます

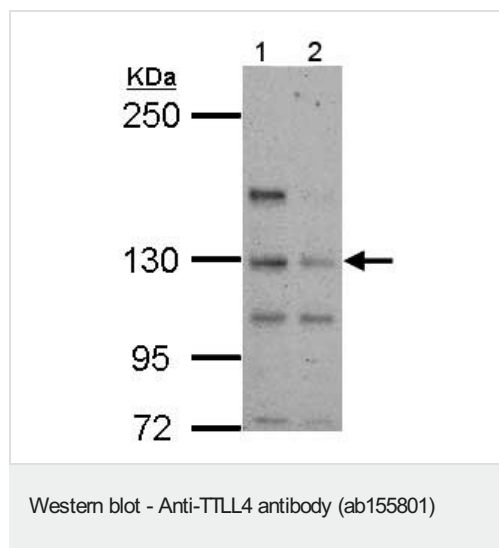
アプリケーションノートには、推奨の開始希釈率がありますが、適切な希釈率につきましてはご確認ください。

アプリケーション	Abreviews	特記事項
WB		1/500 - 1/3000. Predicted molecular weight: 113 kDa.

ターゲット情報

機能	Polyglutamylase which preferentially modifies beta-tubulin and nucleosome assembly proteins NAP1 and NAP2. Involved in the side-chain initiation step of the polyglutamylation reaction rather than in the elongation step.
配列類似性	Belongs to the tubulin-tyrosine ligase family. Contains 1 TTL domain.
細胞内局在	Cell projection > cilium. Cytoplasm > cytoskeleton > cilium basal body. Located in cilia. In some cells, also found in basal bodies.

画像



All lanes : Anti-TTL4 antibody (ab155801) at 1/500 dilution

Lane 1 : NT2D1 whole cell lysate

Lane 2 : PC3 whole cell lysate

Lysates/proteins at 30 µg per lane.

Predicted band size: 113 kDa

5% SDS PAGE

Please note: All products are "FOR RESEARCH USE ONLY. NOT FOR USE IN DIAGNOSTIC PROCEDURES"

Our Abpromise to you: Quality guaranteed and expert technical support

- Replacement or refund for products not performing as stated on the datasheet
- Valid for 12 months from date of delivery
- Response to your inquiry within 24 hours
- We provide support in Chinese, English, French, German, Japanese and Spanish
- Extensive multi-media technical resources to help you
- We investigate all quality concerns to ensure our products perform to the highest standards

If the product does not perform as described on this datasheet, we will offer a refund or replacement. For full details of the Abpromise, please visit <https://www.abcam.co.jp/abpromise> or contact our technical team.

Terms and conditions

- Guarantee only valid for products bought direct from Abcam or one of our authorized distributors