

Anti-Trophoblast specific protein alpha antibody ab104401

★★★★★ [2 Abreviews](#) [25 References](#) [画像数 2](#)

製品の概要

製品名	Anti-Trophoblast specific protein alpha antibody
製品の詳細	Rabbit polyclonal to Trophoblast specific protein alpha
由来種	Rabbit
特異性	From Jan 2024, QC testing of replenishment batches of this polyclonal changed. All tested and expected application and reactive species combinations are still covered by our Abcam product promise. However, we no longer test all applications. For more information on a specific batch, please contact our Scientific Support who will be happy to help.
アプリケーション	適用あり: ICC/IF, WB
種交差性	交差種: Mouse
免疫原	Synthetic peptide corresponding to Mouse Trophoblast specific protein alpha aa 1-100 conjugated to keyhole limpet haemocyanin. (Peptide available as ab117405)
ポジティブ・コントロール	This antibody gave a positive signal in Mouse trophoblast tissue lysate as well as the following whole cell lysates: MEF1; NIH3T3; STO.
特記事項	<p>The Life Science industry has been in the grips of a reproducibility crisis for a number of years. Abcam is leading the way in addressing this with our range of recombinant monoclonal antibodies and knockout edited cell lines for gold-standard validation. Please check that this product meets your needs before purchasing.</p> <p>If you have any questions, special requirements or concerns, please send us an inquiry and/or contact our Support team ahead of purchase. Recommended alternatives for this product can be found below, along with publications, customer reviews and Q&As</p>

製品の特性

製品の状態	Liquid
保存方法	Shipped at 4°C. Store at +4°C short term (1-2 weeks). Upon delivery aliquot. Store at -20°C or -80°C. Avoid freeze / thaw cycle.
バッファー	<p>pH: 7.40</p> <p>Preservative: 0.02% Sodium azide</p> <p>Constituent: PBS</p>

Batches of this product that have a concentration < 1mg/ml may have BSA added as a stabilising

agent. If you would like information about the formulation of a specific lot, please contact our scientific support team who will be happy to help.

精製度	Immunogen affinity purified
ポリ/モノ	ポリクローナル
アイソタイプ	IgG

アプリケーション

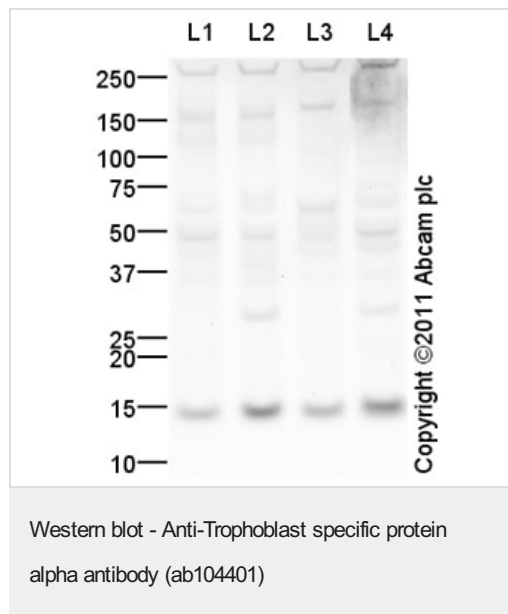
The Abpromise guarantee Abpromise保証は、次のテスト済みアプリケーションにおけるab104401の使用に適用されます
アプリケーションノートには、推奨の開始希釈率がありますが、適切な希釈率につきましてはご検討ください。

アプリケーション	Abreviews	特記事項
ICC/IF	★★★★★ (1)	Use a concentration of 1 µg/ml.
WB		Use at an assay dependent concentration. Predicted molecular weight: 14 kDa.

ターゲット情報

関連性 Trophoblast specific protein alpha is a marker of spongiotrophoblasts.

画像



All lanes : Anti-Trophoblast specific protein alpha antibody (ab104401) at 1 µg/ml

Lane 1 : MEF1 (Mouse embryonic fibroblast cell line) Whole Cell Lysate

Lane 2 : NIH 3T3 (Mouse embryonic fibroblast cell line) Whole Cell Lysate

Lane 3 : Trophoblast Stem Cells (Mouse) Whole Cell Lysate

Lane 4 : STO (Mouse embryonic fibroblast cell line) Whole Cell Lysate

Lysates/proteins at 10 µg per lane.

Secondary

All lanes : Goat Anti-Rabbit IgG H&L (HRP) preadsorbed (ab97080) at 1/5000 dilution

Developed using the ECL technique.

