

Anti-TRIP12/ULF antibody ab86220

5 References [画像数 2](#)

製品の概要

製品名	Anti-TRIP12/ULF antibody
製品の詳細	Rabbit polyclonal to TRIP12/ULF
由来種	Rabbit
アプリケーション	適用あり: WB, IP
種交差性	交差種: Human 交差が予測される動物種: Guinea pig, Dog, Pig, Chimpanzee, Rhesus monkey, Gorilla, Orangutan, Camel, Elephant 
免疫原	Synthetic peptide corresponding to Human TRIP12/ULF. Database link: NP_004229.1
ポジティブ・コントロール	HeLa whole cell lysate (ab150035)
特記事項	<p>The Life Science industry has been in the grips of a reproducibility crisis for a number of years. Abcam is leading the way in addressing this with our range of recombinant monoclonal antibodies and knockout edited cell lines for gold-standard validation. Please check that this product meets your needs before purchasing.</p> <p>If you have any questions, special requirements or concerns, please send us an inquiry and/or contact our Support team ahead of purchase. Recommended alternatives for this product can be found below, along with publications, customer reviews and Q&As</p>

製品の特性

製品の状態	Liquid
保存方法	Shipped at 4°C. Upon delivery aliquot and store at -20°C. Avoid freeze / thaw cycles.
バッファー	pH: 6.8 Preservative: 0.09% Sodium azide Constituents: 0.1% BSA, Tris buffered saline
精製度	Immunogen affinity purified
ポリ/モノ	ポリクローナル
アイソタイプ	IgG

アプリケーション

The Abpromise guarantee

Abpromise保証は、次のテスト済みアプリケーションにおけるab86220の使用に適用されます
アプリケーションノートには、推奨の開始希釈率がありますが、適切な希釈率につきましてはご検討ください。

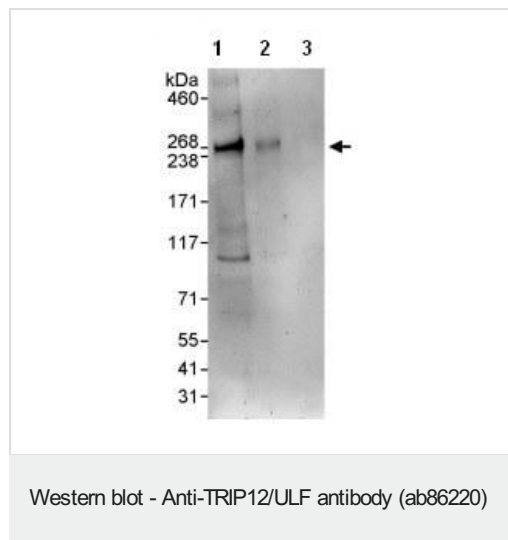
アプリケーション	Abreviews	特記事項
WB		1/2000 - 1/10000. Predicted molecular weight: 220 kDa.
IP		Use at 2-5 µg/mg of lysate.

ターゲット情報

関連性

TRIP12 (thyroid hormone receptor interactor 12) is an ATP-dependent multisubunit protein that activates the proteolytic activities of the multifunctional proteinase (20S proteasome) of the 26S complex. TRP12 specifically interacts with the ligand binding domain of the thyroid hormone receptor (in a thyroid hormone T3-independent manner) and with retinoid X receptor (RXR). TRP12 was originally identified as a factor that interacts with the thyroid hormone receptor. It was later found to also interact with AAP-BP1, a component of the NEDD8 –activating enzyme, and function as an E3 ubiquitin ligase for AAP-BP1.

画像



All lanes : Anti-TRIP12/ULF antibody (ab86220) at 0.04 µg/ml

Lane 1 : HeLa whole cell lysate at 5 µg

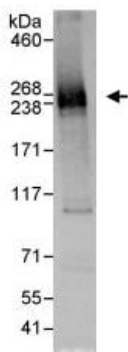
Lane 2 : HeLa whole cell lysate at 1.5 µg

Lane 3 : HeLa whole cell lysate at 0.5 µg

Developed using the ECL technique.

Predicted band size: 220 kDa

Exposure time: 3 minutes



Immunoprecipitation - Anti-TRIP12/ULF antibody
(ab86220)

Detection of human TRIP12/ULF in Immunoprecipitates of HeLa whole cell lysate (1 mg lysate for IP, 20% of IP loaded) using ab86220 at 3 µg/mg lysate for IP, and at 0.1 µg/ml for subsequent Western blot.

Detection: Chemiluminescence with an exposure time of 10 seconds.

Please note: All products are "FOR RESEARCH USE ONLY. NOT FOR USE IN DIAGNOSTIC PROCEDURES"

Our Abpromise to you: Quality guaranteed and expert technical support

- Replacement or refund for products not performing as stated on the datasheet
- Valid for 12 months from date of delivery
- Response to your inquiry within 24 hours
- We provide support in Chinese, English, French, German, Japanese and Spanish
- Extensive multi-media technical resources to help you
- We investigate all quality concerns to ensure our products perform to the highest standards

If the product does not perform as described on this datasheet, we will offer a refund or replacement. For full details of the Abpromise, please visit <https://www.abcam.co.jp/abpromise> or contact our technical team.

Terms and conditions

- Guarantee only valid for products bought direct from Abcam or one of our authorized distributors