

Anti-Trichohyalin antibody [AE15] ab58755

★★★★★ [2 Abreviews](#) [15 References](#) [画像数 1](#)

製品の概要

製品名	Anti-Trichohyalin antibody [AE15]
製品の詳細	Mouse monoclonal [AE15] to Trichohyalin
由来種	Mouse
特異性	This antibody recognises a 220K trichohyalin granular protein, a marker for hair follicular differentiation.
アプリケーション	適用あり: WB, IHC-P, IHC-Fr
種交差性	交差種: Mouse, Human
免疫原	Tissue, cells or virus corresponding to Human Trichohyalin.
特記事項	<p>The Life Science industry has been in the grips of a reproducibility crisis for a number of years. Abcam is leading the way in addressing this with our range of recombinant monoclonal antibodies and knockout edited cell lines for gold-standard validation. Please check that this product meets your needs before purchasing.</p> <p>If you have any questions, special requirements or concerns, please send us an inquiry and/or contact our Support team ahead of purchase. Recommended alternatives for this product can be found below, along with publications, customer reviews and Q&As</p>

製品の特性

製品の状態	Liquid
保存方法	Shipped at 4°C. Upon delivery aliquot and store at -20°C. Avoid freeze / thaw cycles.
バッファー	Preservative: 0.1% Sodium azide Constituent: PBS
精製度	Protein G purified
ポリ/モノ	モノクローナル
クローン名	AE15
アイソタイプ	IgG

アプリケーション

The Abpromise guarantee

Abpromise保証は、 次のテスト済みアプリケーションにおけるab58755の使用に適用されます

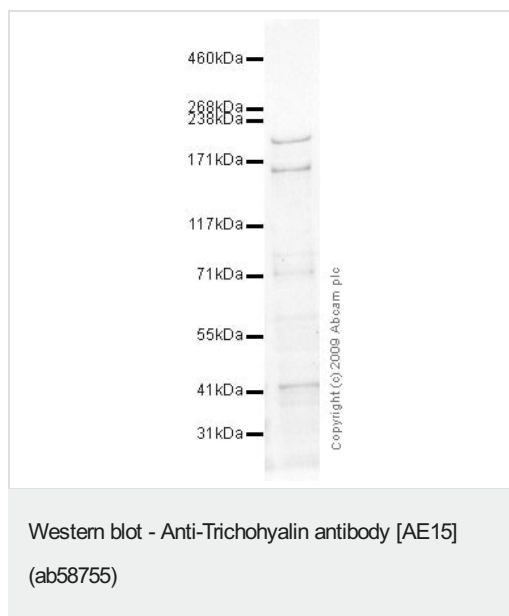
アプリケーションノートには、推奨の開始希釈率がありますが、適切な希釈率につきましてはご確認ください。

アプリケーション	Abreviews	特記事項
WB		1/1000. Predicted molecular weight: 220 kDa.
IHC-P	★★★★★ (1)	Use at an assay dependent concentration. PubMed: 19038788
IHC-Fr	★★★★★ (1)	Use at an assay dependent concentration. PubMed: 19786578

ターゲット情報

機能	Intermediate filament-associated protein that associates in regular arrays with keratin intermediate filaments (KIF) of the inner root sheath cells of the hair follicle and the granular layer of the epidermis. It later becomes cross-linked to KIF by isodipeptide bonds. It may serve as scaffold protein, together with involucrin, in the organization of the cell envelope or even anchor the cell envelope to the KIF network. It may be involved in its own calcium-dependent postsynthetic processing during terminal differentiation.
組織特異性	Found in the hard keratinizing tissues such as the inner root sheath (IRS) of hair follicles and medulla, and in the filiform papillae of dorsal tongue epithelium.
配列類似性	Belongs to the S100-fused protein family. Contains 2 EF-hand domains.
発生段階	Expressed during late differentiation of the epidermis.
ドメイン	Consists of nine domains. Domain 1 contains two EF-hand calcium-binding domains. Domains 2-4, 6, and 8 are almost entirely alpha-helical, configured as a series of peptide repeats of varying regularity, and are thought to form a single-stranded alpha-helical rod stabilized by ionic interactions. Domain 6 is the most regular and may bind KIF directly by ionic interactions. Domains 5 and 7 are less well organized and may induce folds in the molecule. Domain 9 contains the C-terminus, conserved among different species.
翻訳後修飾	Substrate of transglutaminase. Some 200 arginines are probably converted to citrullines by peptidylarginine deimidase.

画像



Anti-Trichohyalin antibody [AE15] (ab58755) at 1 µg/ml + Lung
(Human) Tissue Lysate at 10 µg

Secondary

Goat polyclonal to Mouse IgG - H&L - Pre-Adsorbed (HRP) at
1/3000 dilution

Predicted band size: 220 kDa

Observed band size: 220 kDa

Additional bands at: 165 kDa. We are unsure as to the identity of
these extra bands.

Please note: All products are "FOR RESEARCH USE ONLY. NOT FOR USE IN DIAGNOSTIC PROCEDURES"

Our Abpromise to you: Quality guaranteed and expert technical support

- Replacement or refund for products not performing as stated on the datasheet
- Valid for 12 months from date of delivery
- Response to your inquiry within 24 hours
- We provide support in Chinese, English, French, German, Japanese and Spanish
- Extensive multi-media technical resources to help you
- We investigate all quality concerns to ensure our products perform to the highest standards

If the product does not perform as described on this datasheet, we will offer a refund or replacement. For full details of the Abpromise, please visit <https://www.abcam.co.jp/abpromise> or contact our technical team.

Terms and conditions

- Guarantee only valid for products bought direct from Abcam or one of our authorized distributors