

Anti-TRF2 + TRF1 antibody [TRF-78] ab10579

★★★★★ [10 Abreviews](#) [66 References](#) [画像数 6](#)

製品の概要

製品名	Anti-TRF2 + TRF1 antibody [TRF-78]
製品の詳細	Mouse monoclonal [TRF-78] to TRF2 + TRF1
由来種	Mouse
アプリケーション	適用あり: WB, ICC/IF
種交差性	交差種: Human
免疫原	Full length protein corresponding to Human TRF1. Produced in baculovirus. Database link: P54274
ポジティブ・コントロール	ICC/IF: HeLa cells. WB: HeLa, HEK-293, HepG2 and U-2 OS cell lysate. HeLa nuclear cell lysate.
特記事項	<p>The Life Science industry has been in the grips of a reproducibility crisis for a number of years. Abcam is leading the way in addressing this with our range of recombinant monoclonal antibodies and knockout edited cell lines for gold-standard validation. Please check that this product meets your needs before purchasing.</p> <p>If you have any questions, special requirements or concerns, please send us an inquiry and/or contact our Support team ahead of purchase. Recommended alternatives for this product can be found below, along with publications, customer reviews and Q&As</p>

製品の特性

製品の状態	Liquid
保存方法	Shipped at 4°C. Upon delivery aliquot and store at -20°C or -80°C. Avoid repeated freeze / thaw cycles.
バッファー	pH: 7.40 Preservative: 0.097% Sodium azide Constituent: 0.0268% PBS
精製度	Protein G purified
ポリ/モノ	モノクローナル
クローン名	TRF-78
アイソタイプ	IgG1

アプリケーション

The Abpromise guarantee **Abpromise保証は、**次のテスト済みアプリケーションにおけるab10579の使用に適用されます
アプリケーションノートには、推奨の開始希釈率がありますが、適切な希釈率につきましてはご検討ください。

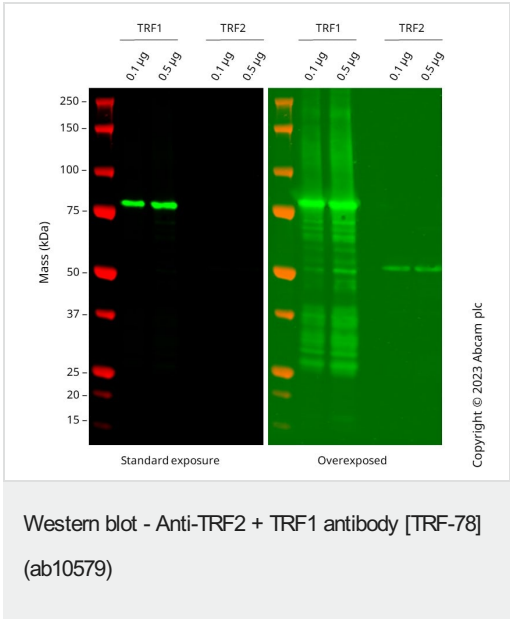
アプリケーション	Abreviews	特記事項
WB	★★★★★ (3)	Use a concentration of 2 - 4 µg/ml. Predicted molecular weight: 50 kDa.
ICC/IF	★★★★★ (7)	1/100.

ターゲット情報

細胞内局在

TRF2: Nucleus. Chromosome > telomere. Colocalizes with telomeric DNA in interphase cells and is located at chromosome ends during metaphase. TRF1: Nucleus. Cytoplasm > cytoskeleton > spindle. Chromosome > telomere. Colocalizes with telomeric DNA in interphase and metaphase cells and is located at chromosome ends during metaphase. Associates with the mitotic spindle.

画像

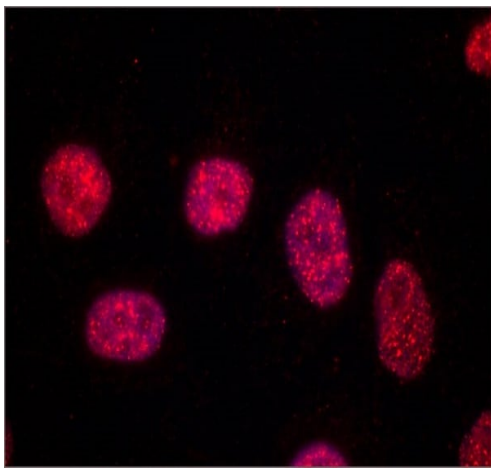


All lanes : Anti-TRF2 + TRF1 antibody [TRF-78] (ab10579) at 4 µg/ml

- Lane 1 :** Recombinant Human TRF1 protein cell lysate at 0.1 µg
- Lane 2 :** Recombinant Human TRF1 protein cell lysate at 0.5 µg
- Lane 3 :** Empty cell lysate
- Lane 4 :** Recombinant Human TRF2 protein cell lysate at 0.1 µg
- Lane 5 :** Recombinant Human TRF2 protein cell lysate at 0.5 µg

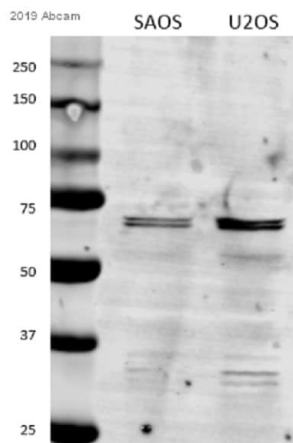
Predicted band size: 50 kDa
Observed band size: 80 kDa

Anti-TERF antibody [TRF-78] (ab10579) staining at 4 ug/ml, shown in green.
In Western blot, ab10579 was shown to bind specifically to TERF. First, samples were run on an SDS-PAGE gel then transferred onto a nitrocellulose membrane. Membranes were blocked in 5 % milk in TBS-0.1 % Tween\$°\$ 20 (TBS-T) before incubation with primary antibodies overnight at 4 °C. Blots were washed four times in TBS-T, incubated with secondary antibodies for 1 h at room temperature, washed again four times then imaged. Secondary antibodies used were Goat anti-Mouse IgG H&L 800CW at 1/20000 dilution



Immunocytochemistry/ Immunofluorescence - Anti-TRF2 + TRF1 antibody [TRF-78] (ab10579)

Immunocytochemistry/ Immunofluorescence analysis of HeLa (Human epithelial cell line from cervix adenocarcinoma) cells labeling TRF1 and TRF2 with ab10579. Cells were fixed and permeabilized with 4% paraformaldehyde followed by 0.5% Triton™ X-100. Fixed cells were stained with 10 µg/mL Anti-TRF2 + TRF1 antibody [TRF-78]. The antibody was developed using Goat Anti-Mouse IgG, Cy3 conjugate. Cells were counterstained with DAPI (blue) to stain nuclei.



Western blot - Anti-TRF2 + TRF1 antibody [TRF-78] (ab10579)
Verified customer

All lanes : Anti-TRF2 + TRF1 antibody [TRF-78] (ab10579) at 1/1000 dilution

Lane 1 : SAOS2 (Human osteosarcoma cell line) cell lysate

Lane 2 : U-2 OS (Human bone osteosarcoma epithelial cell line) cell lysate

Lysates/proteins at 20 µg per lane.

Secondary

All lanes : Goat anti Mouse polyclonal IRDye 800CW at 1/1000 dilution

Predicted band size: 50 kDa

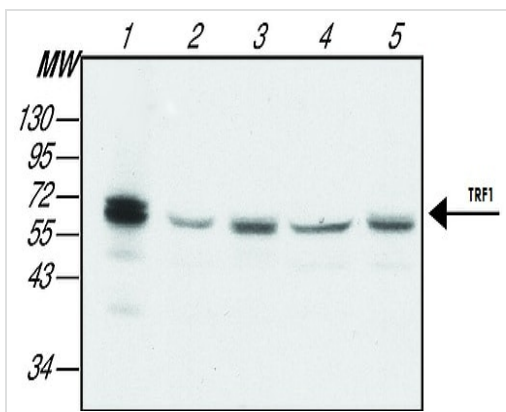
Exposure time: 5 minutes

Blocking step

Milk as blocking agent for 2 hours · Concentration: 5% · Temperature: 21°C.

Incubation time

12 hours · Temperature: 4°C · Diluent: 5% milk in TBST.



Western blot - Anti-TRF2 + TRF1 antibody [TRF-78] (ab10579)

All lanes : Anti-TRF2 + TRF1 antibody [TRF-78] (ab10579) at 4 µg/ml

Lane 1 : HeLa (Human epithelial cell line from cervix adenocarcinoma) nuclear cell lysate

Lane 2 : HeLa cell lysate

Lane 3 : HEK-293T (Human epithelial cell line from embryonic kidney transformed with large T antigen) cell lysate

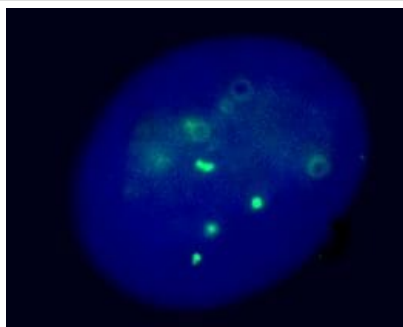
Lane 4 : U-2 OS (Human bone osteosarcoma epithelial cell line) cell lysate

Lane 5 : HepG2 (Human liver hepatocellular carcinoma cell line) cell lysate

Secondary

All lanes : Goat Anti-Mouse IgG-Peroxidase

Predicted band size: 50 kDa

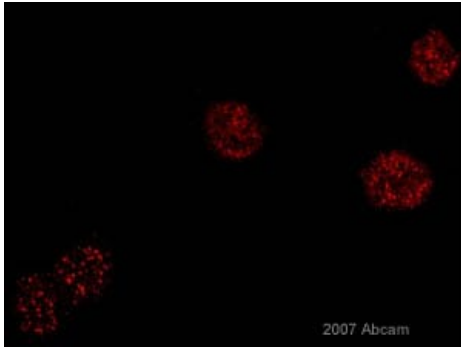


Immunocytochemistry/ Immunofluorescence - Anti-TRF2 + TRF1 antibody [TRF-78] (ab10579)

This image is courtesy of Luke Hughes-Davies and Rhiannon Jade, Gurdon Institute, Cambridge, UK

Immunofluorescent imaging of human cells (U2OS) with ab10579 confirms the specificity of this antibody. A few intense nuclear foci are seen in interphase cells, corresponding to telomeric localisation. The complete absence of background nuclear or cytoplasmic staining confirms the specificity of this antibody. This image is in exact agreement with numerous published reports.

IF was performed with a standard paraformaldehyde technique (fixed in PBS buffered PFH 4% for 5 minutes, permeabilised with 0.5% triton-PBS for 5 minutes, blocked with 5% milk / 0.2% tween for one hour. Primary antibody used at 1/100 in 5% milk / 0.2% TWEEN for one hour, secondary antibody for 30 minutes. All blocking and incubation steps carried out at 37 degrees. Nuclei are visualised using Hoechst stain.



ab10579 at 1/500 staining human HeLa (Human epithelial cell line from cervix adenocarcinoma) cells by ICC/IF. The cells were paraformaldehyde fixed and blocked with BSA prior to incubation with the antibody for 45 minutes. An Alexa Fluor® 555 conjugated donkey anti-mouse antibody was used as the secondary.

Immunocytochemistry/ Immunofluorescence - Anti-TRF2 + TRF1 antibody [TRF-78] (ab10579)

This image is courtesy of an anonymous Abreview

Please note: All products are "FOR RESEARCH USE ONLY. NOT FOR USE IN DIAGNOSTIC PROCEDURES"

Our Abpromise to you: Quality guaranteed and expert technical support

- Replacement or refund for products not performing as stated on the datasheet
- Valid for 12 months from date of delivery
- Response to your inquiry within 24 hours
- We provide support in Chinese, English, French, German, Japanese and Spanish
- Extensive multi-media technical resources to help you
- We investigate all quality concerns to ensure our products perform to the highest standards

If the product does not perform as described on this datasheet, we will offer a refund or replacement. For full details of the Abpromise, please visit <https://www.abcam.co.jp/abpromise> or contact our technical team.

Terms and conditions

- Guarantee only valid for products bought direct from Abcam or one of our authorized distributors