

Anti-TRF1 antibody ab1423

★★★★ 4 Abreviews 39 References 画像数 3

製品の概要

製品名	Anti-TRF1 antibody
製品の詳細	Rabbit polyclonal to TRF1
由来種	Rabbit
アプリケーション	適用あり: ICC, WB 適用なし: IHC-P
種交差性	交差種: Human
免疫原	Recombinant full length protein corresponding to Human TRF1. Human full length recombinant protein expressed in bacteria.

特記事項

The Life Science industry has been in the grips of a reproducibility crisis for a number of years. Abcam is leading the way in addressing this with our range of recombinant monoclonal antibodies and knockout edited cell lines for gold-standard validation. Please check that this product meets your needs before purchasing.

If you have any questions, special requirements or concerns, please send us an inquiry and/or contact our Support team ahead of purchase. Recommended alternatives for this product can be found below, along with publications, customer reviews and Q&As

製品の特性

製品の状態	Liquid
保存方法	Shipped at 4°C. Store at +4°C short term (1-2 weeks). Upon delivery aliquot. Store at -20°C or -80°C. Avoid freeze / thaw cycle.
バッファー	pH: 7.20 Preservative: 0.05% Sodium azide
精製度	Whole antiserum
ポリ/モノ	ポリクローナル
アイソタイプ	IgG

アプリケーション

The Abpromise guarantee

Abpromise保証は、次のテスト済みアプリケーションにおけるab1423の使用に適用されます

アプリケーションノートには、推奨の開始希釈率がありますが、適切な希釈率につきましてはご確認ください。

アプリケーション	Abreviews	特記事項
ICC		Use at an assay dependent concentration.
WB	★☆☆☆☆ (3)	1/2000. Detects a band of approximately 60-65 kDa. An additional non specific band at 35 kDa may be observed. Denatured whole cell extracts (prepare total cell extracts with 6M urea, 1% SDS, 150 mM NaCl, 25mM Tris pH8, and then sonicate for 10 seconds)and TBS based buffers with 0.5% Tween 20 are recommended.

追加情報

Is unsuitable for IHC-P.

ターゲット情報

機能

Binds the telomeric double-stranded TTAGGG repeat and negatively regulates telomere length. Involved in the regulation of the mitotic spindle. Component of the shelterin complex (telosome) that is involved in the regulation of telomere length and protection. Shelterin associates with arrays of double-stranded TTAGGG repeats added by telomerase and protects chromosome ends; without its protective activity, telomeres are no longer hidden from the DNA damage surveillance and chromosome ends are inappropriately processed by DNA repair pathways.

組織特異性

Highly expressed and ubiquitous. Isoform Pin2 predominates.

配列類似性

Contains 1 HTH myb-type DNA-binding domain.

ドメイン

The acidic N-terminal domain binds to the ankyrin repeats of TNKS1 and TNKS2. The C-terminal domain binds microtubules.

The TRFH dimerization region mediates the interaction with TIN2.

翻訳後修飾

Phosphorylated preferentially on Ser-219 in an ATM-dependent manner in response to ionizing DNA damage.

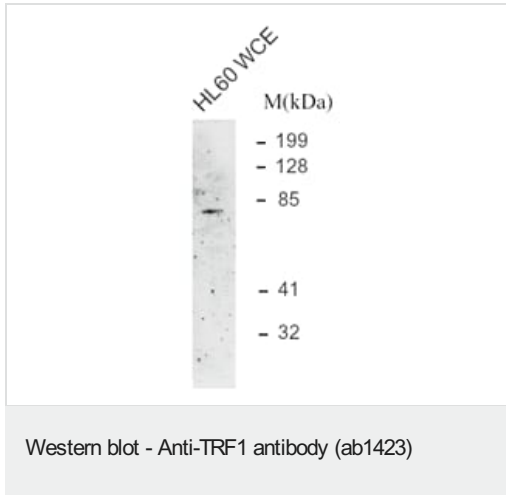
ADP-ribosylation by TNKS1 or TNKS2 diminishes its ability to bind to telomeric DNA.

Ubiquitinated by RLIM/RNF12, leading to its degradation by the proteasome. Ubiquitinated by a SCF (SKP1-CUL1-F-box protein) ubiquitin-protein ligase complex, leading to its degradation by the proteasome.

細胞内局在

Nucleus. Cytoplasm > cytoskeleton > spindle. Chromosome > telomere. Colocalizes with telomeric DNA in interphase and metaphase cells and is located at chromosome ends during metaphase. Associates with the mitotic spindle.

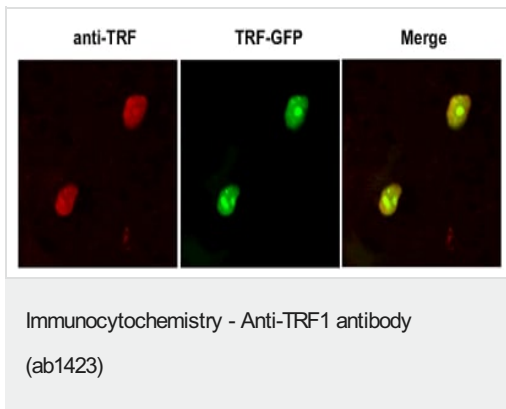
画像



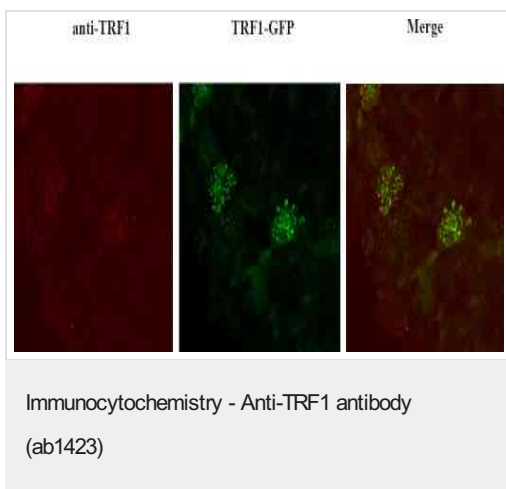
Anti-TRF1 antibody (ab1423) at 1/2000 dilution + HL-60 (Human promyelocytic leukemia cell line) whole cell extract

Observed band size: 60-65 kDa

Western blot labelling TRF1 in HL-60 (Human promyelocytic leukemia cell line) whole cell extract using ab1423 at 1/2000. A single band at 60-65 kD is detected.



Cells transfected with a TRF1-GFP construct. On the left: immunofluorescence with the anti-TRF1 antibody used at 1/300, with a Texas Red-conjugated secondary antibody. In the centre: fluorescence from the GFP. Right: merge of both images showing overlap of GFP fluorescence and antibody staining.



The cells in the first image are probably in a stage of the cell cycle where the signal is not so clear. In this image the antibody is shown to recognise the same signal but staining is shown as 20-30 spots (punctate foci).

Please note: All products are "FOR RESEARCH USE ONLY. NOT FOR USE IN DIAGNOSTIC PROCEDURES"

Our Abpromise to you: Quality guaranteed and expert technical support

- Replacement or refund for products not performing as stated on the datasheet
- Valid for 12 months from date of delivery
- Response to your inquiry within 24 hours

- We provide support in Chinese, English, French, German, Japanese and Spanish
- Extensive multi-media technical resources to help you
- We investigate all quality concerns to ensure our products perform to the highest standards

If the product does not perform as described on this datasheet, we will offer a refund or replacement. For full details of the Abpromise, please visit <https://www.abcam.co.jp/abpromise> or contact our technical team.

Terms and conditions

- Guarantee only valid for products bought direct from Abcam or one of our authorized distributors