

# Anti-Treponema pallidum antibody ab20923

**4 References**   [画像数 1](#)

### 製品の概要

製品名	Anti-Treponema pallidum antibody
製品の詳細	Rabbit polyclonal to Treponema pallidum
由来種	Rabbit
アプリケーション	<b>適用あり:</b> ICC/IF, IHC-P
種交差性	<b>交差種:</b> Treponema pallidum
免疫原	Full length native protein (purified) corresponding to Treponema pallidum.
特記事項	<p>The Life Science industry has been in the grips of a reproducibility crisis for a number of years. Abcam is leading the way in addressing this with our range of recombinant monoclonal antibodies and knockout edited cell lines for gold-standard validation. Please check that this product meets your needs before purchasing.</p> <p>If you have any questions, special requirements or concerns, please send us an inquiry and/or contact our Support team ahead of purchase. Recommended alternatives for this product can be found below, along with publications, customer reviews and Q&amp;As</p>

### 製品の特性

製品の状態	Liquid
保存方法	Shipped at 4°C. Upon delivery aliquot and store at -20°C. Avoid freeze / thaw cycles.
バッファー	Preservative: 0.1% Sodium azide Constituent: 0.0268% PBS
精製度	Protein A purified
特記事項(精製)	>95% pure. Sodium sulfate precipitation and DEAE chromatography.
ポリ/モノ	ポリクローナル
アイソタイプ	IgG

### アプリケーション

#### The Abpromise guarantee

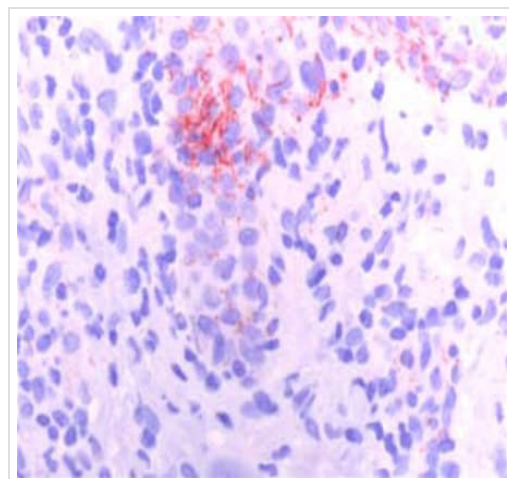
**Abpromise保証は、次のテスト済みアプリケーションにおけるab20923の使用に適用されます**  
アプリケーションノートには、推奨の開始希釈率がありますが、適切な希釈率につきましてはご検討ください。

アプリケーション	Abreviews	特記事項
ICC/IF		1/3000.
IHC-P		1/100. Perform heat mediated antigen retrieval with citrate buffer pH 6 before commencing with IHC staining protocol.

## ターゲット情報

関連性	Treponema pallidum is the causative agent of syphilis. It is a gram negative spirochete, a helical to sinusoidal bacterium with outer and cytoplasmic membranes, a thin peptidoglycan layer, and periplasmic flagella.
-----	--

## 画像



Immunohistochemical analysis of HIV-infected syphilitic skin tissue, staining *Treponema pallidum* with ab20923.

Antigen retrieval was performed before blocking with normal horse serum and 2% BSA. Samples were incubated with primary antibody overnight at 4°C. A biotinylated horse anti-rabbit IgG was used as the secondary antibody. Staining was detected using AEC.

Immunohistochemistry (Formalin/PFA-fixed paraffin-embedded sections) - Anti-Treponema pallidum antibody (ab20923)

Image from Stary G et al., The American Journal of Pathology, Volume 177, Issue 5, November 2010, Pages 2421–2432. Fig 7.; doi: 10.2353/ajpath.2010.100277. Epub 2010 Oct 1. with permission from Elsevier.

**Please note:** All products are "FOR RESEARCH USE ONLY. NOT FOR USE IN DIAGNOSTIC PROCEDURES"

## Our Abpromise to you: Quality guaranteed and expert technical support

- Replacement or refund for products not performing as stated on the datasheet
- Valid for 12 months from date of delivery
- Response to your inquiry within 24 hours
- We provide support in Chinese, English, French, German, Japanese and Spanish
- Extensive multi-media technical resources to help you

- We investigate all quality concerns to ensure our products perform to the highest standards

If the product does not perform as described on this datasheet, we will offer a refund or replacement. For full details of the Abpromise, please visit <https://www.abcam.co.jp/abpromise> or contact our technical team.

### **Terms and conditions**

---

- Guarantee only valid for products bought direct from Abcam or one of our authorized distributors