

# Anti-TREM2 antibody [EPR20243] - BSA and Azide free ab232470

KO 評価済 リコンビナント RabMAb

★★★★★ **1 Abreviews** 画像数 3

### 製品の概要

製品名	Anti-TREM2 antibody [EPR20243] - BSA and Azide free
製品の詳細	Rabbit monoclonal [EPR20243] to TREM2 - BSA and Azide free
由来種	Rabbit
アプリケーション	<b>適用あり:</b> IP, WB
種交差性	<b>交差種:</b> Human
免疫原	Recombinant fragment. This information is proprietary to Abcam and/or its suppliers.
ポジティブ・コントロール	WB: Wild-type THP-1 and THP-1 cell lysate.
特記事項	<p>ab232470 is the carrier-free version of <a href="#">ab209814</a>.</p> <p>Our <b>carrier-free</b> antibodies are typically supplied in a PBS-only formulation, purified and free of BSA, sodium azide and glycerol. The carrier-free buffer and high concentration allow for increased conjugation efficiency.</p> <p>This conjugation-ready format is designed for use with fluorochromes, metal isotopes, oligonucleotides, and enzymes, which makes them ideal for antibody labelling, functional and cell-based assays, flow-based assays (e.g. mass cytometry) and Multiplex Imaging applications.</p> <p>Use our <b>conjugation kits</b> for antibody conjugates that are ready-to-use in as little as 20 minutes with &lt;1 minute hands-on-time and 100% antibody recovery: available for fluorescent dyes, HRP, biotin and gold.</p> <p>This product is compatible with the Maxpar<sup>®</sup> Antibody Labeling Kit from Fluidigm, without the need for antibody preparation. Maxpar<sup>®</sup> is a trademark of Fluidigm Canada Inc.</p> <p>This product is a recombinant monoclonal antibody, which offers several advantages including:</p> <ul style="list-style-type: none"> <li>- High batch-to-batch consistency and reproducibility</li> <li>- Improved sensitivity and specificity</li> <li>- Long-term security of supply</li> <li>- Animal-free production</li> </ul> <p>For more information <a href="#">see here</a>.</p> <p>Our RabMAb<sup>®</sup> technology is a patented hybridoma-based technology for making rabbit monoclonal antibodies. For details on our patents, please refer to <a href="#">RabMAb<sup>®</sup> patents</a>.</p>

## 製品の特性

製品の状態	Liquid
保存方法	Shipped at 4°C. Store at +4°C. Do Not Freeze.
バッファー	pH: 7.2 Constituent: PBS
キャリア・フリー	はい
精製度	Protein A purified
ポリ/モノ	モノクローナル
クローン名	EPR20243
アイソタイプ	IgG

## アプリケーション

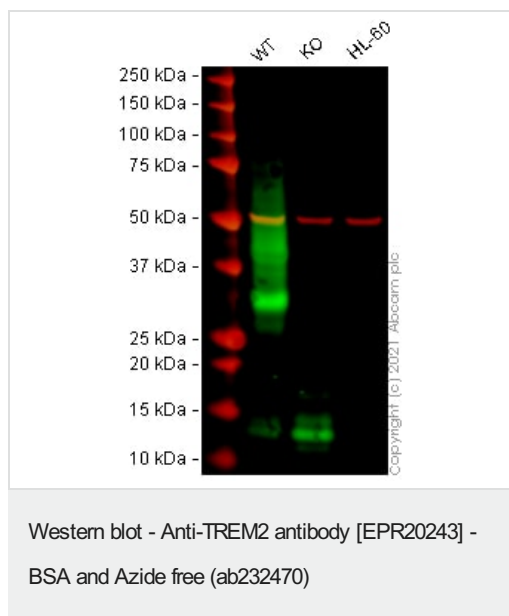
**The Abpromise guarantee**      **Abpromise保証は、次のテスト済みアプリケーションにおけるab232470の使用に適用されます**  
アプリケーションノートには、推奨の開始希釈率がありますが、適切な希釈率につきましてはご検討ください。

アプリケーション	Abreviews	特記事項
IP		Use at an assay dependent concentration.
WB		Use at an assay dependent concentration. Detects a band of approximately 26 kDa (predicted molecular weight: 25 kDa).

## ターゲット情報

機能	May have a role in chronic inflammations and may stimulate production of constitutive rather than inflammatory chemokines and cytokines. Forms a receptor signaling complex with TYROBP and triggers activation of the immune responses in macrophages and dendritic cells.
組織特異性	Expressed on macrophages and dendritic cells but not on granulocytes or monocytes. In the CNS strongest expression seen in the basal ganglia, corpus callosum, medulla oblongata and spinal cord.
関連疾患	Defects in TREM2 are a cause of polycystic lipomembranous osteodysplasia with sclerosing leukoencephalopathy (PLOS) [MIM:221770]; also known as presenile dementia with bone cysts or Nasu-Hakola disease (NHD). PLOS is a recessively inherited disease characterized by a combination of psychotic symptoms rapidly progressing to presenile dementia and bone cysts restricted to wrists and ankles. PLOS has a global distribution, although most of the patients have been diagnosed in Finland and Japan, with an estimated population prevalence of 2x10 <sup>-6</sup> in the Finns.
配列類似性	Contains 1 Ig-like V-type (immunoglobulin-like) domain.
細胞内局在	Secreted and Cell membrane.

## 画像



**All lanes :** Anti-TREM2 antibody [EPR20243] ([ab209814](#)) at 1/1000 dilution

**Lane 1 :** Wild-type THP-1 cell lysate

**Lane 2 :** TREM2 knockout THP-1 cell lysate

**Lane 3 :** HL-60 cell lysate

Lysates/proteins at 20 µg per lane.

Performed under reducing conditions.

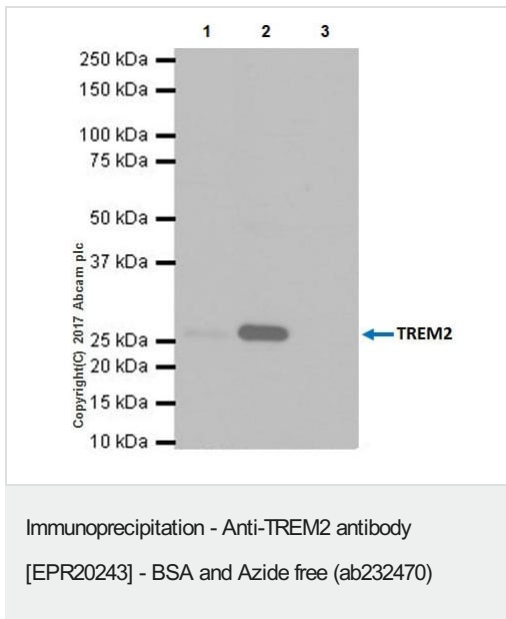
**Predicted band size:** 25 kDa

**Observed band size:** 30 kDa

This data was developed using the same antibody clone in a different buffer formulation ([ab209814](#)).

**Lanes 1 - 3:** Merged signal (red and green). Green - [ab209814](#) observed at 30 kDa. Red - loading control [ab7291](#) (Mouse anti-Alpha Tubulin [DM1A]) observed at 55 kDa.

[ab209814](#) was shown to react with TREM2 in wild-type THP-1 cells in Western blot with loss of signal observed in TREM2 knockout cell line [ab269489](#) (TREM2 knockout cell lysate [ab269652](#)). Wild-type THP-1 and TREM2 knockout cell lysates were subjected to SDS-PAGE. Membranes were blocked in 3 % milk in TBS-T (0.1 % Tween®) before incubation with [ab209814](#) and [ab7291](#) (Mouse anti-Alpha Tubulin [DM1A]) overnight at 4 °C at a 1 in 1000 dilution and a 1 in 20000 dilution respectively. Blots were incubated with Goat anti-Rabbit IgG H&L (IRDye® 800CW) preabsorbed ([ab216773](#)) and Goat anti-Mouse IgG H&L (IRDye® 680RD) preabsorbed ([ab216776](#)) secondary antibodies at 1 in 20000 dilution for 1 h at room temperature before imaging.



TREM2 was immunoprecipitated from 0.35 mg of THP-1 (Human monocytic leukemia cell line) whole cell lysate with **ab209814** at 1/40 dilution. Western blot was performed from the immunoprecipitate using **ab209814** at 1/1000 dilution. VeriBlot for IP Detection Reagent (HRP) (**ab131366**), was used for detection at 1/10000 dilution.

Lane 1: THP-1 whole cell lysate, 10 µg (Input).

Lane 2: **ab209814** IP in THP-1 whole cell lysate.




Lane 3: Rabbit monoclonal IgG (**ab172730**) instead of **ab209814** in THP-1 whole cell lysate.

Blocking and dilution buffer and concentration: 5% NFDm/TBST.

Exposure time: 3 minutes.

This data was developed using the same antibody clone in a different buffer formulation containing PBS, BSA, glycerol, and sodium azide (**ab209814**).

Why choose a recombinant antibody?

 <p><b>Research with confidence</b> Consistent and reproducible results</p>	 <p><b>Long-term and scalable supply</b> Recombinant technology</p>
 <p><b>Success from the first experiment</b> Confirmed specificity</p>	 <p><b>Ethical standards compliant</b> Animal-free production</p>

Anti-TREM2 antibody [EPR20243] - BSA and Azide free (ab232470)

**Please note:** All products are "FOR RESEARCH USE ONLY. NOT FOR USE IN DIAGNOSTIC PROCEDURES"

### **Our Abpromise to you: Quality guaranteed and expert technical support**

---

- Replacement or refund for products not performing as stated on the datasheet
- Valid for 12 months from date of delivery
- Response to your inquiry within 24 hours
  
- We provide support in Chinese, English, French, German, Japanese and Spanish
- Extensive multi-media technical resources to help you
- We investigate all quality concerns to ensure our products perform to the highest standards

If the product does not perform as described on this datasheet, we will offer a refund or replacement. For full details of the Abpromise, please visit <https://www.abcam.co.jp/abpromise> or contact our technical team.

### **Terms and conditions**

---

- Guarantee only valid for products bought direct from Abcam or one of our authorized distributors