


Anti-TREM2 antibody ab95470

★★★★☆ [4 Abreviews](#) [7 References](#) [画像数 2](#)

製品の概要

製品名	Anti-TREM2 antibody
製品の詳細	Goat polyclonal to TREM2
由来種	Goat
アプリケーション	適用あり: ICC
種交差性	交差種: Mouse 交差が予測される動物種: Rat 
免疫原	Synthetic peptide corresponding to Mouse TREM2 aa 154-165 (internal sequence). Sequence: C-QVEHSTSRNQET Database link: Q99NH8 Run BLAST with Run BLAST with
ポジティブ・コントロール	ICC: NIH3T3-L1 cells
特記事項	<p>The Life Science industry has been in the grips of a reproducibility crisis for a number of years. Abcam is leading the way in addressing this with our range of recombinant monoclonal antibodies and knockout edited cell lines for gold-standard validation. Please check that this product meets your needs before purchasing.</p> <p>If you have any questions, special requirements or concerns, please send us an inquiry and/or contact our Support team ahead of purchase. Recommended alternatives for this product can be found below, along with publications, customer reviews and Q&As</p>

製品の特性

製品の状態	Liquid
保存方法	Shipped at 4°C. Upon delivery aliquot and store at -20°C. Avoid repeated freeze / thaw cycles.
バッファー	pH: 7.30 Preservative: 0.02% Sodium azide Constituents: 0.5% BSA, Tris buffered saline
精製度	Immunogen affinity purified
特記事項 (精製)	ab95470 is purified from goat serum by ammonium sulphate precipitation followed by antigen affinity chromatography using the immunizing peptide.

ポリモノ
アイソタイプ

ポリクローナル
IgG

アプリケーション

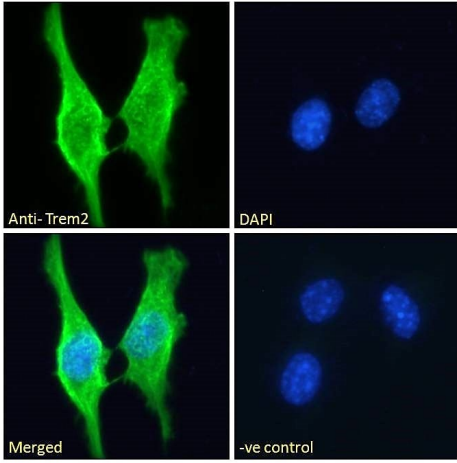
The Abpromise guarantee **Abpromise保証は、次のテスト済みアプリケーションにおけるab95470の使用に適用されます**
アプリケーションノートには、推奨の開始希釈率がありますが、適切な希釈率につきましてはご検討ください。

アプリケーション	Abreviews	特記事項
ICC		Use a concentration of 10 mg/ml.

ターゲット情報

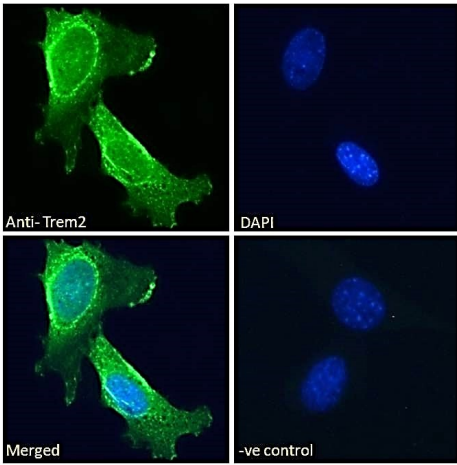
機能	May have a role in chronic inflammations and may stimulate production of constitutive rather than inflammatory chemokines and cytokines. Forms a receptor signaling complex with TYROBP and triggers activation of the immune responses in macrophages and dendritic cells.
組織特異性	Expressed on macrophages and dendritic cells but not on granulocytes or monocytes. In the CNS strongest expression seen in the basal ganglia, corpus callosum, medulla oblongata and spinal cord.
関連疾患	Defects in TREM2 are a cause of polycystic lipomembranous osteodysplasia with sclerosing leukoencephalopathy (PLOS) [MIM:221770]; also known as presenile dementia with bone cysts or Nasu-Hakola disease (NHD). PLOS is a recessively inherited disease characterized by a combination of psychotic symptoms rapidly progressing to presenile dementia and bone cysts restricted to wrists and ankles. PLOS has a global distribution, although most of the patients have been diagnosed in Finland and Japan, with an estimated population prevalence of 2×10^{-6} in the Finns.
配列類似性	Contains 1 Ig-like V-type (immunoglobulin-like) domain.
細胞内局在	Secreted and Cell membrane.

画像



Immunocytochemistry - Anti-TREM2 antibody
(ab95470)

Immunocytochemistry/ Immunofluorescence analysis of paraformaldehyde fixed mouse 3T3-L1 cells labeling TREM2 with ab95470 at 10 µg/mL (incubation time, 1 hour). Cells were permeabilized with 0.15% Triton. Alexa Fluor 488 secondary antibody was used at 2µg/mL. The nuclear stain is DAPI (blue). Negative control: Unimmunized goat IgG at 10 µg/mL followed by Alexa Fluor 488 secondary antibody 2 µg/mL.



Immunocytochemistry - Anti-TREM2 antibody
(ab95470)

Immunofluorescence analysis of paraformaldehyde fixed 3T3-L1 cells, permeabilized with 0.15% Triton. Primary incubation with ab95470 1hr (10 µg/ml) followed by Alexa Fluor 488 secondary antibody (2 µg/ml), showing membrane staining. The nuclear stain is DAPI (blue). Negative control: Unimmunized goat IgG (10 µg/ml) followed by Alexa Fluor 488 secondary antibody (2 µg/ml).

Please note: All products are "FOR RESEARCH USE ONLY. NOT FOR USE IN DIAGNOSTIC PROCEDURES"

Our Abpromise to you: Quality guaranteed and expert technical support

- Replacement or refund for products not performing as stated on the datasheet
- Valid for 12 months from date of delivery
- Response to your inquiry within 24 hours
- We provide support in Chinese, English, French, German, Japanese and Spanish
- Extensive multi-media technical resources to help you
- We investigate all quality concerns to ensure our products perform to the highest standards

If the product does not perform as described on this datasheet, we will offer a refund or replacement. For full details of the Abpromise, please visit <https://www.abcam.co.jp/abpromise> or contact our technical team.

Terms and conditions

- Guarantee only valid for products bought direct from Abcam or one of our authorized distributors