

Anti-TREM1 antibody [L5-B8] ab106153

画像数 1

製品の概要

製品名	Anti-TREM1 antibody [L5-B8]
製品の詳細	Rat monoclonal [L5-B8] to TREM1
由来種	Rat
アプリケーション	適用あり: Flow Cyt 適用なし: IHC-Fr or IHC-P
種交差性	交差種: Mouse
免疫原	Mouse TREM1-Human IgG-Fc fusion protein.
特記事項	<p>The Life Science industry has been in the grips of a reproducibility crisis for a number of years. Abcam is leading the way in addressing this with our range of recombinant monoclonal antibodies and knockout edited cell lines for gold-standard validation. Please check that this product meets your needs before purchasing.</p> <p>If you have any questions, special requirements or concerns, please send us an inquiry and/or contact our Support team ahead of purchase. Recommended alternatives for this product can be found below, along with publications, customer reviews and Q&As</p>

製品の特性

製品の状態	Liquid
保存方法	Shipped at 4°C. Upon delivery aliquot and store at -20°C. Avoid freeze / thaw cycles.
バッファー	Constituents: 0.1% BSA, PBS
精製度	Protein G purified
特記事項(精製)	ab106153 is 0.2 µm filtered.
ポリ/モノ	モノクローナル
クローン名	L5-B8
アイソタイプ	IgG2a

アプリケーション

The Abpromise guarantee **Abpromise保証は、** 次のテスト済みアプリケーションにおけるab106153の使用に適用されます
アプリケーションノートには、推奨の開始希釈率がありますが、適切な希釈率につきましてはご検討ください。

アプリケーション	Abreviews	特記事項
Flow Cyt		1/50. ab18450 - Rat monoclonal IgG2a, is suitable for use as an isotype control with this antibody.

追加情報 Is unsuitable for IHC-Fr or IHC-P.

ターゲット情報

機能 Stimulates neutrophil and monocyte-mediated inflammatory responses. Triggers release of pro-inflammatory chemokines and cytokines, as well as increased surface expression of cell activation markers. Amplifier of inflammatory responses that are triggered by bacterial and fungal infections and is a crucial mediator of septic shock.

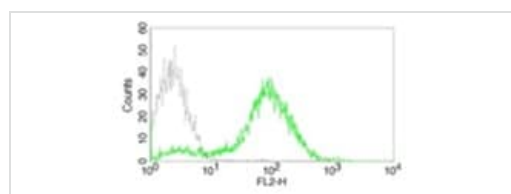
組織特異性 Highly expressed in adult liver, lung and spleen than in corresponding fetal tissue. Also expressed in the lymph node, placenta, spinal cord and heart tissues. Expression is more elevated in peripheral blood leukocytes than in the bone marrow and in normal cells than malignant cells. Expressed at low levels in the early development of the hematopoietic system and in the promonocytic stage and at high levels in mature monocytes. Strongly expressed in acute inflammatory lesions caused by bacteria and fungi. Isoform 2 was detected in the lung, liver and mature monocytes.

配列類似性 Contains 1 Ig-like V-type (immunoglobulin-like) domain.

翻訳後修飾 Glycosylated.

細胞内局在 Secreted and Cell membrane.

画像



ab106153 in flow cytometry. Goat ant-rat-PE (grey line) and ab106153/Goat anti-rat-PE (green line).

Flow Cytometry - Anti-TREM1 antibody [L5-B8]
(ab106153)

Please note: All products are "FOR RESEARCH USE ONLY. NOT FOR USE IN DIAGNOSTIC PROCEDURES"

Our Abpromise to you: Quality guaranteed and expert technical support

- Replacement or refund for products not performing as stated on the datasheet
- Valid for 12 months from date of delivery
- Response to your inquiry within 24 hours
- We provide support in Chinese, English, French, German, Japanese and Spanish

- Extensive multi-media technical resources to help you
- We investigate all quality concerns to ensure our products perform to the highest standards

If the product does not perform as described on this datasheet, we will offer a refund or replacement. For full details of the Abpromise, please visit <https://www.abcam.co.jp/abpromise> or contact our technical team.

Terms and conditions

- Guarantee only valid for products bought direct from Abcam or one of our authorized distributors