


Anti-Translin/TSN antibody ab96155

画像数 3

製品の概要

製品名	Anti-Translin/TSN antibody
製品の詳細	Rabbit polyclonal to Translin/TSN
由来種	Rabbit
アプリケーション	適用あり: ICC/IF, WB
種交差性	交差種: Human 交差が予測される動物種: Mouse, Rat, Chicken, Cow, Zebrafish, Orangutan 
免疫原	Synthetic peptide corresponding to Human Translin/TSN aa 150 to the C-terminus conjugated to keyhole limpet haemocyanin. (Peptide available as ab107811)
ポジティブ・コントロール	This antibody gave a positive signal in the following human tissue lysates: Brain; Testis; Lymph Node as well as the following human whole cell lysates: Jurkat; HeLa; HepG2; MCF7.
特記事項	<p>The Life Science industry has been in the grips of a reproducibility crisis for a number of years. Abcam is leading the way in addressing this with our range of recombinant monoclonal antibodies and knockout edited cell lines for gold-standard validation. Please check that this product meets your needs before purchasing.</p> <p>If you have any questions, special requirements or concerns, please send us an inquiry and/or contact our Support team ahead of purchase. Recommended alternatives for this product can be found below, along with publications, customer reviews and Q&As</p>

製品の特性

製品の状態	Liquid
保存方法	Shipped at 4°C. Store at +4°C short term (1-2 weeks). Upon delivery aliquot. Store at -20°C or -80°C. Avoid freeze / thaw cycle.
バッファー	pH: 7.40 Preservative: 0.02% Sodium azide Constituent: PBS
	Batches of this product that have a concentration < 1mg/ml may have BSA added as a stabilising agent. If you would like information about the formulation of a specific lot, please contact our scientific support team who will be happy to help.

精製度	Immunogen affinity purified
ポリ/モノ	ポリクローナル
アイソタイプ	IgG

アプリケーション

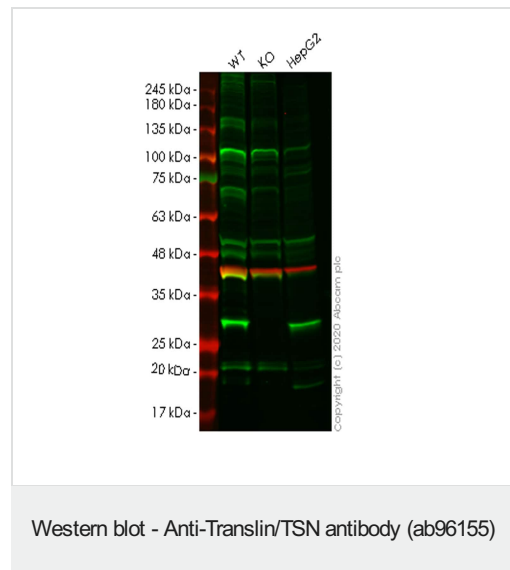
The Abpromise guarantee Abpromise保証は、次のテスト済みアプリケーションにおけるab96155の使用に適用されます
 アプリケーションノートには、推奨の開始希釈率がありますが、適切な希釈率につきましてはご検討ください。

アプリケーション	Abreviews	特記事項
ICC/IF		Use a concentration of 1 µg/ml.
WB		Use a concentration of 1 µg/ml. Detects a band of approximately 26 kDa (predicted molecular weight: 26 kDa).

ターゲット情報

製品の状態 Cellular Localisation: Cytoplasm. Nucleus

画像



All lanes : Anti-Translin/TSN antibody (ab96155) at 1/500 dilution

Lane 1 : Wild-type HeLa cell lysate

Lane 2 : TSN knockout HeLa cell lysate

Lane 3 : HepG2 cell lysate

Lysates/proteins at 20 µg per lane.

Secondary

All lanes : Goat anti-Rabbit IgG H&L (IRDye® 800CW)
 preadsorbed ([ab216773](#)) at 1/10000 dilution

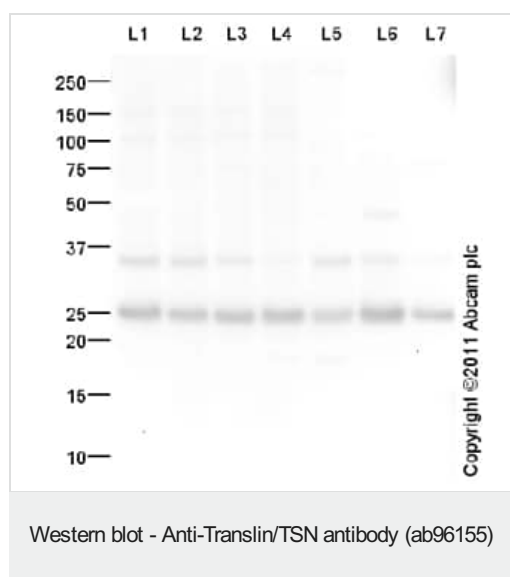
Predicted band size: 26 kDa

Observed band size: 26 kDa

Lanes 1-3: Merged signal (red and green). Green - ab96155 observed at 26 kDa. Red - loading control [ab8245](#) observed at 36 kDa.

ab96155 Anti-Translin/TSN antibody was shown to specifically

react with Translin/TSN in wild-type HeLa cells. Loss of signal was observed when knockout cell line [ab264778](#) (knockout cell lysate [ab258255](#)) was used. Wild-type and Translin/TSN knockout samples were subjected to SDS-PAGE. ab96155 and Anti-GAPDH antibody [6C5] - Loading Control ([ab8245](#)) were incubated overnight at 4°C at 1 in 500 dilution and 1 in 20000 dilution respectively. Blots were developed with Goat anti-Rabbit IgG H&L (IRDye® 800CW) preadsorbed ([ab216773](#)) and Goat anti-Mouse IgG H&L (IRDye® 680RD) preadsorbed ([ab216776](#)) secondary antibodies at 1 in 20000 dilution for 1 hour at room temperature before imaging.



All lanes : Anti-Translin/TSN antibody (ab96155) at 1 µg/ml

Lane 1 : Jurkat (Human T cell lymphoblast-like cell line) Whole Cell Lysate

Lane 2 : HeLa (Human epithelial carcinoma cell line) Whole Cell Lysate

Lane 3 : HepG2 (Human hepatocellular liver carcinoma cell line) Whole Cell Lysate

Lane 4 : MCF7 (Human breast adenocarcinoma cell line) Whole Cell Lysate

Lane 5 : Human brain tissue lysate - total protein ([ab29466](#))

Lane 6 : Human testis tissue lysate - total protein ([ab30257](#))

Lane 7 : Human lymph node tissue lysate - total protein ([ab29871](#))

Lysates/proteins at 10 µg per lane.

Secondary

All lanes : Goat Anti-Rabbit IgG H&L (HRP) preadsorbed ([ab97080](#)) at 1/5000 dilution

Developed using the ECL technique.

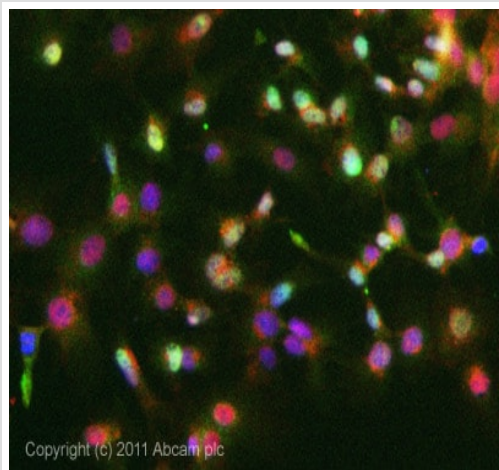
Performed under reducing conditions.

Predicted band size: 26 kDa

Observed band size: 26 kDa

Additional bands at: 35 kDa. We are unsure as to the identity of these extra bands.

Exposure time: 1 minute



Immunocytochemistry/ Immunofluorescence - Anti-Translin/TSN antibody (ab96155)

ICC/IF image of ab96155 stained HepG2 cells. The cells were 4% formaldehyde fixed (10 min) and then incubated in 1%BSA / 10% normal goat serum / 0.3M glycine in 0.1% PBS-Tween for 1h to permeabilise the cells and block non-specific protein-protein interactions. The cells were then incubated with the antibody ab96155 at 1µg/ml overnight at +4°C. The secondary antibody (green) was DyLight® 488 goat anti- rabbit (**ab96899**) IgG (H+L) used at a 1/1000 dilution for 1h. Alexa Fluor® 594 WGA was used to label plasma membranes (red) at a 1/200 dilution for 1h. DAPI was used to stain the cell nuclei (blue) at a concentration of 1.43µM.

Please note: All products are "FOR RESEARCH USE ONLY. NOT FOR USE IN DIAGNOSTIC PROCEDURES"

Our Abpromise to you: Quality guaranteed and expert technical support

- Replacement or refund for products not performing as stated on the datasheet
- Valid for 12 months from date of delivery
- Response to your inquiry within 24 hours
- We provide support in Chinese, English, French, German, Japanese and Spanish
- Extensive multi-media technical resources to help you
- We investigate all quality concerns to ensure our products perform to the highest standards

If the product does not perform as described on this datasheet, we will offer a refund or replacement. For full details of the Abpromise, please visit <https://www.abcam.co.jp/abpromise> or contact our technical team.

Terms and conditions

- Guarantee only valid for products bought direct from Abcam or one of our authorized distributors