


### Anti-Transferrin antibody [HTF-14] ab769

★☆☆☆☆ **1 Abreviews** **11 References** 画像数 3

#### 製品の概要

製品名	Anti-Transferrin antibody [HTF-14]
製品の詳細	Mouse monoclonal [HTF-14] to Transferrin
由来種	Mouse
特異性	This antibody recognizes an epitope located in the N-terminal domain of human transferrin.
アプリケーション	<b>適用あり:</b> ELISA, RIA, ICC, WB, Functional Studies, Sandwich ELISA, IP, IHC-P
種交差性	<b>交差種:</b> Human <b>交差が予測される動物種:</b> Rabbit, Pig  <b>非交差種:</b> Sheep, Horse, Cow, Dog, Carp
免疫原	Full length native protein (purified) (Pig).
ポジティブ・コントロール	WB: Human transferrin. IHC-P: Human Placenta
特記事項	<p>The Life Science industry has been in the grips of a reproducibility crisis for a number of years. Abcam is leading the way in addressing this with our range of recombinant monoclonal antibodies and knockout edited cell lines for gold-standard validation. Please check that this product meets your needs before purchasing.</p> <p>If you have any questions, special requirements or concerns, please send us an inquiry and/or contact our Support team ahead of purchase. Recommended alternatives for this product can be found below, along with publications, customer reviews and Q&amp;As</p>

#### 製品の特性

製品の状態	Liquid
保存方法	Shipped at 4°C. Store at +4°C short term (1-2 weeks). Upon delivery aliquot. Store at -20°C or -80°C. Avoid freeze / thaw cycle.
バッファー	pH: 7.40 Preservative: 0.097% Sodium azide Constituent: PBS
精製度	Proprietary Purification
特記事項 (精製)	Purified from ascites by sequential precipitation methods. Purity >95% by SDS-PAGE.
ポリ/モノ	モノクローナル
クローン名	HTF-14
ミエローマ	unknown

アイソタイプ	IgG1
軽鎖の種類	unknown

## アプリケーション

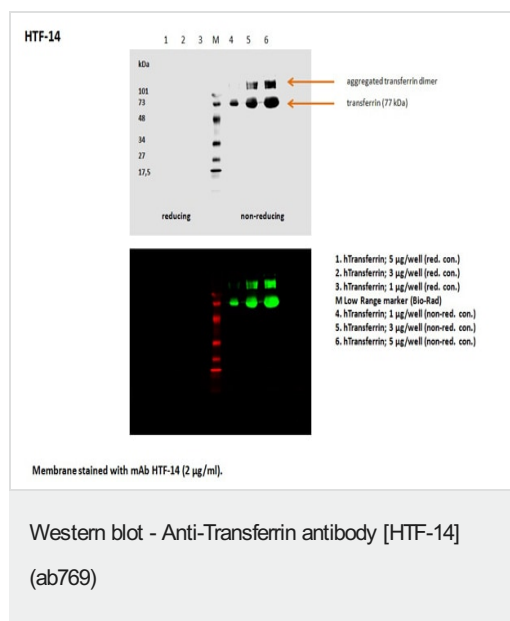
The Abpromise guarantee      Abpromise保証は、次のテスト済みアプリケーションにおけるab769の使用に適用されます  
 アプリケーションノートには、推奨の開始希釈率がありますが、適切な希釈率につきましてはご確認ください。

アプリケーション	Abreviews	特記事項
ELISA		Use at an assay dependent concentration.
RIA		Use at an assay dependent concentration.
ICC		Use at an assay dependent concentration.
WB	★☆☆☆☆ (1)	Use at an assay dependent concentration. Works best under non reducing conditions.
Functional Studies		Use at an assay dependent concentration. Effectively blocks the transferrin-transferrin receptor interactions.
Sandwich ELISA		Use a concentration of 1 µg/ml. For sandwich ELISA, use this antibody as Capture at 1 µg/ml with <b>ab9538</b> as Detection.
IP		Use at an assay dependent concentration.
IHC-P		Use a concentration of 10 µg/ml.

## ターゲット情報

機能	Transferrins are iron binding transport proteins which can bind two Fe(3+) ions in association with the binding of an anion, usually bicarbonate. It is responsible for the transport of iron from sites of absorption and heme degradation to those of storage and utilization. Serum transferrin may also have a further role in stimulating cell proliferation.
組織特異性	Expressed by the liver and secreted in plasma.
関連疾患	Defects in TF are the cause of atransferrinemia (ATRAF) [MIM:209300]. Atransferrinemia is rare autosomal recessive disorder characterized by iron overload and hypochromic anemia.
配列類似性	Belongs to the transferrin family. Contains 2 transferrin-like domains.
細胞内局在	Secreted.

## 画像



**All lanes** : Anti-Transferrin antibody [HTF-14] (ab769)

**Lane 1** : Human Transferrin – 8 µl (reducing conditions) at 5 µg

**Lane 2** : Human Transferrin – 5 µl (reducing conditions) at 3 µg

**Lane 3** : Human Transferrin – 3 µl (reducing conditions) at 1 µg

**Lane 4** : Human Transferrin – 3 µl (non reducing conditions) at 1 µg

**Lane 5** : Human Transferrin – 5 µl (non reducing conditions) at 3 µg

**Lane 6** : Human Transferrin – 8 µl (non reducing conditions) at 5 µg

The sample (commercial human transferrin) (1 µg/ml in 1x PBS) was mixed with 4x loading buffer (non reducing) or with Laemmli buffer (reducing) and warmed for 3 minutes.

Volume of sample: 5; 3; 1 µl of sample + 3; 2; 2 µl of buffer

SDS Page: 12% AA-gel, U=180V, 90 minutes, volume of loading sample: 8; 5; 3 µl

Marker – 3 µl

WB: Nitrocellulose membrane (8x5.5 cm), I=35mA, 90minutes

Detection:

Blocking solution: 1xPBS/5% BSA, 4°C, overnight

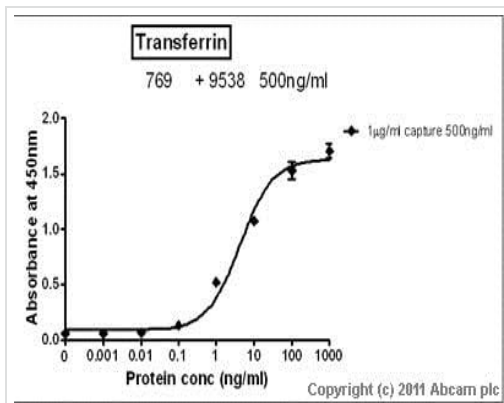
Primary Ab: membrane was incubated in 5 ml DMEM/10% FTS + 10 µl HTF-14 (primary Ab) (60 minutes, room temperature)

Washing solution: 1x PBS/0.1% Tween

Secondary Ab: IRDye® 800CW Goat anti-mouse IgG1-specific, dilution 1/5000, diluting solution – 5% BSA/1x PBS, incubation for 60 minutes, low temperature.

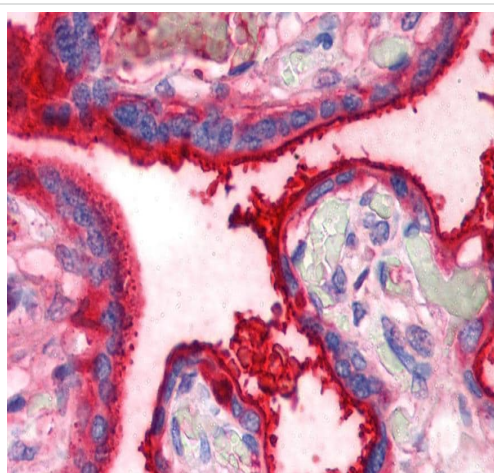
Detection: Li-COR odyssey

No reducing agent should be added to the sample buffer. The sample can be denatured and processed by common Western blotting protocols, but the disulfide bonds must not be reduced.



Standard curve for Transferrin (Analyte: **ab83560**); dilution range 1pg/ml to 1µg/ml using Capture Antibody Mouse monoclonal [HTF-14] to Transferrin (ab769) at 1µg/ml and Detector Antibody Rabbit polyclonal to Transferrin (**ab9538**) at 0.5µg/ml.

Sandwich ELISA - Anti-Transferrin antibody [HTF-14] (ab769)



Immunohistochemistry staining of human placenta (paraffin sections) using ab769 10 µg/ml

Immunohistochemistry (Formalin/PFA-fixed paraffin-embedded sections) - Anti-Transferrin antibody [HTF-14] (ab769)

**Please note:** All products are "FOR RESEARCH USE ONLY. NOT FOR USE IN DIAGNOSTIC PROCEDURES"

### Our Abpromise to you: Quality guaranteed and expert technical support

- Replacement or refund for products not performing as stated on the datasheet
- Valid for 12 months from date of delivery
- Response to your inquiry within 24 hours
- We provide support in Chinese, English, French, German, Japanese and Spanish
- Extensive multi-media technical resources to help you
- We investigate all quality concerns to ensure our products perform to the highest standards

If the product does not perform as described on this datasheet, we will offer a refund or replacement. For full details of the Abpromise, please visit <https://www.abcam.co.jp/abpromise> or contact our technical team.

## Terms and conditions

---

- Guarantee only valid for products bought direct from Abcam or one of our authorized distributors