

# Anti-TRAF6 antibody ab62488

**5 References** [画像数 3](#)

### 製品の概要

---

製品名	Anti-TRAF6 antibody
製品の詳細	Rabbit polyclonal to TRAF6
由来種	Rabbit
アプリケーション	<b>適用あり:</b> WB, ICC, ICC/IF
種交差性	<b>交差種:</b> Human
免疫原	A 14 amino acid synthetic peptide from near the C terminus of human TRAF6
ポジティブ・コントロール	PC3 cell lysate and K562 cells
特記事項	<p>The Life Science industry has been in the grips of a reproducibility crisis for a number of years. Abcam is leading the way in addressing this with our range of recombinant monoclonal antibodies and knockout edited cell lines for gold-standard validation. Please check that this product meets your needs before purchasing.</p> <p>If you have any questions, special requirements or concerns, please send us an inquiry and/or contact our Support team ahead of purchase. Recommended alternatives for this product can be found below, along with publications, customer reviews and Q&amp;As</p>

### 製品の特性

---

製品の状態	Liquid
保存方法	Shipped at 4°C. Store at +4°C.
バッファー	pH: 7.2 Preservative: 0.02% Sodium azide Constituent: PBS
精製度	Ion Exchange Chromatography
ポリ/モノ	ポリクローナル
アイソタイプ	IgG

### アプリケーション

---

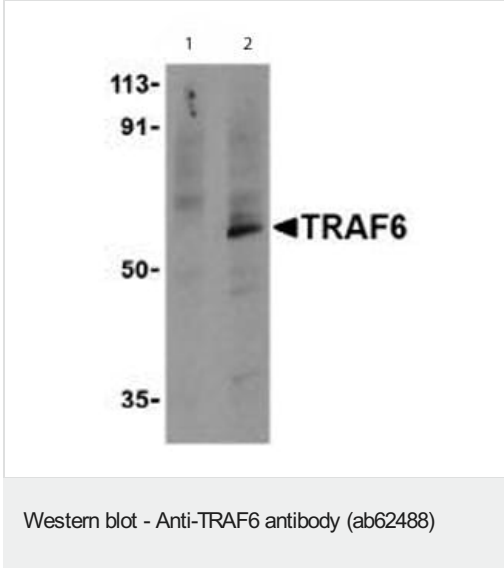
**The Abpromise guarantee**      **Abpromise保証は、次のテスト済みアプリケーションにおけるab62488の使用に適用されます**  
アプリケーションノートには、推奨の開始希釈率がありますが、適切な希釈率につきましてはご検討ください。

アプリケーション	Abreviews	特記事項
WB		Use a concentration of 1 - 2 µg/ml. Detects a band of approximately 63 kDa (predicted molecular weight: 63 kDa).
ICC		Use a concentration of 0.5 - 20 µg/ml.
ICC/IF		Use a concentration of 0.5 - 20 µg/ml.

## ターゲット情報

<b>機能</b>	E3 ubiquitin ligase that, together with UBE2N and UBE2V1, mediates the synthesis of 'Lys-63'-linked-polyubiquitin chains conjugated to proteins, such as IKBKG, AKT1 and AKT2. Also mediates ubiquitination of free/unanchored polyubiquitin chain that leads to MAP3K7 activation. Leads to the activation of NF-kappa-B and JUN. May be essential for the formation of functional osteoclasts. Seems to also play a role in dendritic cells (DCs) maturation and/or activation. Represses c-Myb-mediated transactivation, in B lymphocytes. Adapter protein that seems to play a role in signal transduction initiated via TNF receptor, IL-1 receptor and IL-17 receptor.
<b>組織特異性</b>	Expressed in heart, brain, placenta, lung, liver, skeletal muscle, kidney and pancreas.
<b>パスウェイ</b>	Protein modification; protein ubiquitination.
<b>配列類似性</b>	Belongs to the TNF receptor-associated factor family. A subfamily. Contains 1 MATH domain. Contains 1 RING-type zinc finger. Contains 2 TRAF-type zinc fingers.
<b>ドメイン</b>	The coiled coil domain mediates homo- and hetero-oligomerization. The MATH/TRAF domain binds to receptor cytoplasmic domains.
<b>翻訳後修飾</b>	Sumoylated on Lys-124, Lys-142 and Lys-453 by SUMO1. Polyubiquitinated on Lys-124; after cell stimulation with IL-1-beta or TGF-beta. This ligand-induced cell stimulation leads to dimerization/oligomerization of TRAF6 molecules, followed by auto-ubiquitination which involves UBE2N and UBE2V1 and leads to TRAF6 activation. This 'Lys-63' site-specific poly-ubiquitination appears to be associated with the activation of signaling molecules. Endogenous autoubiquitination occurs only for the cytoplasmic form.
<b>細胞内局在</b>	Cytoplasm. Cytoplasm > cell cortex. Nucleus. Found in the nuclei of some aggressive B-cell lymphoma cell lines as well as in the nuclei of both resting and activated T-and B-lymphocytes. Found in punctate nuclear body protein complexes. Ubiquitination may occur in the cytoplasm and sumoylation in the nucleus.

## 画像



**All lanes :** Anti-TRAF6 antibody (ab62488) at 1 µg/ml

**Lane 1 :** PC3 cell lysates, with 1 µg blocking peptide

**Lane 2 :** PC3 cell lysates, without blocking peptide

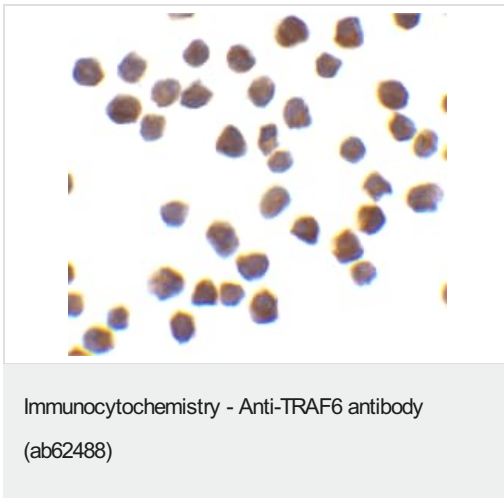
Lysates/proteins at 15 µg per lane.

**Secondary**

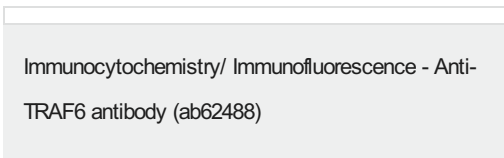
**All lanes :** Anti-rabbit IgG

**Predicted band size:** 63 kDa

**Observed band size:** 63 kDa



Immunocytochemistry of TRAF6 in K562 cells with ab62488 antibody at 0.5 µg/ml.



Immunofluorescence of TRAF6 in K562 cells using ab62488 at 20 µg/ml.

**Please note:** All products are "FOR RESEARCH USE ONLY. NOT FOR USE IN DIAGNOSTIC PROCEDURES"

**Our Abpromise to you: Quality guaranteed and expert technical support**

- Replacement or refund for products not performing as stated on the datasheet
- Valid for 12 months from date of delivery

- Response to your inquiry within 24 hours
- We provide support in Chinese, English, French, German, Japanese and Spanish
- Extensive multi-media technical resources to help you
- We investigate all quality concerns to ensure our products perform to the highest standards

If the product does not perform as described on this datasheet, we will offer a refund or replacement. For full details of the Abpromise, please visit <https://www.abcam.co.jp/abpromise> or contact our technical team.

### **Terms and conditions**

---

- Guarantee only valid for products bought direct from Abcam or one of our authorized distributors