


Anti-Topoisomerase II alpha antibody ab12318

★★★★★ **1 Abreviews** **15 References** 画像数 **2**

製品の概要

製品名	Anti-Topoisomerase II alpha antibody
製品の詳細	Rabbit polyclonal to Topoisomerase II alpha
由来種	Rabbit
アプリケーション	適用あり: IHC-P, IP
種交差性	交差種: Human 交差が予測される動物種: Mouse, Chimpanzee, Rhesus monkey, Gorilla, Orangutan 
免疫原	Synthetic peptide representing a portion of human DNA topoisomerase II, alpha isozyme encoded within exon 35 (LocusLink ID 7153).
ポジティブ・コントロール	HeLa cells. IHC-P: FFPE human testis tissue sections.
特記事項	<p>The Life Science industry has been in the grips of a reproducibility crisis for a number of years. Abcam is leading the way in addressing this with our range of recombinant monoclonal antibodies and knockout edited cell lines for gold-standard validation. Please check that this product meets your needs before purchasing.</p> <p>If you have any questions, special requirements or concerns, please send us an inquiry and/or contact our Support team ahead of purchase. Recommended alternatives for this product can be found below, along with publications, customer reviews and Q&As</p>

製品の特性

製品の状態	Liquid
保存方法	Shipped at 4°C. Upon delivery aliquot and store at -20°C. Avoid freeze / thaw cycles.
バッファー	<p>pH: 7</p> <p>Preservative: 0.1% Sodium azide</p> <p>Constituents: 0.021% PBS, 1.764% Sodium citrate, 1.815% Tris</p>
精製度	Immunogen affinity purified
特記事項(精製)	Purified using the peptide immobilized on solid support.
ポリ/モノ	ポリクローナル
アイソタイプ	IgG

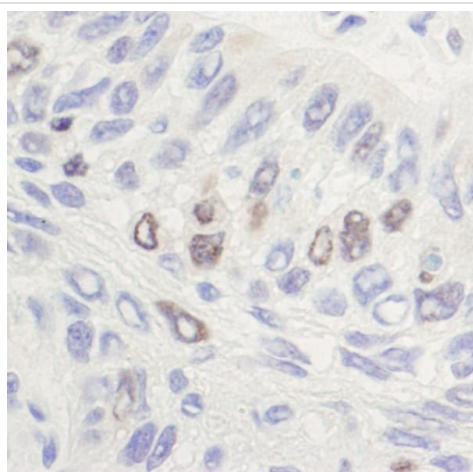
The Abpromise guarantee **Abpromise保証は、** 次のテスト済みアプリケーションにおけるab12318の使用に適用されます
アプリケーションノートには、推奨の開始希釈率がありますが、適切な希釈率につきましてはご検討ください。

アプリケーション	Abreviews	特記事項
IHC-P		1/500 - 1/2000. Perform heat mediated antigen retrieval with citrate buffer pH 6 before commencing with IHC staining protocol.
IP		Use at 2-10 µg/mg of lysate.

ターゲット情報

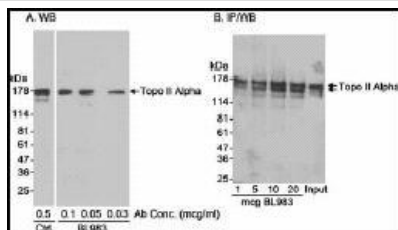
機能	Control of topological states of DNA by transient breakage and subsequent rejoining of DNA strands. Topoisomerase II makes double-strand breaks.
配列類似性	Belongs to the type II topoisomerase family.
翻訳後修飾	Phosphorylation has no effect on catalytic activity.
細胞内局在	Cytoplasm. Nucleus > nucleoplasm. Generally located in the nucleoplasm.

画像



Immunohistochemistry (Formalin/PFA-fixed paraffin-embedded sections) analysis of human laryngeal squamous cell carcinoma labelling Topoisomerase II alpha with ab12318 at 1/1000 (1µg/ml).
Detection: DAB.

Immunohistochemistry (Formalin/PFA-fixed paraffin-embedded sections) - Anti-Topoisomerase II alpha antibody (ab12318)



Immunoprecipitation - Anti-Topoisomerase II alpha antibody (ab12318)

Detection of Human Topo II Alpha by Western Blot and Immunoprecipitation.

Samples:

Whole cell lysate (25 mcg/lane for A; 0.5 mg for IP in B; 25 mcg for Input in B) from HeLa cells. *Antibodies:* Affinity purified rabbit anti-Topo II alpha antibody BL983 used at the indicated concentrations for WB (A) and IP (B). Control antibody (Ctrl. in A) and antibody for WB of immunoprecipitated Topo II alpha was a monoclonal antibody to Topo II alpha from another source. *Detection:* Chemiluminescence with exposure times of 5 minutes (A) or 30 seconds (B).

Please note: All products are "FOR RESEARCH USE ONLY. NOT FOR USE IN DIAGNOSTIC PROCEDURES"

Our Abpromise to you: Quality guaranteed and expert technical support

- Replacement or refund for products not performing as stated on the datasheet
- Valid for 12 months from date of delivery
- Response to your inquiry within 24 hours
- We provide support in Chinese, English, French, German, Japanese and Spanish
- Extensive multi-media technical resources to help you
- We investigate all quality concerns to ensure our products perform to the highest standards

If the product does not perform as described on this datasheet, we will offer a refund or replacement. For full details of the Abpromise, please visit <https://www.abcam.co.jp/abpromise> or contact our technical team.

Terms and conditions

- Guarantee only valid for products bought direct from Abcam or one of our authorized distributors