

# Anti-TOMM20 antibody [EPR15581-54] - Mitochondrial Marker ab186735

リコンビナント RabMAb

★★★★★ **8 Abreviews** **115 References** 画像数 12

### 製品の概要

製品名	Anti-TOMM20 antibody [EPR15581-54] - Mitochondrial Marker
製品の詳細	Rabbit monoclonal [EPR15581-54] to TOMM20 - Mitochondrial Marker
由来種	Rabbit
アプリケーション	<b>適用あり:</b> Flow Cyt (Intra), ICC/IF, WB, IHC-P, IHC-Fr
種交差性	<b>交差種:</b> Mouse, Rat, Human
免疫原	Recombinant fragment. This information is proprietary to Abcam and/or its suppliers.
ポジティブ・コントロール	WB: HepG2, HeLa, SH-SY5Y, PC-12 and NIH 3T3 cell lysates; IHC-P: Human ovarian carcinoma and mouse cardiac muscle tissues; ICC/IF: HeLa cells; Flow Cyt (intra): HeLa cells; IHC-Fr: Mouse cardiac and small intestine tissues.
特記事項	<p>This product is a recombinant monoclonal antibody, which offers several advantages including:</p> <ul style="list-style-type: none"><li>- High batch-to-batch consistency and reproducibility</li><li>- Improved sensitivity and specificity</li><li>- Long-term security of supply</li><li>- Animal-free production</li></ul> <p>For more information <a href="#">see here</a>.</p> <p>Our RabMAb<sup>®</sup> technology is a patented hybridoma-based technology for making rabbit monoclonal antibodies. For details on our patents, please refer to <a href="#">RabMAb<sup>®</sup> patents</a>.</p>

### 製品の特性

製品の状態	Liquid
保存方法	Shipped at 4°C. Store at +4°C short term (1-2 weeks). Upon delivery aliquot. Store at -20°C long term. Avoid freeze / thaw cycle.
バッファー	pH: 7.2 Preservative: 0.01% Sodium azide Constituents: PBS, 40% Glycerol (glycerin, glycerine), 0.05% BSA
精製度	Protein A purified
ポリ/モノ	モノクローナル

クローン名                   EPR15581-54  
アイソタイプ                 IgG

#### アプリケーション

**The Abpromise guarantee**       **Abpromise保証は、**次のテスト済みアプリケーションにおけるab186735の使用に適用され  
アプリケーションノートには、推奨の開始希釈率がありますが、適切な希釈率につきましてはご検討ください。

アプリケーション	Abreviews	特記事項
Flow Cyt (Intra)		1/90. <b>ab172730</b> - Rabbit monoclonal IgG, is suitable for use as an isotype control with this antibody.
ICC/IF	★★★★★ (5)	1/250.
WB	★★★★★ (2)	1/1000 - 1/10000. Detects a band of approximately 16 kDa (predicted molecular weight: 16 kDa).
IHC-P		1/50 - 1/100. Perform heat mediated antigen retrieval with Tris/EDTA buffer pH 9.0 before commencing with IHC staining protocol.
IHC-Fr	★★★★★ (1)	1/50. Heat mediated antigen retrieval using sodium citrate buffer (10mM citrate pH 6.0 + 0.05% Tween-20)

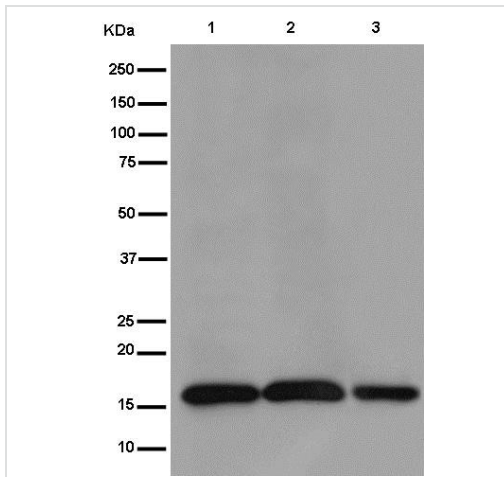
#### ターゲット情報

**機能**                                   Central component of the receptor complex responsible for the recognition and translocation of cytosolically synthesized mitochondrial preproteins. Together with TOM22 functions as the transit peptide receptor at the surface of the mitochondrion outer membrane and facilitates the movement of preproteins into the TOM40 translocation pore.

**配列類似性**                           Belongs to the Tom20 family.

**細胞内局在**                           Mitochondrion outer membrane.

#### 画像



Western blot - Anti-TOMM20 antibody [EPR15581-54] - Mitochondrial Marker (ab186735)

**All lanes :** Anti-TOMM20 antibody [EPR15581-54] - Mitochondrial Marker (ab186735) at 1/10000 dilution

**Lane 1 :** HepG2 (human liver hepatocellular carcinoma cell line) cell lysate

**Lane 2 :** HeLa (human epithelial cell line from cervix adenocarcinoma) cell lysate

**Lane 3 :** SH-SY5Y (human neuroblastoma cell line from bone marrow) cell lysate

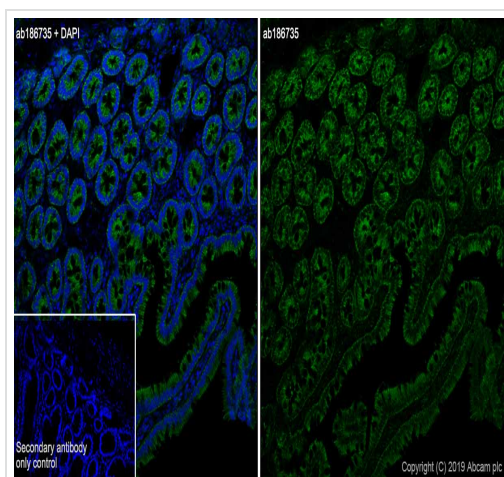
Lysates/proteins at 20 µg per lane.

#### Secondary

**All lanes :** Goat Anti-Rabbit IgG, (H+L), Peroxidase conjugate at 1/1000 dilution

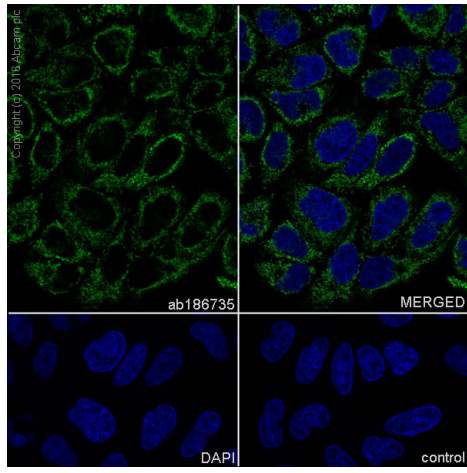
**Predicted band size:** 16 kDa

**Observed band size:** 16 kDa



Immunohistochemistry (Frozen sections) - Anti-TOMM20 antibody [EPR15581-54] - Mitochondrial Marker (ab186735)

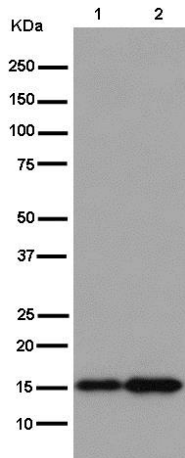
Immunohistochemistry (Frozen sections) analysis of rat small intestine tissue sections labeling TOMM20 with Purified ab186735 at 1/50 (1.9 µg/ml). Heat mediated antigen retrieval using sodium citrate buffer (10mM citrate pH 6.0 + 0.05% Tween-20). Goat anti rabbit IgG (Alexa Fluor® 488, **ab150077**) was used as the secondary antibody. Negative control: PBS instead of the primary antibody. DAPI was used as a counterstain.



Immunocytochemistry/ Immunofluorescence - Anti-TOMM20 antibody [EPR15581-54] - Mitochondrial Marker (ab186735)

ab186735 staining TOMM20 in HeLa (human epithelial cell line from cervix adenocarcinoma) cells by ICC/IF (Immunocytochemistry/immunofluorescence). Cells were fixed with 4% Paraformaldehyde and permeabilized with 0.1% Triton X-100. Samples were incubated with primary antibody at a dilution of 1/500. A goat anti rabbit IgG (Alexa Fluor® 488) (**ab150077**) was used as the secondary antibody at a dilution of 1/1000. DAPI was used as a nuclear counterstain.

Control: PBS only



Western blot - Anti-TOMM20 antibody [EPR15581-54] - Mitochondrial Marker (ab186735)

**All lanes** : Anti-TOMM20 antibody [EPR15581-54] - Mitochondrial Marker (ab186735) at 1/2000 dilution

**Lane 1** : PC-12 (rat adrenal gland pheochromocytoma cell line) cell lysate

**Lane 2** : NIH/3T3 (mouse embryo fibroblast cell line) cell lysate

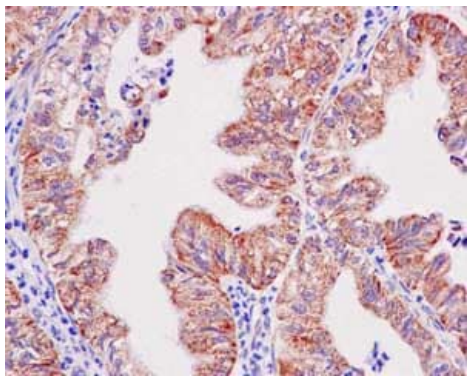
Lysates/proteins at 10 µg per lane.

**Secondary**

**All lanes** : Goat Anti-Rabbit IgG, (H+L), Peroxidase conjugate at 1/1000 dilution

**Predicted band size:** 16 kDa

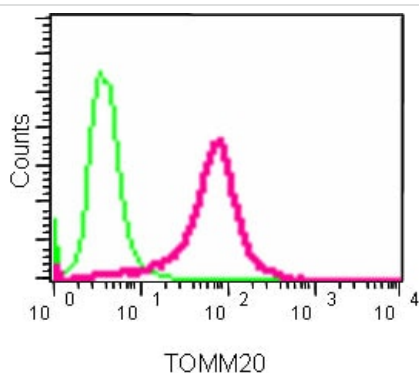
**Observed band size:** 16 kDa



Immunohistochemistry (Formalin/PFA-fixed paraffin-embedded sections) - Anti-TOMM20 antibody [EPR15581-54] - Mitochondrial Marker (ab186735)

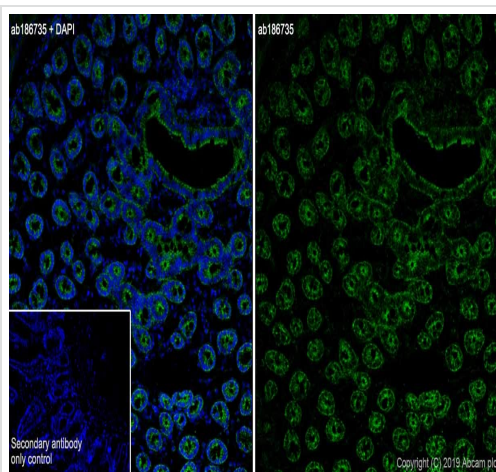
Immunohistochemical analysis of paraffin-embedded Human ovarian carcinoma tissue labeling TOMM20 with ab186735 at 1/100 dilution followed by prediluted HRP Polymer for Rabbit IgG. Counter stained with Hematoxylin.

Perform heat mediated antigen retrieval with EDTA buffer pH 9 before commencing with IHC staining protocol.



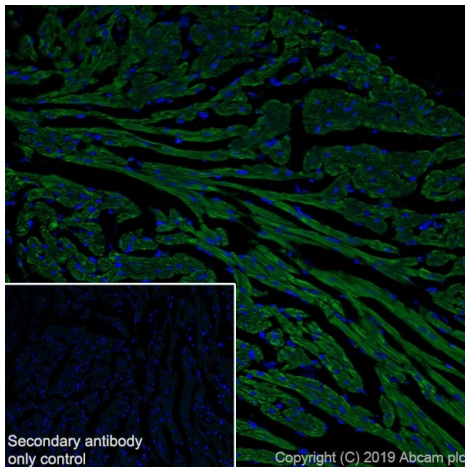
Flow Cytometry (Intracellular) - Anti-TOMM20 antibody [EPR15581-54] - Mitochondrial Marker (ab186735)

Intracellular Flow Cytometry analysis of TOMM20 expression in paraformaldehyde-fixed HeLa (human epithelial cell line from cervix adenocarcinoma) cells cells using ab186735 at 1/90 dilution (red) and a rabbit IgG as negative control (green).



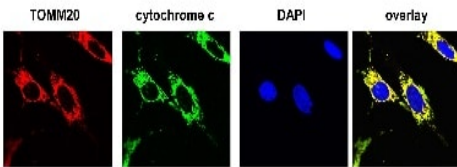
Immunohistochemistry (Frozen sections) - Anti-TOMM20 antibody [EPR15581-54] - Mitochondrial Marker (ab186735)

Immunohistochemistry (Frozen sections) analysis of mouse small intestine tissue sections labeling TOMM20 with Purified ab186735 at 1/50 (1.9 µg/ml). Heat mediated antigen retrieval using sodium citrate buffer (10mM citrate pH 6.0 + 0.05% Tween-20). Goat anti rabbit IgG (Alexa Fluor® 488, [ab150077](#)) was used as the secondary antibody. Negative control: PBS instead of the primary antibody. DAPI was used as a counterstain.



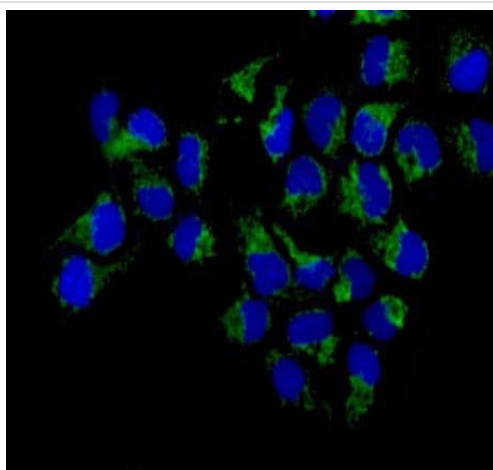
Immunohistochemistry (Frozen sections) - Anti-TOMM20 antibody [EPR15581-54] - Mitochondrial Marker (ab186735)

Immunohistochemistry (Frozen sections) analysis of mouse cardiac muscle tissue sections labeling TOMM20 with Purified ab186735 at 1/50 (1.9 µg/ml). Heat mediated antigen retrieval using sodium citrate buffer (10mM citrate pH 6.0 + 0.05% Tween-20). Goat anti rabbit IgG (Alexa Fluor® 488, **ab150077**) was used as the secondary antibody. Negative control: PBS instead of the primary antibody. DAPI was used as a counterstain.



Immunocytochemistry/ Immunofluorescence - Anti-TOMM20 antibody [EPR15581-54] - Mitochondrial Marker (ab186735)

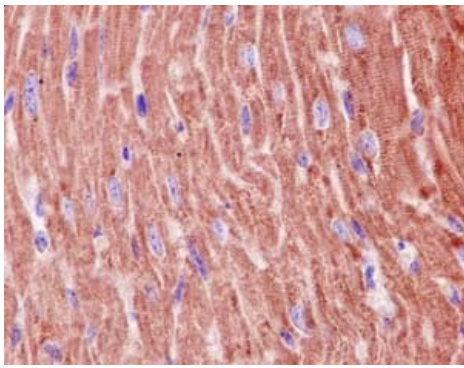
Paraformaldehyde-fixed, 0.2% Triton X-100 permeabilized human non-small cell lung carcinoma cells labeling TOMM20 using ab186735 at 1/400 dilution for 3 hours at room temperature. A Goat anti-Rabbit IgG (H&L) AlexaFluor® was used as secondary antibody at 1/1000 dilution.



Immunocytochemistry/ Immunofluorescence - Anti-TOMM20 antibody [EPR15581-54] - Mitochondrial Marker (ab186735)

Immunofluorescence analysis of paraformaldehyde-fixed HeLa (human epithelial cell line from cervix adenocarcinoma) cells, labeling TOMM20 (green) with ab186735 at 1/250 dilution. Alexa Fluor®488-conjugated goat anti-rabbit IgG was used as a secondary antibody at 1/200 dilution. Nuclei were counterstained with DAPI (blue).





Immunohistochemistry (Formalin/PFA-fixed paraffin-embedded sections) - Anti-TOMM20 antibody [EPR15581-54] - Mitochondrial Marker (ab186735)

Immunohistochemical analysis of paraffin-embedded mouse cardiac muscle tissue labeling TOMM20 with ab186735 at 1/100 dilution followed by prediluted HRP Polymer for Rabbit IgG. Counter stained with Hematoxylin.

Perform heat mediated antigen retrieval with EDTA buffer pH 9 before commencing with IHC staining protocol.

### Why choose a recombinant antibody?



Anti-TOMM20 antibody [EPR15581-54] - Mitochondrial Marker (ab186735)

**Please note:** All products are "FOR RESEARCH USE ONLY. NOT FOR USE IN DIAGNOSTIC PROCEDURES"

### Our Abpromise to you: Quality guaranteed and expert technical support

- Replacement or refund for products not performing as stated on the datasheet
- Valid for 12 months from date of delivery
- Response to your inquiry within 24 hours
- We provide support in Chinese, English, French, German, Japanese and Spanish
- Extensive multi-media technical resources to help you
- We investigate all quality concerns to ensure our products perform to the highest standards

If the product does not perform as described on this datasheet, we will offer a refund or replacement. For full details of the Abpromise, please visit <https://www.abcam.co.jp/abpromise> or contact our technical team.

## Terms and conditions

---

- Guarantee only valid for products bought direct from Abcam or one of our authorized distributors