



Anti-TMTC1 antibody ab272573

画像数 5

製品の概要

製品名	Anti-TMTC1 antibody
製品の詳細	Rabbit polyclonal to TMTC1
由来種	Rabbit
アプリケーション	適用あり: ICC/IF, WB, IHC-P
種交差性	交差種: Human
免疫原	Recombinant fragment corresponding to Human TMTC1 aa 200-350. Database link: Q8IUR5
	<div>  Run BLAST with </div> <div>  Run BLAST with </div>
ポジティブ・コントロール	WB: HeLa cell line. IHC-P: Human kidney, endometrium, prostate tissues. ICC/IF: U-251 MG sp.
特記事項	<p>The Life Science industry has been in the grips of a reproducibility crisis for a number of years. Abcam is leading the way in addressing this with our range of recombinant monoclonal antibodies and knockout edited cell lines for gold-standard validation. Please check that this product meets your needs before purchasing.</p> <p>If you have any questions, special requirements or concerns, please send us an inquiry and/or contact our Support team ahead of purchase. Recommended alternatives for this product can be found below, along with publications, customer reviews and Q&As</p>

製品の特性

製品の状態	Liquid
保存方法	Shipped at 4°C. Store at +4°C short term (1-2 weeks). Upon delivery aliquot. Store at -20°C long term. Avoid freeze / thaw cycle.
バッファー	pH: 7.20 Preservative: 0.02% Sodium azide Constituents: 40% Glycerol (glycerin, glycerine), PBS
精製度	Immunogen affinity purified
ポリ/モノ	ポリクローナル
アイソタイプ	IgG

アプリケーション

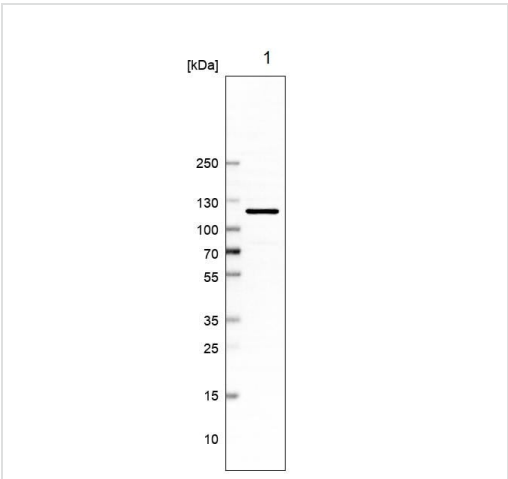
The Abpromise guarantee **Abpromise保証は、**次のテスト済みアプリケーションにおけるab272573の使用に適用されます
アプリケーションノートには、推奨の開始希釈率がありますが、適切な希釈率につきましてはご検討ください。

アプリケーション	Abreviews	特記事項
ICC/IF		Use a concentration of 0.25 - 2 µg/ml.
WB		Use a concentration of 0.04 - 0.4 µg/ml.
IHC-P		1/50 - 1/200. Perform heat mediated antigen retrieval with citrate buffer pH 6 before commencing with IHC staining protocol.

ターゲット情報

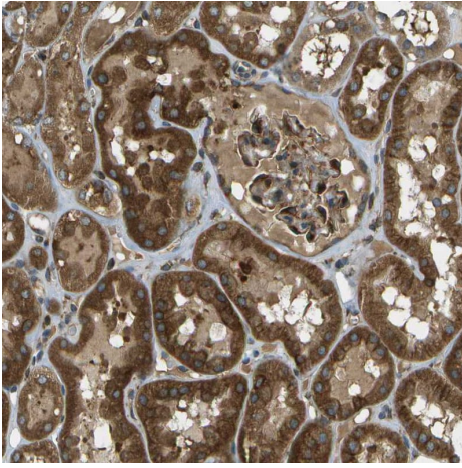
関連性	TMTC1 belongs to the TMTC family. Four isoforms of the human protein are produced by alternative splicing. The function of this protein is currently unknown.
細胞内局在	Membrane; Multi-pass membrane protein

画像



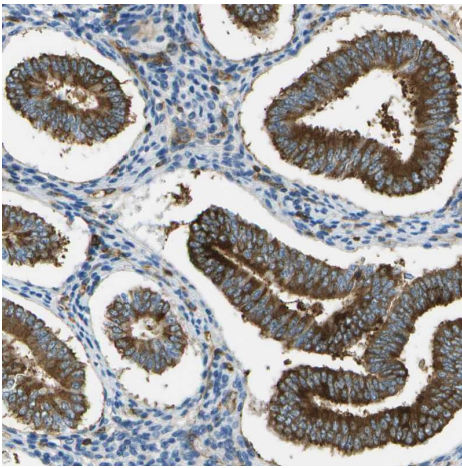
Western blot - Anti-TMTC1 antibody (ab272573)

Anti-TMTC1 antibody (ab272573) at 0.4 µg/ml + HeLa (Human epithelial cell line from cervix adenocarcinoma) whole cell lysate



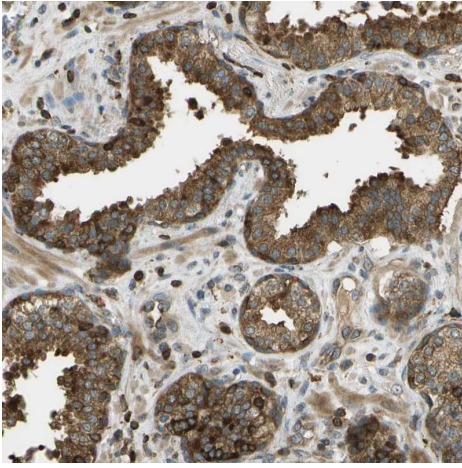
Immunohistochemical analysis of human kidney tissue labeling TMTC1 with ab272573 at 1/50 dilution.

Immunohistochemistry (Formalin/PFA-fixed paraffin-embedded sections) - Anti-TMTC1 antibody (ab272573)



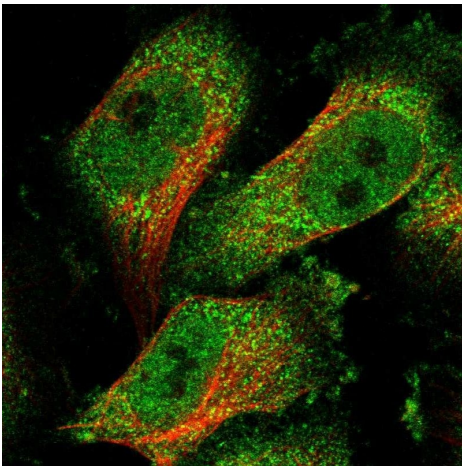
Immunohistochemical analysis of human endometrium tissue labeling TMTC1 with ab272573 at 1/50 dilution.

Immunohistochemistry (Formalin/PFA-fixed paraffin-embedded sections) - Anti-TMTC1 antibody (ab272573)



Immunohistochemistry (Formalin/PFA-fixed paraffin-embedded sections) - Anti-TMTC1 antibody (ab272573)

Immunohistochemical analysis of human prostate tissue labeling TMTC1 with ab272573 at 1/50 dilution.



Immunocytochemistry/ Immunofluorescence - Anti-TMTC1 antibody (ab272573)

PFA fixed, Triton X-100 permeabilized human cell line U-251 MG sp labeling TMTC1 (green) using ab272573 at 2 µg/ml in ICC/IF analysis.

Please note: All products are "FOR RESEARCH USE ONLY. NOT FOR USE IN DIAGNOSTIC PROCEDURES"

Our Abpromise to you: Quality guaranteed and expert technical support

- Replacement or refund for products not performing as stated on the datasheet
- Valid for 12 months from date of delivery
- Response to your inquiry within 24 hours
- We provide support in Chinese, English, French, German, Japanese and Spanish
- Extensive multi-media technical resources to help you
- We investigate all quality concerns to ensure our products perform to the highest standards

If the product does not perform as described on this datasheet, we will offer a refund or replacement. For full details of the Abpromise, please visit <https://www.abcam.co.jp/abpromise> or contact our technical team.

Terms and conditions

- Guarantee only valid for products bought direct from Abcam or one of our authorized distributors