

Anti-TMPRSS11D antibody ab127031

1 Abbreviations 7 References 画像数 2

医薬用外劇物

製品の概要

製品名	Anti-TMPRSS11D antibody
製品の詳細	Rabbit polyclonal to TMPRSS11D
由来種	Rabbit
アプリケーション	適用あり: WB, IHC-P
種交差性	交差種: Human
免疫原	Recombinant fragment, corresponding to a region within amino acids 152-348 of Human TMPRSS11D (UniProt O60235).
ポジティブ・コントロール	HepG2 whole cell lysate (ab7900); Human breast carcinoma tissue
特記事項	<p>Store undiluted.</p> <p>The Life Science industry has been in the grips of a reproducibility crisis for a number of years. Abcam is leading the way in addressing this with our range of recombinant monoclonal antibodies and knockout edited cell lines for gold-standard validation. Please check that this product meets your needs before purchasing.</p> <p>If you have any questions, special requirements or concerns, please send us an inquiry and/or contact our Support team ahead of purchase. Recommended alternatives for this product can be found below, along with publications, customer reviews and Q&As</p>

製品の特性

製品の状態	Liquid
保存方法	Shipped at 4°C. Upon delivery aliquot. Store at -20°C or -80°C. Avoid freeze / thaw cycle.
バッファー	<p>pH: 7.00</p> <p>Preservative: 0.01% Thimerosal (merthiolate)</p> <p>Constituents: 1.21% Tris, 0.75% Glycine, 20% Glycerol (glycerin, glycerine)</p>
精製度	Immunogen affinity purified
ポリ/モノ	ポリクローナル
アイソタイプ	IgG

アプリケーション

The Abpromise guarantee

Abpromise保証は、次のテスト済みアプリケーションにおけるab127031の使用に適用されます

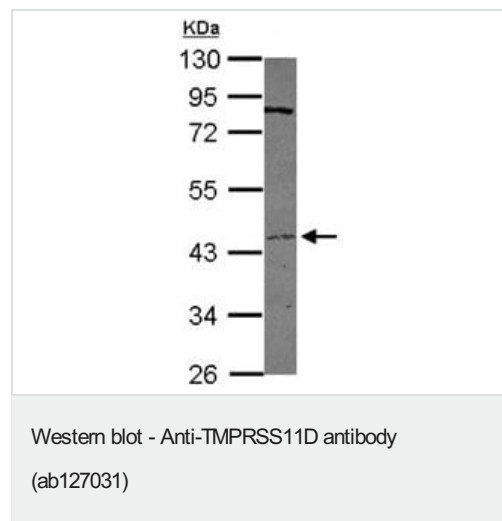
アプリケーションノートには、推奨の開始希釈率がありますが、適切な希釈率につきましてはご確認ください。

アプリケーション	Abreviews	特記事項
WB		1/500 - 1/3000. Predicted molecular weight: 46 kDa.
IHC-P		1/100 - 1/500. Perform heat mediated antigen retrieval before commencing with IHC staining protocol.

ターゲット情報

機能	May play some biological role in the host defense system on the mucous membrane independently of or in cooperation with other substances in airway mucous or bronchial secretions.
組織特異性	Located in the cells of the submucosal serous glands of the bronchi and trachea.
配列類似性	Belongs to the peptidase S1 family. Contains 1 peptidase S1 domain. Contains 1 SEA domain.
細胞内局在	Secreted. Activated by cleavage and secreted and Cell membrane. Activated by cleavage and secreted.

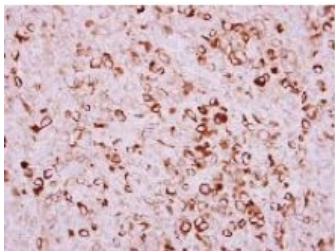
画像



Anti-TMPRSS11D antibody (ab127031) at 1/500 dilution + HepG2 whole cell lysate at 30 µg

Predicted band size: 46 kDa

10% SDS-PAGE



ab127031, at 1/250 dilution, staining TMPRSS11D in paraffin-embedded Human breast carcinoma tissue by Immunohistochemistry.

Immunohistochemistry (Formalin/PFA-fixed paraffin-embedded sections) - Anti-TMPRSS11D antibody (ab127031)

Please note: All products are "FOR RESEARCH USE ONLY. NOT FOR USE IN DIAGNOSTIC PROCEDURES"

Our Abpromise to you: Quality guaranteed and expert technical support

- Replacement or refund for products not performing as stated on the datasheet
- Valid for 12 months from date of delivery
- Response to your inquiry within 24 hours
- We provide support in Chinese, English, French, German, Japanese and Spanish
- Extensive multi-media technical resources to help you
- We investigate all quality concerns to ensure our products perform to the highest standards

If the product does not perform as described on this datasheet, we will offer a refund or replacement. For full details of the Abpromise, please visit <https://www.abcam.co.jp/abpromise> or contact our technical team.

Terms and conditions

- Guarantee only valid for products bought direct from Abcam or one of our authorized distributors