

Anti-TLR5 antibody ab37071

1 References [画像数 3](#)

製品の概要

製品名	Anti-TLR5 antibody
製品の詳細	Rabbit polyclonal to TLR5
由来種	Rabbit
アプリケーション	適用あり: ICC/IF, WB
種交差性	交差種: Human
免疫原	Synthetic peptide corresponding to 15 amino acids near the carboxy terminus of human TLR5.
ポジティブ・コントロール	THP 1 cell lysate
特記事項	<p>The Life Science industry has been in the grips of a reproducibility crisis for a number of years. Abcam is leading the way in addressing this with our range of recombinant monoclonal antibodies and knockout edited cell lines for gold-standard validation. Please check that this product meets your needs before purchasing.</p> <p>If you have any questions, special requirements or concerns, please send us an inquiry and/or contact our Support team ahead of purchase. Recommended alternatives for this product can be found below, along with publications, customer reviews and Q&As</p>

製品の特性

製品の状態	Liquid
保存方法	Shipped at 4°C. Store at +4°C.
バッファー	pH: 7.2 Preservative: 0.02% Sodium azide Constituent: PBS
精製度	Protein A purified
特記事項(精製)	Purified by affinity chromatography
ポリモノ	ポリクローナル
アイソタイプ	IgG

アプリケーション

The Abpromise guarantee

Abpromise保証は、次のテスト済みアプリケーションにおけるab37071の使用に適用されます

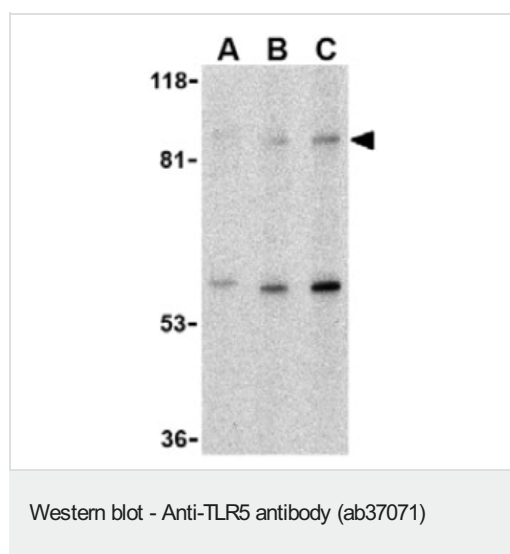
アプリケーションノートには、推奨の開始希釈率がありますが、適切な希釈率につきましてはご確認ください。

アプリケーション	Abreviews	特記事項
ICC/IF		Use a concentration of 10 µg/ml.
WB		Use a concentration of 1 - 2 µg/ml. Predicted molecular weight: 97 kDa. Can be blocked with Active human TLR5 peptide (ab40018) .

ターゲット情報

機能	Participates in the innate immune response to microbial agents. Mediates detection of bacterial flagellins. Acts via MYD88 and TRAF6, leading to NF-kappa-B activation, cytokine secretion and the inflammatory response.
組織特異性	Highly expressed in ovary and in peripheral blood leukocytes, especially in monocytes, less in CD11c+ immature dendritic cells. Also detected in prostate and testis.
関連疾患	Systemic lupus erythematosus 1
配列類似性	Belongs to the Toll-like receptor family. Contains 22 LRR (leucine-rich) repeats. Contains 1 LRRCT domain. Contains 1 TIR domain.
翻訳後修飾	Phosphorylated at Ser-805 by PKD/PRKD1; phosphorylation induces the production of inflammatory cytokines. Phosphorylated at Tyr-798 upon flagellin binding; required for signaling.
細胞内局在	Membrane.

画像



Lane 1 : Anti-TLR5 antibody (ab37071) at 0.5 µg/ml

Lane 2 : Anti-TLR5 antibody (ab37071) at 1 µg/ml

Lane 3 : Anti-TLR5 antibody (ab37071) at 2 µg/ml

All lanes : THP 1 cell lysate

Lysates/proteins at 15 µg per lane.

Predicted band size: 97 kDa

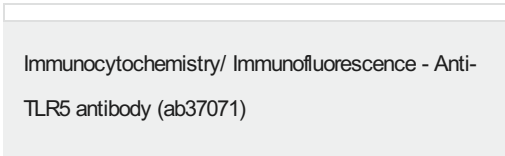
Observed band size: 97 kDa

Additional bands at: 65 kDa. We are unsure as to the identity of these extra bands.



Immunocytochemistry/ Immunofluorescence - Anti-TLR5 antibody (ab37071)

ab37071 at 10µg/ml staining TLR5 in THP-1 cells by ICC/IF



Immunocytochemistry/ Immunofluorescence - Anti-TLR5 antibody (ab37071)

Immunofluorescence of TLR5 in THP1 cells using ab37071 at 10 ug/ml.

Please note: All products are "FOR RESEARCH USE ONLY. NOT FOR USE IN DIAGNOSTIC PROCEDURES"

Our Abpromise to you: Quality guaranteed and expert technical support

- Replacement or refund for products not performing as stated on the datasheet
- Valid for 12 months from date of delivery
- Response to your inquiry within 24 hours
- We provide support in Chinese, English, French, German, Japanese and Spanish
- Extensive multi-media technical resources to help you
- We investigate all quality concerns to ensure our products perform to the highest standards

If the product does not perform as described on this datasheet, we will offer a refund or replacement. For full details of the Abpromise, please visit <https://www.abcam.co.jp/abpromise> or contact our technical team.

Terms and conditions

- Guarantee only valid for products bought direct from Abcam or one of our authorized distributors