

### Anti-TLR3 antibody ab62566

★★★★★ [11 Abreviews](#) [41 References](#) [画像数 5](#)

#### 製品の概要

製品名	Anti-TLR3 antibody
製品の詳細	Rabbit polyclonal to TLR3
由来種	Rabbit
アプリケーション	<b>適用あり:</b> IHC-P, ICC, WB
種交差性	<b>交差種:</b> Mouse, Human
免疫原	Synthetic peptide within Human TLR3 aa 780-830 (C terminal). The exact sequence is proprietary. 15 aa long. Database link: <a href="#">O15455</a> (Peptide available as <a href="#">ab125950</a> )
ポジティブ・コントロール	IHC-P: Human and mouse spleen tissue. WB: Daudi cell lysate and mouse spleen tissue. ICC: Human spleen tissue.
特記事項	<p>The Life Science industry has been in the grips of a reproducibility crisis for a number of years. Abcam is leading the way in addressing this with our range of recombinant monoclonal antibodies and knockout edited cell lines for gold-standard validation. Please check that this product meets your needs before purchasing.</p> <p>If you have any questions, special requirements or concerns, please send us an inquiry and/or contact our Support team ahead of purchase. Recommended alternatives for this product can be found below, along with publications, customer reviews and Q&amp;As</p>

#### 製品の特性

製品の状態	Liquid
保存方法	Shipped at 4°C. Store at +4°C short term (1-2 weeks). Store at +4°C.
バッファー	pH: 7.2 Preservative: 0.02% Sodium azide Constituent: PBS
精製度	Affinity purified
ポリ/モノ	ポリクローナル
アイソタイプ	IgG

## アプリケーション

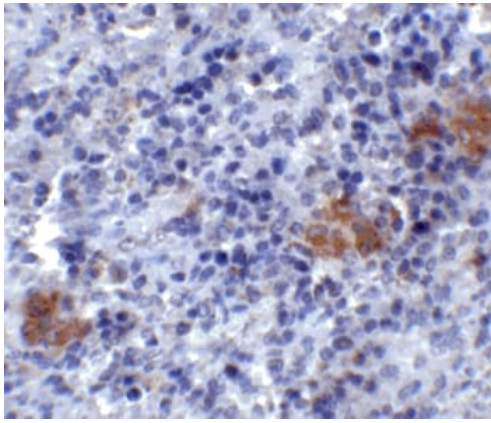
**The Abpromise guarantee**      Abpromise保証は、次のテスト済みアプリケーションにおけるab62566の使用に適用されます  
アプリケーションノートには、推奨の開始希釈率がありますが、適切な希釈率につきましてはご検討ください。

アプリケーション	Abreviews	特記事項
IHC-P	★★★★★ (2)	Use a concentration of 2 µg/ml. Perform heat mediated antigen retrieval before commencing with IHC staining protocol. Also see abreview 35252.
ICC		Use a concentration of 1 µg/ml.
WB	★★★★★ (6)	Use a concentration of 0.5 - 2 µg/ml. Detects a band of approximately 104 kDa (predicted molecular weight: 104 kDa).

## ターゲット情報

機能	Key component of innate and adaptive immunity. TLRs (Toll-like receptors) control host immune response against pathogens through recognition of molecular patterns specific of microorganisms. TLR3 is a nucleotide-sensing TLR which is activated by double-stranded RNA, a sign of viral infection. Acts via MYD88 and TRAF6, leading to NF-kappa-B activation, cytokine secretion and the inflammatory response.
組織特異性	Expressed at high level in placenta and pancreas. Also detected in CD11c+ immature dendritic cells. Only expressed in dendritic cells and not in other leukocytes, including monocyte precursors. TLR3 is the TLR that is expressed most strongly in the brain, especially in astrocytes, glia, and neurons.
関連疾患	Defects in TLR3 are associated with herpes simplex encephalitis type 2 (HSE2) [MIM:613002]. HSE is a rare complication of human herpesvirus 1 (HHV-1) infection, occurring in only a small minority of HHV-1 infected individuals. HSE is characterized by hemorrhagic necrosis of parts of the temporal and frontal lobes. Onset is over several days and involves fever, headache, seizures, stupor, and often coma, frequently with a fatal outcome. Note=TLR3 mutations predispose otherwise healthy individuals to isolated herpes simplex encephalitis through a mechanism that involves impaired IFNs production and reduced immune defense against viral infection in the central nervous system.
配列類似性	Belongs to the Toll-like receptor family. Contains 22 LRR (leucine-rich) repeats. Contains 1 LRRCT domain. Contains 1 LRRNT domain. Contains 1 TIR domain.
ドメイン	ds-RNA binding is mediated by LRR 1 to 3, and LRR 17 to 18.
翻訳後修飾	Heavily N-glycosylated, except on that part of the surface of the ectodomain that is involved in ligand binding.
細胞内局在	Endoplasmic reticulum membrane. Endosome membrane.

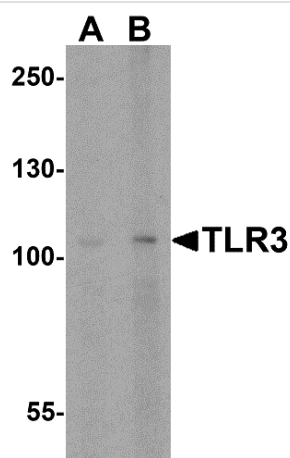
## 画像



Immunohistochemistry (Formalin/PFA-fixed paraffin-embedded sections) - Anti-TLR3 antibody (ab62566)

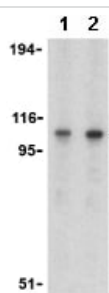
Paraffin-embedded mouse spleen tissue stained for TLR3 using ab62566 at 2 µg/ml in immunohistochemical analysis. DAB detection. Counterstained with hematoxylin.

Antigen Retrieval (Microwave Method).



Western blot - Anti-TLR3 antibody (ab62566)

Western blot analysis of TLR3 expression in mouse spleen tissue lysate with ab62566 at (A) 0.5 and (B) 1 µg/ml.



Western blot - Anti-TLR3 antibody (ab62566)

**Lane 1 :** Anti-TLR3 antibody (ab62566) at 1 µg/ml

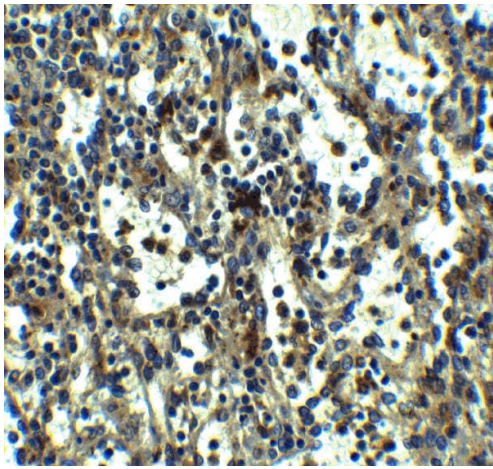
**Lane 2 :** Anti-TLR3 antibody (ab62566) at 2 µg/ml

**All lanes :** Daudi (Human Burkitt's lymphoma cell line) cell lysate

Lysates/proteins at 15 µg per lane.

**Predicted band size:** 104 kDa

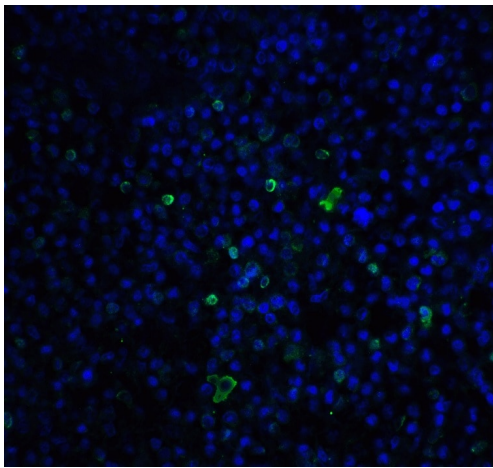
**Observed band size:** 104 kDa



Immunohistochemistry (Formalin/PFA-fixed paraffin-embedded sections) - Anti-TLR3 antibody (ab62566)

Paraffin-embedded human spleen tissue stained for TLR3 using ab62566 at 5 µg/ml in immunohistochemical analysis. DAB detection. Counterstained with hematoxylin.

Antigen Retrieval (Microwave Method).



Immunocytochemistry - Anti-TLR3 antibody (ab62566)

Immunocytochemical analysis of human spleen tissue labeling TLR3 using ab62566 at 20 µg/ml (green).

Antigen Retrieval (Microwave Method).

**Please note:** All products are "FOR RESEARCH USE ONLY. NOT FOR USE IN DIAGNOSTIC PROCEDURES"

### Our Abpromise to you: Quality guaranteed and expert technical support

- Replacement or refund for products not performing as stated on the datasheet
- Valid for 12 months from date of delivery
- Response to your inquiry within 24 hours
- We provide support in Chinese, English, French, German, Japanese and Spanish

- Extensive multi-media technical resources to help you
- We investigate all quality concerns to ensure our products perform to the highest standards

If the product does not perform as described on this datasheet, we will offer a refund or replacement. For full details of the Abpromise, please visit <https://www.abcam.co.jp/abpromise> or contact our technical team.

#### **Terms and conditions**

---

- Guarantee only valid for products bought direct from Abcam or one of our authorized distributors