

### Anti-TLR2 antibody [T2.5] ab16894

★★★★★ [1 Abreviews](#) [29 References](#) [画像数 3](#)

#### 製品の概要

---

|              |   |
|--------------|---|
| 製品名          | Anti-TLR2 antibody [T2.5]   |
| 製品の詳細        | Mouse monoclonal [T2.5] to TLR2   |
| 由来種          | Mouse   |
| 特異性          | The endotoxin concentration is < 24 EU/mg, determined with HIT302 LAL Assay. Negative control: CHO cells.   |
| アプリケーション     | <b>適用あり:</b> WB, Functional Studies, Flow Cyt   |
| 種交差性         | <b>交差種:</b> Mouse, Human  |
| 免疫原          | Synthetic peptide corresponding to Mouse TLR2.<br>Database link: <a href="#">Q9QUN7</a>   |
| ポジティブ・コントロール | Flow Cyt: RAW 264.7 cells. WB: Human lymph node tissue lysate.  |
| 特記事項         | <p>The Life Science industry has been in the grips of a reproducibility crisis for a number of years. Abcam is leading the way in addressing this with our range of recombinant monoclonal antibodies and knockout edited cell lines for gold-standard validation. Please check that this product meets your needs before purchasing.</p> <p>If you have any questions, special requirements or concerns, please send us an inquiry and/or contact our Support team ahead of purchase. Recommended alternatives for this product can be found below, along with publications, customer reviews and Q&amp;As</p> |

#### 製品の特性

---

|          |   |
|----------|---|
| 製品の状態    | Liquid  |
| 保存方法     | Shipped at 4°C. Upon delivery aliquot and store at -20°C. Avoid freeze / thaw cycles. |
| バッファー    | Constituents: PBS, 0.1% BSA   |
| 精製度      | Protein G purified  |
| 特記事項(精製) | 0.2 µm filtered   |
| ポリ/モノ    | モノクローナル   |
| クローン名    | T2.5  |
| アイソタイプ   | IgG1  |

## アプリケーション

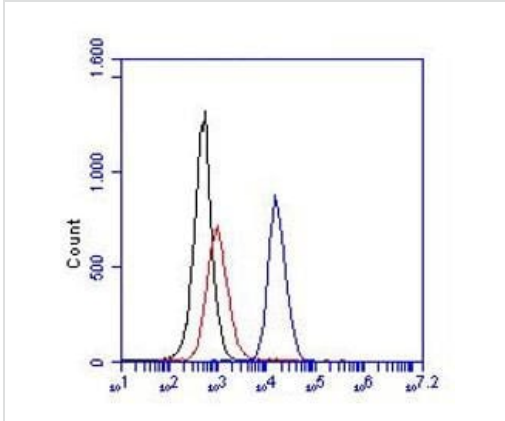
The Abpromise guarantee **Abpromise保証は、次のテスト済みアプリケーションにおけるab16894の使用に適用されず**  
アプリケーションノートには、推奨の開始希釈率がありますが、適切な希釈率につきましてはご検討ください。

| アプリケーション           | Abreviews | 特記事項   |
|--------------------|-----------|--|
| WB                 | ★★★★☆ (1) | Use at an assay dependent concentration. Predicted molecular weight: 89 kDa.   |
| Functional Studies |           | Use at an assay dependent concentration.<br>Mice were injected i.p. with 1 mg ab16894, after 1 hour incubation mice were challenged; 5 µg/ml was added to cell culture.  |
| Flow Cyt           |           | Use at an assay dependent concentration.<br><b>ab170190</b> - Mouse monoclonal IgG1, is suitable for use as an isotype control with this antibody.<br>4 x 10 <sup>4</sup> leukocytes/ml were stained for 30 minutes at 4 °C. |

## ターゲット情報

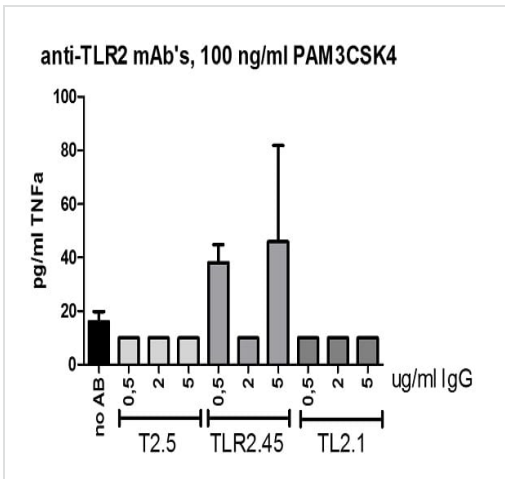
|       |  |
|-------|--|
| 機能    | Cooperates with LY96 to mediate the innate immune response to bacterial lipoproteins and other microbial cell wall components. Cooperates with TLR1 to mediate the innate immune response to bacterial lipoproteins or lipopeptides. Acts via MYD88 and TRAF6, leading to NF-kappa-B activation, cytokine secretion and the inflammatory response. May also promote apoptosis in response to lipoproteins. Recognizes mycoplasmal macrophage-activating lipopeptide-2kD (MALP-2), soluble tuberculosis factor (STF), phenol-soluble modulins (PSM) and B.burgdorferi outer surface protein A lipoprotein (OspA-L) cooperatively with TLR6. |
| 組織特異性 | Highly expressed in peripheral blood leukocytes, in particular in monocytes, in bone marrow, lymph node and in spleen. Also detected in lung and in fetal liver. Levels are low in other tissues.  |
| 配列類似性 | Belongs to the Toll-like receptor family.<br>Contains 14 LRR (leucine-rich) repeats.<br>Contains 1 TIR domain.   |
| 翻訳後修飾 | Glycosylation of Asn-442 is critical for secretion of the N-terminal ectodomain of TLR2.   |
| 細胞内局在 | Membrane.  |

## 画像



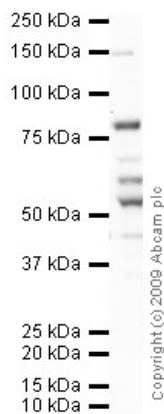
Detection of TLR2 in RAW cells. Red, black and blue line represent the isotype control, cells only and ab16894 at 10 µg/ml, respectively.

Flow Cytometry - Anti-TLR2 antibody [T2.5]  
(ab16894)



Effect of anti-TLR antibodies on TNF production in a whole blood model.

Functional Studies - Anti-TLR2 antibody [T2.5]  
(ab16894)



Western blot - Anti-TLR2 antibody [T2.5] (ab16894)

Anti-TLR2 antibody [T2.5] (ab16894) at 1/100 dilution + Human lymph node tissue lysate - total protein (**ab29871**) at 10  $\mu$ g

#### Secondary

Goat polyclonal to Mouse IgG - H&L - Pre-Adsorbed (HRP) at 1/3000 dilution

**Predicted band size:** 89 kDa

**Observed band size:** 89 kDa

**Additional bands at:** 60 kDa, 65 kDa. We are unsure as to the identity of these extra bands.

**Please note:** All products are "FOR RESEARCH USE ONLY. NOT FOR USE IN DIAGNOSTIC PROCEDURES"

#### Our Abpromise to you: Quality guaranteed and expert technical support

- Replacement or refund for products not performing as stated on the datasheet
- Valid for 12 months from date of delivery
- Response to your inquiry within 24 hours
- We provide support in Chinese, English, French, German, Japanese and Spanish
- Extensive multi-media technical resources to help you
- We investigate all quality concerns to ensure our products perform to the highest standards

If the product does not perform as described on this datasheet, we will offer a refund or replacement. For full details of the Abpromise, please visit <https://www.abcam.co.jp/abpromise> or contact our technical team.

#### Terms and conditions

- Guarantee only valid for products bought direct from Abcam or one of our authorized distributors