

# Anti-TLR2 antibody [EPR20302-119] ab209216

リコンビナント **RabMAb**

**1 Abreviews** **5 References** **画像数 5**

### 製品の概要

製品名	Anti-TLR2 antibody [EPR20302-119]
製品の詳細	Rabbit monoclonal [EPR20302-119] to TLR2
由来種	Rabbit
アプリケーション	<b>適用あり:</b> WB, IHC-P, ICC/IF <b>適用なし:</b> Flow Cyt
種交差性	<b>交差種:</b> Mouse
免疫原	Recombinant fragment. This information is proprietary to Abcam and/or its suppliers.
ポジティブ・コントロール	WB: RAW 264.7 whole cell lysate. IHC-P: Mouse liver and lung tissues. ICC/IF: RAW 264.7 cells.
特記事項	This product is a recombinant monoclonal antibody, which offers several advantages including: <ul style="list-style-type: none"> <li>- High batch-to-batch consistency and reproducibility</li> <li>- Improved sensitivity and specificity</li> <li>- Long-term security of supply</li> <li>- Animal-free production</li> </ul> For more information <a href="#">see here</a> . Our RabMAb <sup>®</sup> technology is a patented hybridoma-based technology for making rabbit monoclonal antibodies. For details on our patents, please refer to <a href="#">RabMAb<sup>®</sup> patents</a> .

### 製品の特性

製品の状態	Liquid
保存方法	Shipped at 4°C. Store at +4°C short term (1-2 weeks). Upon delivery aliquot. Store at -20°C long term. Avoid freeze / thaw cycle.
バッファー	pH: 7.2 Preservative: 0.01% Sodium azide Constituents: PBS, 40% Glycerol (glycerin, glycerine), 0.05% BSA
精製度	Protein A purified
ポリ/モノ	モノクローナル
クローン名	EPR20302-119
アイソタイプ	IgG

## アプリケーション

**The Abpromise guarantee**      **Abpromise保証は、** 次のテスト済みアプリケーションにおけるab209216の使用に適用されます  
アプリケーションノートには、推奨の開始希釈率がありますが、適切な希釈率につきましてはご検討ください。

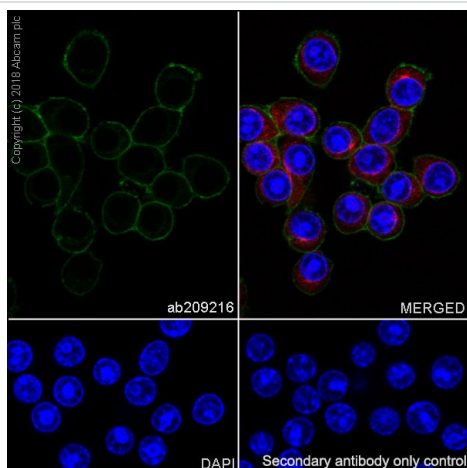
アプリケーション	Abreviews	特記事項
WB		1/1000. Detects a band of approximately 89 kDa (predicted molecular weight: 89 kDa).
IHC-P		1/250. Perform heat mediated antigen retrieval with Tris/EDTA buffer pH 9.0 before commencing with IHC staining protocol.
ICC/IF		1/100. Fixation with 4% PFA is not recommended as no staining was obtained.

**追加情報**      Is unsuitable for Flow Cyt.

## ターゲット情報

<b>機能</b>	Cooperates with LY96 to mediate the innate immune response to bacterial lipoproteins and other microbial cell wall components. Cooperates with TLR1 to mediate the innate immune response to bacterial lipoproteins or lipopeptides. Acts via MYD88 and TRAF6, leading to NF-kappa-B activation, cytokine secretion and the inflammatory response. May also promote apoptosis in response to lipoproteins. Recognizes mycoplasmal macrophage-activating lipopeptide-2kD (MALP-2), soluble tuberculosis factor (STF), phenol-soluble modulin (PSM) and B.burgdorferi outer surface protein A lipoprotein (OspA-L) cooperatively with TLR6.
<b>組織特異性</b>	Highly expressed in peripheral blood leukocytes, in particular in monocytes, in bone marrow, lymph node and in spleen. Also detected in lung and in fetal liver. Levels are low in other tissues.
<b>配列類似性</b>	Belongs to the Toll-like receptor family. Contains 14 LRR (leucine-rich) repeats. Contains 1 TIR domain.
<b>翻訳後修飾</b>	Glycosylation of Asn-442 is critical for secretion of the N-terminal ectodomain of TLR2.
<b>細胞内局在</b>	Membrane.

## 画像



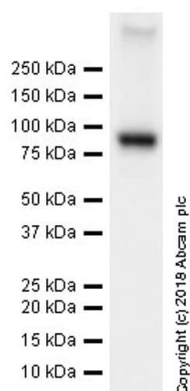
Immunocytochemistry/ Immunofluorescence - Anti-TLR2 antibody [EPR20302-119] (ab209216)

Immunofluorescent analysis of 100% methanol-fixed RAW 264.7 (mouse macrophage cell line transformed with Abelson murine leukemia virus) cells labeling TLR2 with ab209216 at 1/100 dilution, followed by Goat Anti-Rabbit IgG H&L (Alexa Fluor® 488) ([ab150077](#)) secondary antibody at 1/1000 dilution (green). Confocal image showing membranous staining in RAW 264.7 cells.

The nuclear counter stain is DAPI (blue). Tubulin is detected with Anti-alpha Tubulin antibody [DM1A] - Microtubule Marker (Alexa Fluor® 594) ([ab195889](#)) at 1/200 dilution (red).

Secondary antibody only control: Used PBS instead of primary antibody followed by anti-Rabbit IgG H&L (Alexa Fluor® 488) ([ab150077](#)) secondary antibody at 1/1000 dilution.

**Fixation with 4% PFA is not recommended as no staining was obtained.**



Western blot - Anti-TLR2 antibody [EPR20302-119] (ab209216)

Anti-TLR2 antibody [EPR20302-119] (ab209216) at 1/1000 dilution + RAW 264.7 (mouse macrophage cell line transformed with Abelson murine leukemia virus) whole cell lysate at 20 µg

#### Secondary

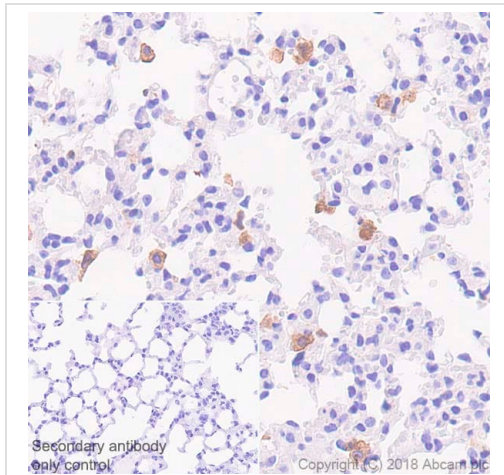
Goat Anti-Rabbit IgG H&L (HRP) ([ab97051](#)) at 1/100000 dilution

**Predicted band size:** 89 kDa

**Observed band size:** 89 kDa

**Exposure time:** 26 seconds

Blocking and dilution buffer: 5% NFDm/TBST.



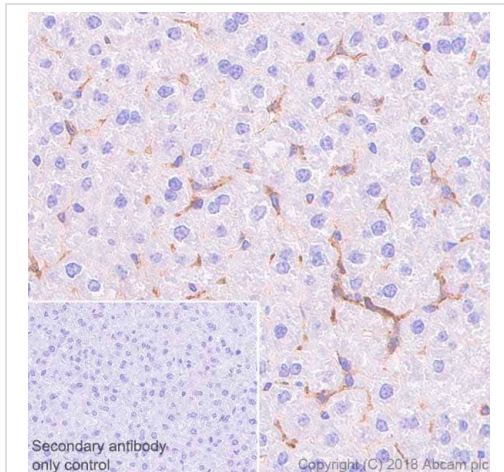
Immunohistochemistry (Formalin/PFA-fixed paraffin-embedded sections) - Anti-TLR2 antibody [EPR20302-119] (ab209216)

Immunohistochemical analysis of paraffin-embedded mouse lung tissue labeling TLR2 with ab209216 at 1/250 dilution, followed by Goat Anti-Rabbit IgG H&L (HRP) Ready to use. Cytoplasmic staining on macrophages of mouse lung (PMID: 24371556). Counter stained with hematoxylin.

Secondary antibody only control: Used PBS instead of primary antibody, secondary antibody is Goat Anti-Rabbit IgG H&L (HRP) Ready to use.

The immunostaining staining was performed on a Leica Biosystems BOND® RX instrument. The section was incubated with ab209216 for 10 minutes at 37°C.

Perform heat mediated antigen retrieval with Tris/EDTA buffer pH 9.0 before commencing with IHC staining protocol.



Immunohistochemistry (Formalin/PFA-fixed paraffin-embedded sections) - Anti-TLR2 antibody [EPR20302-119] (ab209216)

Immunohistochemical analysis of paraffin-embedded mouse liver tissue labeling TLR2 with ab209216 at 1/250 dilution, followed by Goat Anti-Rabbit IgG H&L (HRP) Ready to use. Cytoplasmic staining on Kuffer cells of mouse liver (PMID: 21966468). Counter stained with hematoxylin.

Secondary antibody only control: Used PBS instead of primary antibody, secondary antibody is Goat Anti-Rabbit IgG H&L (HRP) Ready to use.

The immunostaining staining was performed on a Leica Biosystems BOND® RX instrument. The section was incubated with ab209216 for 10 minutes at 37°C.

Perform heat mediated antigen retrieval with Tris/EDTA buffer pH 9.0 before commencing with IHC staining protocol.

### Why choose a recombinant antibody?



**Research with confidence**  
Consistent and reproducible results



**Long-term and scalable supply**  
Recombinant technology



**Success from the first experiment**  
Confirmed specificity



**Ethical standards compliant**  
Animal-free production

Anti-TLR2 antibody [EPR20302-119] (ab209216)

**Please note:** All products are "FOR RESEARCH USE ONLY. NOT FOR USE IN DIAGNOSTIC PROCEDURES"

### Our Abpromise to you: Quality guaranteed and expert technical support

---

- Replacement or refund for products not performing as stated on the datasheet
- Valid for 12 months from date of delivery
- Response to your inquiry within 24 hours
- We provide support in Chinese, English, French, German, Japanese and Spanish
- Extensive multi-media technical resources to help you
- We investigate all quality concerns to ensure our products perform to the highest standards

If the product does not perform as described on this datasheet, we will offer a refund or replacement. For full details of the Abpromise, please visit <https://www.abcam.co.jp/abpromise> or contact our technical team.

### Terms and conditions

---

- Guarantee only valid for products bought direct from Abcam or one of our authorized distributors