


### Anti-TLR2 antibody ab213676

★★★★★ [1 Abreviews](#) [24 References](#) [画像数 6](#)

#### 製品の概要

|          |  |
|----------|--|
| 製品名      | Anti-TLR2 antibody   |
| 製品の詳細    | Rabbit polyclonal to TLR2  |
| 由来種      | Rabbit   |
| アプリケーション | <b>適用あり:</b> IHC-P, WB   |
| 種交差性     | <b>交差種:</b> Mouse, Rat, Human<br><b>交差が予測される動物種:</b> Cow    |
| 免疫原      | Synthetic peptide within Human TLR2 aa 700 to the C-terminus conjugated to keyhole limpet haemocyanin. The exact immunogen sequence used to generate this antibody is proprietary information. If additional detail on the immunogen is needed to determine the suitability of the antibody for your needs, please <b>contact</b> our Scientific Support team to discuss your requirements.<br>Database link: <a href="#">O60603</a> |

 [Run BLAST with](#)

 [Run BLAST with](#)

ポジティブ・コントロール IHC-P: Rat ovary tissue. WB: Rat brain and lung lysate.

#### 特記事項

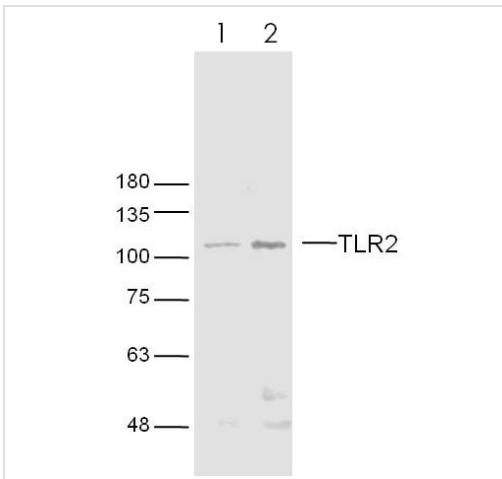
The Life Science industry has been in the grips of a reproducibility crisis for a number of years. Abcam is leading the way in addressing this with our range of recombinant monoclonal antibodies and knockout edited cell lines for gold-standard validation. Please check that this product meets your needs before purchasing.

If you have any questions, special requirements or concerns, please send us an inquiry and/or contact our Support team ahead of purchase. Recommended alternatives for this product can be found below, along with publications, customer reviews and Q&As

#### 製品の特性

|       |   |
|-------|---|
| 製品の状態 | Liquid  |
| 保存方法  | Shipped at 4°C. Store at +4°C short term (1-2 weeks). Upon delivery aliquot. Store at -20°C long term. Avoid freeze / thaw cycle. |
| バッファー | pH: 7.40<br>Preservative: 0.02% Proclin 300<br>Constituents: 50% Glycerol (glycerin, glycerine), 1% BSA, 48.98% TBS, 1X           |
| 精製度   | Protein A purified  |





Western blot - Anti-TLR2 antibody (ab213676)

**All lanes :** Anti-TLR2 antibody (ab213676) at 1/300 dilution

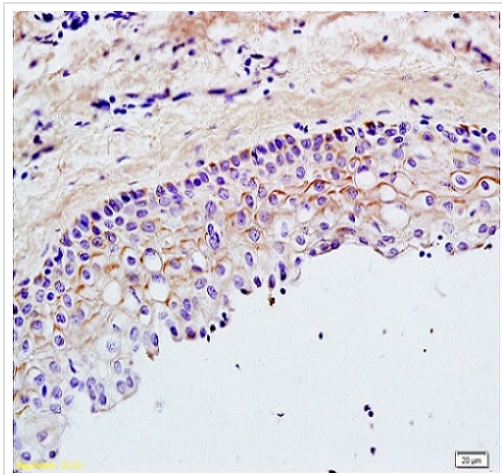
**Lane 1 :** Mouse spleen tissue lysate

**Lane 2 :** Mouse thymus tissue lysate

**Predicted band size:** 89 kDa

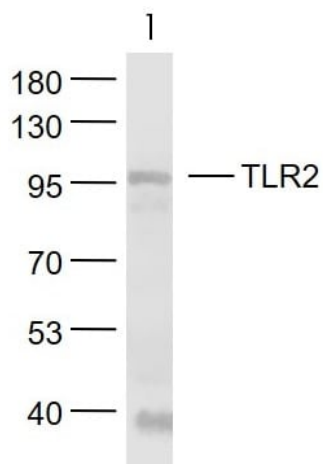
Incubated with the primary antibody overnight at 4°C.

Incubated with the secondary antibody for 60 minutes at 37°C.



Immunohistochemistry (Formalin/PFA-fixed paraffin-embedded sections) - Anti-TLR2 antibody (ab213676)

Immunohistochemical analysis of formalin-fixed, paraffin-embedded rat ovary tissue labeling TLR2 with ab213676 at 1/200 dilution, followed by conjugation to the secondary antibody and DAB staining.



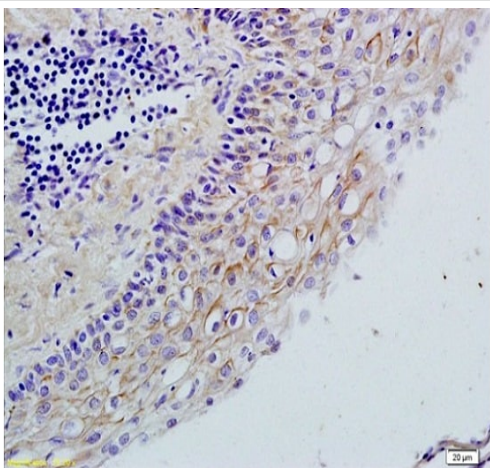
Western blot - Anti-TLR2 antibody (ab213676)

Anti-TLR2 antibody (ab213676) at 1/1000 dilution + Cerebrum tissue lysate

**Predicted band size:** 89 kDa

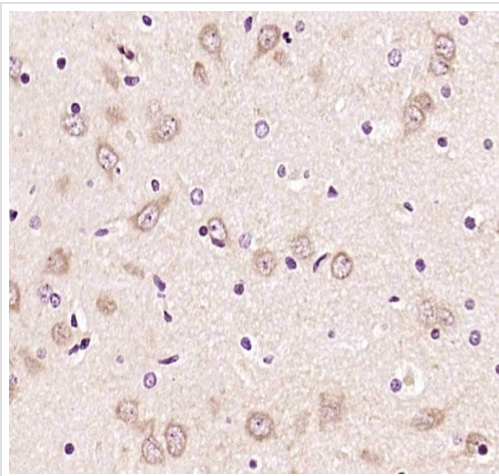
Incubated with the primary antibody overnight at 4°C.

Incubated with the secondary antibody for 60 minutes at 37°C.



Immunohistochemistry (Formalin/PFA-fixed paraffin-embedded sections) - Anti-TLR2 antibody (ab213676)

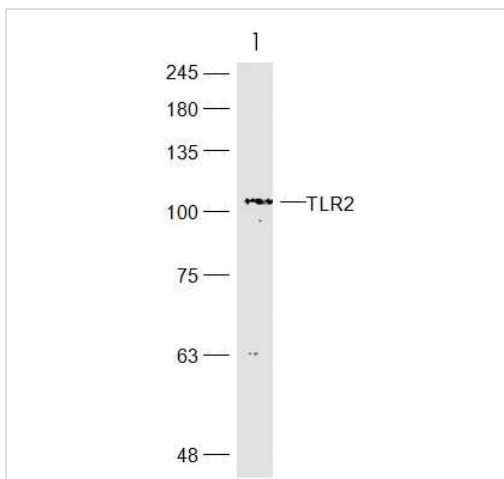
Immunohistochemical analysis of formalin-fixed, paraffin-embedded rat ovary tissue labeling TLR2 with ab213676 at 1/200 dilution, followed by conjugation to the secondary antibody and DAB staining.



Immunohistochemistry (Formalin/PFA-fixed paraffin-embedded sections) - Anti-TLR2 antibody (ab213676)

Immunohistochemical analysis of formalin-fixed, paraffin-embedded rat brain tissue labeling TLR2 with ab213676 at 1/400 dilution, followed by conjugation to the secondary antibody and DAB and counterstaining.

Antigen retrieval was performed by boiling in sodium citrate buffer (0.01M, pH6) for 15 minutes, blocked by endogenous peroxidase by 3% hydrogen peroxide for 30 minutes, blocking buffer (normal goat serum) at 37°C for 20 minutes.



Western blot - Anti-TLR2 antibody (ab213676)

Anti-TLR2 antibody (ab213676) at 1/300 dilution + Raw264.7 cell lysate

**Predicted band size: 89 kDa**

Incubated with the primary antibody overnight at 4°C.

Incubated with the secondary antibody for 60 minutes at 37°C.

**Please note:** All products are "FOR RESEARCH USE ONLY. NOT FOR USE IN DIAGNOSTIC PROCEDURES"

**Our Abpromise to you: Quality guaranteed and expert technical support**

- Replacement or refund for products not performing as stated on the datasheet
- Valid for 12 months from date of delivery
- Response to your inquiry within 24 hours
  
- We provide support in Chinese, English, French, German, Japanese and Spanish
- Extensive multi-media technical resources to help you
- We investigate all quality concerns to ensure our products perform to the highest standards

If the product does not perform as described on this datasheet, we will offer a refund or replacement. For full details of the Abpromise, please visit <https://www.abcam.co.jp/abpromise> or contact our technical team.

### **Terms and conditions**

---

- Guarantee only valid for products bought direct from Abcam or one of our authorized distributors