

Anti-TLR10 antibody ab21273

画像数 1

製品の概要

製品名	Anti-TLR10 antibody
製品の詳細	Rabbit polyclonal to TLR10
由来種	Rabbit
アプリケーション	適用あり: WB
種交差性	交差種: Human
免疫原	Synthetic peptide corresponding to 14 amino acids near the middle of TLR10 (Human).
ポジティブ・コントロール	Human lymph node cell lysate.
特記事項	<p>The Life Science industry has been in the grips of a reproducibility crisis for a number of years. Abcam is leading the way in addressing this with our range of recombinant monoclonal antibodies and knockout edited cell lines for gold-standard validation. Please check that this product meets your needs before purchasing.</p> <p>If you have any questions, special requirements or concerns, please send us an inquiry and/or contact our Support team ahead of purchase. Recommended alternatives for this product can be found below, along with publications, customer reviews and Q&As</p>

製品の特性

製品の状態	Liquid
保存方法	Shipped at 4°C. Store at +4°C.
バッファー	pH: 7.2 Preservative: 0.02% Sodium azide Constituent: PBS
精製度	Affinity purified
ポリ/モノ	ポリクローナル
アイソタイプ	IgG

アプリケーション

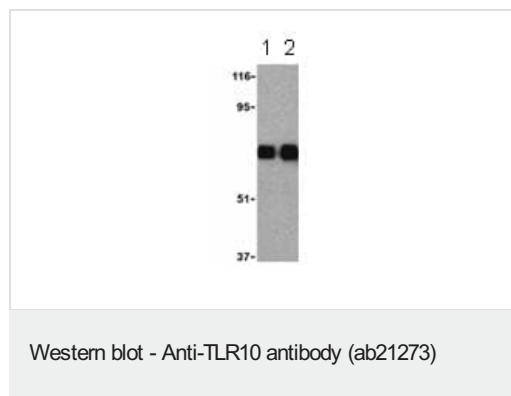
The Abpromise guarantee **Abpromise保証は、**次のテスト済みアプリケーションにおけるab21273の使用に適用されます
アプリケーションノートには、推奨の開始希釈率がありますが、適切な希釈率につきましてはご検討ください。

アプリケーション	Abreviews	特記事項
WB		Use a concentration of 0.5 - 1 µg/ml. Predicted molecular weight: 94 kDa. Can be blocked with <u>Active human TLR10 peptide (ab39866)</u> .

ターゲット情報

機能	Participates in the innate immune response to microbial agents. Acts via MYD88 and TRAF6, leading to NF-kappa-B activation, cytokine secretion and the inflammatory response.
組織特異性	Highly expressed in spleen, lymph node, thymus, tonsil and at lower levels in lung. Highly expressed in promyelocytic HL-60 cells and in B-cell lines.
配列類似性	Belongs to the Toll-like receptor family. Contains 15 LRR (leucine-rich) repeats. Contains 1 LRRCT domain. Contains 1 TIR domain.
細胞内局在	Membrane.

画像



Lane 1 : Anti-TLR10 antibody (ab21273) at 0.5 µg/ml

Lane 2 : Anti-TLR10 antibody (ab21273) at 1 µg/ml

All lanes : Human lymph node cell lysates

Predicted band size: 94 kDa

Observed band size: 75 kDa

Please note: All products are "FOR RESEARCH USE ONLY. NOT FOR USE IN DIAGNOSTIC PROCEDURES"

Our Abpromise to you: Quality guaranteed and expert technical support

- Replacement or refund for products not performing as stated on the datasheet
- Valid for 12 months from date of delivery
- Response to your inquiry within 24 hours
- We provide support in Chinese, English, French, German, Japanese and Spanish
- Extensive multi-media technical resources to help you
- We investigate all quality concerns to ensure our products perform to the highest standards

If the product does not perform as described on this datasheet, we will offer a refund or replacement. For full details of the Abpromise, please visit <https://www.abcam.co.jp/abpromise> or contact our technical team.

Terms and conditions

- Guarantee only valid for products bought direct from Abcam or one of our authorized distributors