

Anti-TL1A antibody [EPR23330-2] ab270456

リコンビナント RabMAb

画像数 4

製品の概要

製品名	Anti-TL1A antibody [EPR23330-2]
製品の詳細	Rabbit monoclonal [EPR23330-2] to TL1A
由来種	Rabbit
アプリケーション	適用あり: WB, IP 適用なし: Flow Cyt, ICC/IF or IHC-P
種交差性	交差種: Human
免疫原	Recombinant fragment. This information is proprietary to Abcam and/or its suppliers.
ポジティブ・コントロール	WB: HUVEC, HUVEC (treated with/ml TNF-alpha for 24 hours) and HT-29 whole cell lysates. IP: HT-29 whole cell lysate.
特記事項	This product is a recombinant monoclonal antibody, which offers several advantages including: <ul style="list-style-type: none">- High batch-to-batch consistency and reproducibility- Improved sensitivity and specificity- Long-term security of supply- Animal-free production For more information see here . Our RabMAb [®] technology is a patented hybridoma-based technology for making rabbit monoclonal antibodies. For details on our patents, please refer to RabMAb[®] patents .

製品の特性

製品の状態	Liquid
保存方法	Shipped at 4°C. Store at +4°C short term (1-2 weeks). Upon delivery aliquot. Store at -20°C long term. Avoid freeze / thaw cycle.
バッファー	pH: 7.2 Preservative: 0.01% Sodium azide Constituents: PBS, 40% Glycerol (glycerin, glycerine), 0.05% BSA
精製度	Protein A purified
ポリ/モノ	モノクローナル
クローン名	EPR23330-2

アイソタイプ

IgG

アプリケーション

The Abpromise guarantee **Abpromise保証は、次のテスト済みアプリケーションにおけるab270456の使用に適用されます**
アプリケーションノートには、推奨の開始希釈率がありますが、適切な希釈率につきましてはご確認ください。

アプリケーション	Abreviews	特記事項
WB		1/1000. Detects a band of approximately 25-36 kDa (predicted molecular weight: 28 kDa).
IP		1/30.

追加情報

Is unsuitable for Flow Cyt, ICC/IF or IHC-P.

ターゲット情報

機能

Receptor for TNFRSF25 and TNFRSF6B. Mediates activation of NF-kappa-B. Inhibits vascular endothelial growth and angiogenesis (in vitro). Promotes activation of caspases and apoptosis.

組織特異性

Specifically expressed in endothelial cells. Detected in monocytes, placenta, lung, liver, kidney, skeletal muscle, pancreas, spleen, prostate, small intestine and colon.

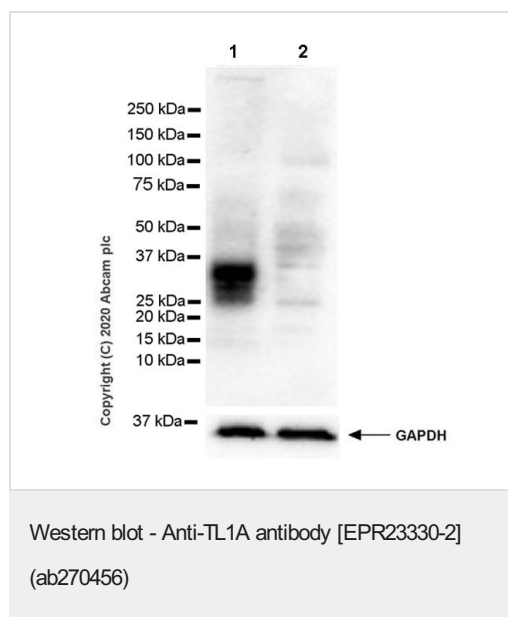
配列類似性

Belongs to the tumor necrosis factor family.

細胞内局在

Secreted and Membrane.

画像



All lanes : Anti-TL1A antibody [EPR23330-2] (ab270456) at 1/1000 dilution

Lane 1 : HT-29 (human colorectal adenocarcinoma epithelial cell), whole cell lysate

Lane 2 : MCF7 (human breast adenocarcinoma epithelial cell), whole cell lysate

Lysates/proteins at 40 µg per lane.

Secondary

All lanes : Goat Anti-Rabbit IgG, (H+L), Peroxidase conjugated ([ab97051](#)) at 1/100000 dilution

Predicted band size: 28 kDa

Observed band size: 25-36 kDa

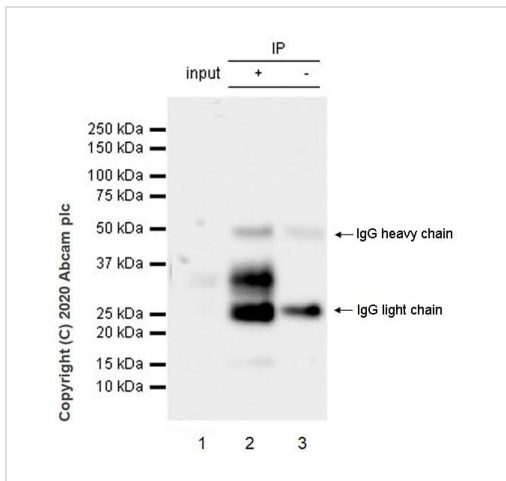
Blocking and dilution buffer: 5% NFDM/TBST.

Exposure time: 3 minutes.

TL1A is a glycoprotein, the molecular weight observed is consistent with what has been described in literature (PMID 20675618).

Negative control: MCF7 (PMID: 9434163).

This blot was developed using a higher sensitivity ECL substrate.



Immunoprecipitation - Anti-TL1A antibody
[EPR23330-2] (ab270456)

TL1A was immunoprecipitated from 0.35 mg HT-29 (human colorectal adenocarcinoma epithelial cell), whole cell lysate with ab270456 at 1/30 dilution (2ug in 0.35mg lysates). Western blot was performed on the immunoprecipitate using ab270456 at 270456 dilution. VeriBlot for IP Detection Reagent (HRP) ([ab131366](#)) was used at 1/1000 dilution.

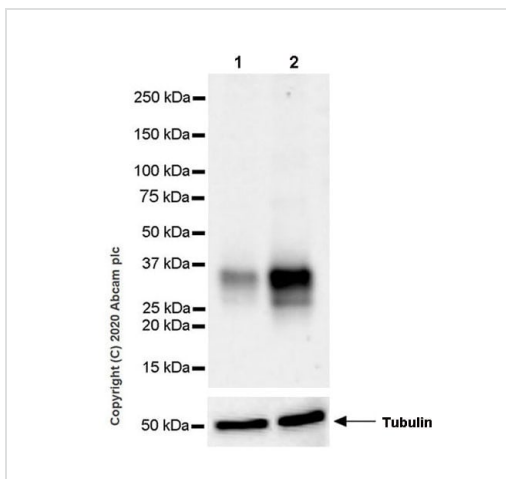
Lane 1: HT-29 (human colorectal adenocarcinoma epithelial cell), whole cell lysate 10 ug

Lane 2: ab270456 IP in HT-29 whole cell lysate

Lane 3: Rabbit monoclonal IgG ([ab172730](#)) instead of ab270456 in mouse ovary tissue lysate

Blocking and dilution buffer and concentration: 5% NFDM/TBST.

Exposure time: 32 seconds



Western blot - Anti-TL1A antibody [EPR23330-2]
(ab270456)

All lanes : Anti-TL1A antibody [EPR23330-2] (ab270456) at 1/1000 dilution

Lane 1 : HUVEC (human umbilical vein endothelial cell), whole cell lysate at 20 µg

Lane 2 : HUVEC treated with/ml TNF-alpha for 24 hours, whole cell lysate 20

Secondary

All lanes : Goat Anti-Rabbit IgG, (H+L), Peroxidase conjugated ([ab97051](#)) at 1/100000 dilution

Predicted band size: 28 kDa

Observed band size: 25-36 kDa

Blocking and dilution buffer: 5% NFDM/TBST.

Exposure time: 59 seconds.

TL1A is a glycoprotein, the molecular weight observed is consistent with what have been described in literature (PMID 20675618).

The expression of TL1A is induced by TNFa in HUVEC (PMID: 15847792).

Why choose a recombinant antibody?

Research with confidence
Consistent and reproducible results

Long-term and scalable supply
Recombinant technology

Success from the first experiment
Confirmed specificity

Ethical standards compliant
Animal-free production

Anti-TL1A antibody [EPR23330-2] (ab270456)

Please note: All products are "FOR RESEARCH USE ONLY. NOT FOR USE IN DIAGNOSTIC PROCEDURES"

Our Abpromise to you: Quality guaranteed and expert technical support

- Replacement or refund for products not performing as stated on the datasheet
- Valid for 12 months from date of delivery
- Response to your inquiry within 24 hours
- We provide support in Chinese, English, French, German, Japanese and Spanish
- Extensive multi-media technical resources to help you
- We investigate all quality concerns to ensure our products perform to the highest standards

If the product does not perform as described on this datasheet, we will offer a refund or replacement. For full details of the Abpromise, please visit <https://www.abcam.co.jp/abpromise> or contact our technical team.

Terms and conditions

- Guarantee only valid for products bought direct from Abcam or one of our authorized distributors