

Anti-TL1A antibody ab64986

1 [References](#) [画像数](#) **2**

製品の概要

| | |
|--------------|---|
| 製品名 | Anti-TL1A antibody |
| 製品の詳細 | Rabbit polyclonal to TL1A |
| 由来種 | Rabbit |
| アプリケーション | 適用あり: WB, ICC/IF |
| 種交差性 | 交差種: Human |
| 免疫原 | Synthetic peptide corresponding to Human TL1A (C terminal). Database link: O95150-1 |
| ポジティブ・コントロール | COLO205 cell extract HeLa cells |
| 特記事項 | <p>The Life Science industry has been in the grips of a reproducibility crisis for a number of years. Abcam is leading the way in addressing this with our range of recombinant monoclonal antibodies and knockout edited cell lines for gold-standard validation. Please check that this product meets your needs before purchasing.</p> <p>If you have any questions, special requirements or concerns, please send us an inquiry and/or contact our Support team ahead of purchase. Recommended alternatives for this product can be found below, along with publications, customer reviews and Q&As</p> |

製品の特性

| | |
|--------|--|
| 製品の状態 | Liquid |
| 保存方法 | Shipped at 4°C. Store at -20°C. Stable for 12 months at -20°C. |
| バッファー | pH: 7.40 Preservative: 0.02% Sodium azide Constituents: PBS, 50% Glycerol (glycerin, glycerine), 0.87% Sodium chloride |
| 精製度 | Without Mg ²⁺ and Ca ²⁺ Immunogen affinity purified |
| ポリ/モノ | ポリクローナル |
| アイソタイプ | IgG |

アプリケーション

The Abpromise guarantee

Abpromise保証は、次のテスト済みアプリケーションにおけるab64986の使用に適用されます

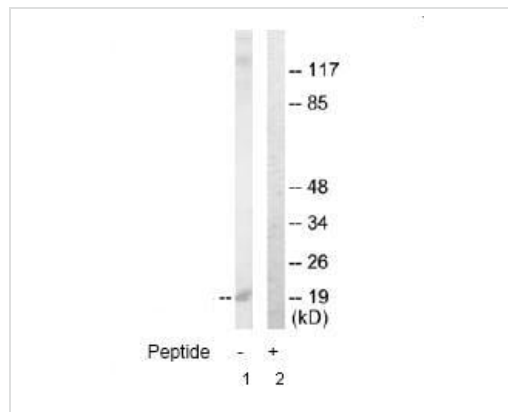
アプリケーションノートには、推奨の開始希釈率がありますが、適切な希釈率につきましてはご検討ください。

| アプリケーション | Abreviews | 特記事項 |
|----------|-----------|--|
| WB | | 1/500 - 1/1000. Detects a band of approximately 20 kDa (predicted molecular weight: 20 kDa). |
| ICC/IF | | 1/500 - 1/1000. |

ターゲット情報

| | |
|-------|---|
| 機能 | Receptor for TNFRSF25 and TNFRSF6B. Mediates activation of NF-kappa-B. Inhibits vascular endothelial growth and angiogenesis (in vitro). Promotes activation of caspases and apoptosis. |
| 組織特異性 | Specifically expressed in endothelial cells. Detected in monocytes, placenta, lung, liver, kidney, skeletal muscle, pancreas, spleen, prostate, small intestine and colon. |
| 配列類似性 | Belongs to the tumor necrosis factor family. |
| 細胞内局在 | Secreted and Membrane. |

画像



Western blot - Anti-TL1A antibody (ab64986)

All lanes : Anti-TL1A antibody (ab64986) at 1/500 dilution

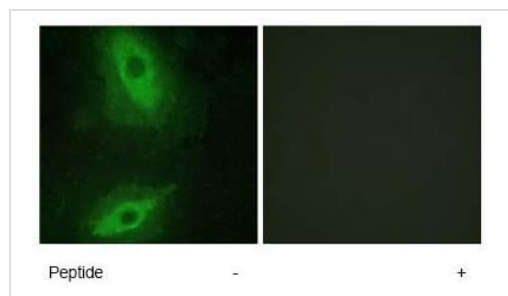
Lane 1 : COLO205 cell extract

Lane 2 : COLO205 cell extract with immunising peptide at 10 µg

Lysates/proteins at 30 µg per lane.

Predicted band size: 20 kDa

Observed band size: 20 kDa



Immunocytochemistry/ Immunofluorescence - Anti-TL1A antibody (ab64986)

Immunofluorescence analysis of HeLa cells, using ab64986 at 1/500-1/1000 dilution. Right hand panel was also treated with immunising peptide.

Please note: All products are "FOR RESEARCH USE ONLY. NOT FOR USE IN DIAGNOSTIC PROCEDURES"

Our Abpromise to you: Quality guaranteed and expert technical support

- Replacement or refund for products not performing as stated on the datasheet
- Valid for 12 months from date of delivery
- Response to your inquiry within 24 hours

- We provide support in Chinese, English, French, German, Japanese and Spanish
- Extensive multi-media technical resources to help you
- We investigate all quality concerns to ensure our products perform to the highest standards

If the product does not perform as described on this datasheet, we will offer a refund or replacement. For full details of the Abpromise, please visit <https://www.abcam.co.jp/abpromise> or contact our technical team.

Terms and conditions

- Guarantee only valid for products bought direct from Abcam or one of our authorized distributors