

Anti-TIP30 antibody [EPR13179] ab177961

リコンビナント RabMAb

4 References [画像数 7](#)

製品の概要

製品名	Anti-TIP30 antibody [EPR13179]
製品の詳細	Rabbit monoclonal [EPR13179] to TIP30
由来種	Rabbit
アプリケーション	適用あり: Flow Cyt (Intra), IP, IHC-P, WB, ICC/IF
種交差性	交差種: Mouse, Rat, Human
免疫原	Synthetic peptide within Human TIP30 aa 50-150 (Cysteine residue). The exact sequence is proprietary. Database link: Q9BUP3
ポジティブ・コントロール	HeLa, A431, and fetal liver lysates; Human pancreas and placenta tissues; A431 cells; HeLa cells.
特記事項	This product is a recombinant monoclonal antibody, which offers several advantages including: <ul style="list-style-type: none">- High batch-to-batch consistency and reproducibility- Improved sensitivity and specificity- Long-term security of supply- Animal-free production For more information see here . Our RabMAb [®] technology is a patented hybridoma-based technology for making rabbit monoclonal antibodies. For details on our patents, please refer to RabMAb[®] patents .

製品の特性

製品の状態	Liquid
保存方法	Shipped at 4°C. Store at +4°C short term (1-2 weeks). Upon delivery aliquot. Store at -20°C long term. Avoid freeze / thaw cycle.
バッファー	pH: 7.20 Preservative: 0.01% Sodium azide Constituents: 59% PBS, 40% Glycerol (glycerin, glycerine), 0.5% BSA
精製度	Protein A purified
ポリモノ	モノクローナル
クローン名	EPR13179

アプリケーション

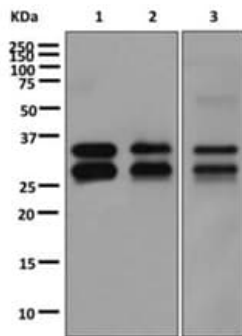
The Abpromise guarantee Abpromise保証は、次のテスト済みアプリケーションにおけるab177961の使用に適用されます
アプリケーションノートには、推奨の開始希釈率がありますが、適切な希釈率につきましてはご検討ください。

アプリケーション	Abreviews	特記事項
Flow Cyt (Intra)		1/10 - 1/100. ab172730 - Rabbit monoclonal IgG, is suitable for use as an isotype control with this antibody.
IP		1/10 - 1/100.
IHC-P		1/50 - 1/100. Perform heat mediated antigen retrieval via the pressure cooker method before commencing with IHC staining protocol.
WB		1/1000 - 1/10000. Predicted molecular weight: 27 kDa.
ICC/IF		1/50 - 1/100.

ターゲット情報

機能	Oxidoreductase required for tumor suppression. NADPH-bound form inhibits nuclear import by competing with nuclear import substrates for binding to a subset of nuclear transport receptors. May act as a redox sensor linked to transcription through regulation of nuclear import. Isoform 1 is a metastasis suppressor with proapoptotic as well as antiangiogenic properties. Isoform 2 has an antiapoptotic effect.
組織特異性	Ubiquitous. Highest level in liver. High levels in lung, skeletal muscle, pancreas and placenta. Moderate levels in heart and kidney. Low levels in brain. Not expressed or low levels in variant small cell lung carcinomas, 33% of hepatocellular carcinomas and neuroblastomas.
ドメイン	Unique C-terminus confers high proteasome-dependent instability to isoform 2.
細胞内局在	Cytoplasm. Nucleus envelope.

画像



Western blot - Anti-TIP30 antibody [EPR13179]
(ab177961)

All lanes : Anti-TIP30 antibody [EPR13179] (ab177961) at 1/1000 dilution

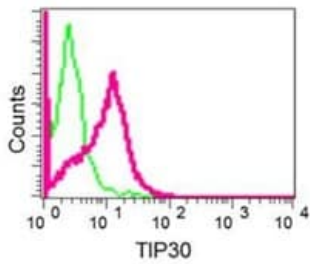
Lane 1 : HeLa cell lysate

Lane 2 : A431 cell lysate

Lane 3 : Fetal liver lysate

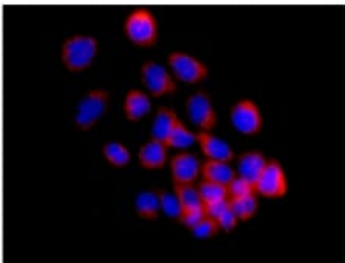
Lysates/proteins at 10 µg per lane.

Predicted band size: 27 kDa



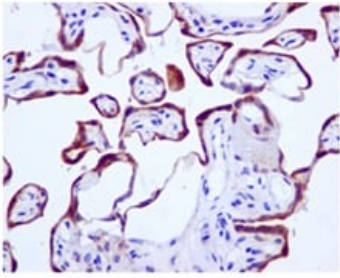
Flow Cytometry (Intracellular) - Anti-TIP30 antibody
[EPR13179] (ab177961)

Intracellular flow cytometric analysis of permeabilized HeLa cells labeling TIP30 using ab177961 at 1/10 dilution (red) or a rabbit IgG (negative) (green).



Immunocytochemistry/ Immunofluorescence - Anti-TIP30 antibody [EPR13179] (ab177961)

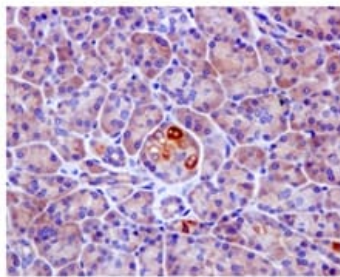
Immunofluorescence analysis of A431 cells labeling TIP30 using ab177961 at 1/50 dilution.



Immunohistochemistry (Formalin/PFA-fixed paraffin-embedded sections) - Anti-TIP30 antibody [EPR13179] (ab177961)

Immunohistochemical analysis of Human placenta tissue labeling TIP30 using ab177961 at 1/50 dilution.

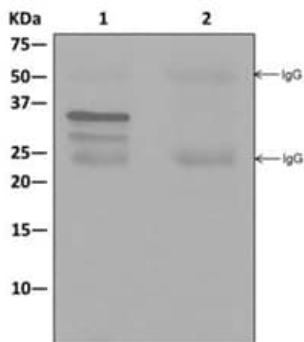
Perform heat mediated antigen retrieval via the pressure cooker method before commencing with IHC staining protocol.



Immunohistochemistry (Formalin/PFA-fixed paraffin-embedded sections) - Anti-TIP30 antibody [EPR13179] (ab177961)

Immunohistochemical analysis of Human pancreas tissue labeling TIP30 using ab177961 at 1/50 dilution.





Perform heat mediated antigen retrieval via the pressure cooker method before commencing with IHC staining protocol.



Immunoprecipitation - Anti-TIP30 antibody [EPR13179] (ab177961)

Western blot analysis on immunoprecipitation pellet from (1) HeLa cell lysate or (2) 1XPBS (negative control) using ab177961 at 1/10 dilution to immunoprecipitate TIP30, and HRP-conjugated anti-rabbit IgG preferentially detecting the non-reduced form of rabbit IgG.

Why choose a recombinant antibody?

 <p>Research with confidence Consistent and reproducible results</p>	 <p>Long-term and scalable supply Recombinant technology</p>
 <p>Success from the first experiment Confirmed specificity</p>	 <p>Ethical standards compliant Animal-free production</p>

Anti-TIP30 antibody [EPR13179] (ab177961)

Please note: All products are "FOR RESEARCH USE ONLY. NOT FOR USE IN DIAGNOSTIC PROCEDURES"

Our Abpromise to you: Quality guaranteed and expert technical support

- Replacement or refund for products not performing as stated on the datasheet
- Valid for 12 months from date of delivery
- Response to your inquiry within 24 hours
- We provide support in Chinese, English, French, German, Japanese and Spanish
- Extensive multi-media technical resources to help you
- We investigate all quality concerns to ensure our products perform to the highest standards

If the product does not perform as described on this datasheet, we will offer a refund or replacement. For full details of the Abpromise, please visit <https://www.abcam.co.jp/abpromise> or contact our technical team.

Terms and conditions

- Guarantee only valid for products bought direct from Abcam or one of our authorized distributors