




### Anti-TIMP2 antibody ab180630

★★★★★ [1 Abreviews](#) [52 References](#) [画像数 1](#)

#### 製品の概要

製品名	Anti-TIMP2 antibody
製品の詳細	Rabbit polyclonal to TIMP2
由来種	Rabbit
アプリケーション	<b>適用あり:</b> WB, ICC/IF, IHC-P
種交差性	<b>交差種:</b> Mouse, Rat, Human <b>交差が予測される動物種:</b> Rabbit, Guinea pig, Cow, Dog, Chinese hamster 
免疫原	Recombinant full length protein corresponding to Human TIMP2 aa 27-220. Mature protein. Sequence:  CSCSPVHPQQAFCNADVIRAKAVSEKEVDSGNDIYGNIPIKR IQYEIKQI KMFKGPEKDIEFIYTAPSSAVCGVSLDVGGKKEYLIAGKAEG DGKMHITL CDFIVPWDTLSTTQKKSLNHRYQMGCECKITRCPMIPCYISS PDECLWMD WVTEKNINGHQAKFFACIKRSDGSCAWYRG AAPPKQEFLDIEDP  Database link: <a href="#">P16035</a>
	 <a href="#">Run BLAST with</a>  <a href="#">Run BLAST with</a>

#### 特記事項

The Life Science industry has been in the grips of a reproducibility crisis for a number of years. Abcam is leading the way in addressing this with our range of recombinant monoclonal antibodies and knockout edited cell lines for gold-standard validation. Please check that this product meets your needs before purchasing.

If you have any questions, special requirements or concerns, please send us an inquiry and/or contact our Support team ahead of purchase. Recommended alternatives for this product can be found below, along with publications, customer reviews and Q&As

#### 製品の特性

製品の状態	Liquid
保存方法	Shipped at 4°C. Store at +4°C short term (1-2 weeks). Upon delivery aliquot. Store at -20°C long term. Avoid freeze / thaw cycle.
バッファー	pH: 7.30

	Preservative: 0.02% Sodium azide
	Constituents: 50% Glycerol, 49% PBS
精製度	Protein A purified
ポリ/モノ	ポリクローナル
アイソタイプ	IgG

## アプリケーション

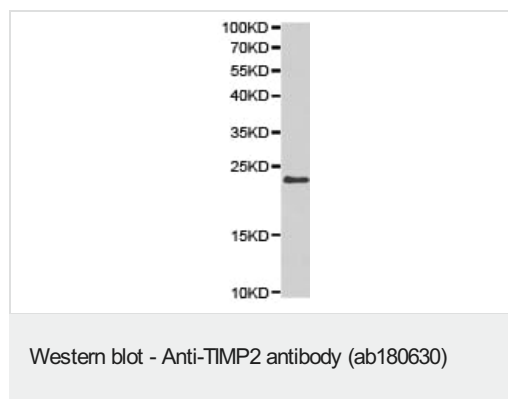
**The Abpromise guarantee**      Abpromise保証は、次のテスト済みアプリケーションにおけるab180630の使用に適用されます  
 アプリケーションノートには、推奨の開始希釈率がありますが、適切な希釈率につきましてはご検討ください。

アプリケーション	Abreviews	特記事項
WB		1/500 - 1/2000. Predicted molecular weight: 24 kDa.
ICC/IF		Use at an assay dependent concentration.
IHC-P		Use at an assay dependent concentration. <b>ab171870</b> - Rabbit polyclonal IgG, is suitable for use as an isotype control with this antibody.

## ターゲット情報

機能	Complexes with metalloproteinases (such as collagenases) and irreversibly inactivates them by binding to their catalytic zinc cofactor. Known to act on MMP-1, MMP-2, MMP-3, MMP-7, MMP-8, MMP-9, MMP-10, MMP-13, MMP-14, MMP-15, MMP-16 and MMP-19.
配列類似性	Belongs to the protease inhibitor I35 (TIMP) family. Contains 1 NTR domain.
翻訳後修飾	The activity of TIMP2 is dependent on the presence of disulfide bonds.
細胞内局在	Secreted.

## 画像



Anti-TIMP2 antibody (ab180630) at 1/500 dilution + SW480 cell line extract

**Predicted band size: 24 kDa**

**Please note:** All products are "FOR RESEARCH USE ONLY. NOT FOR USE IN DIAGNOSTIC PROCEDURES"

### **Our Abpromise to you: Quality guaranteed and expert technical support**

---

- Replacement or refund for products not performing as stated on the datasheet
- Valid for 12 months from date of delivery
- Response to your inquiry within 24 hours
  
- We provide support in Chinese, English, French, German, Japanese and Spanish
- Extensive multi-media technical resources to help you
- We investigate all quality concerns to ensure our products perform to the highest standards

If the product does not perform as described on this datasheet, we will offer a refund or replacement. For full details of the Abpromise, please visit <https://www.abcam.co.jp/abpromise> or contact our technical team.

### **Terms and conditions**

---

- Guarantee only valid for products bought direct from Abcam or one of our authorized distributors