

Anti-TIM 1 antibody ab47635

★★★★★ [1 Abreviews](#) [30 References](#) [画像数 1](#)

製品の概要

製品名	Anti-TIM 1 antibody
製品の詳細	Rabbit polyclonal to TIM 1
由来種	Rabbit
アプリケーション	適用あり: WB
種交差性	交差種: Human
免疫原	A 16 amino acid peptide from near the amino terminus of human TIM 1.
特記事項	<p>The Life Science industry has been in the grips of a reproducibility crisis for a number of years. Abcam is leading the way in addressing this with our range of recombinant monoclonal antibodies and knockout edited cell lines for gold-standard validation. Please check that this product meets your needs before purchasing.</p> <p>If you have any questions, special requirements or concerns, please send us an inquiry and/or contact our Support team ahead of purchase. Recommended alternatives for this product can be found below, along with publications, customer reviews and Q&As</p>

製品の特性

製品の状態	Liquid
保存方法	Shipped at 4°C. Store at +4°C short term (1-2 weeks). Store at +4°C.
バッファー	pH: 7.2 Preservative: 0.02% Sodium azide Constituent: PBS
精製度	Immunogen affinity purified
ポリ/モノ	ポリクローナル
アイソタイプ	IgG

アプリケーション

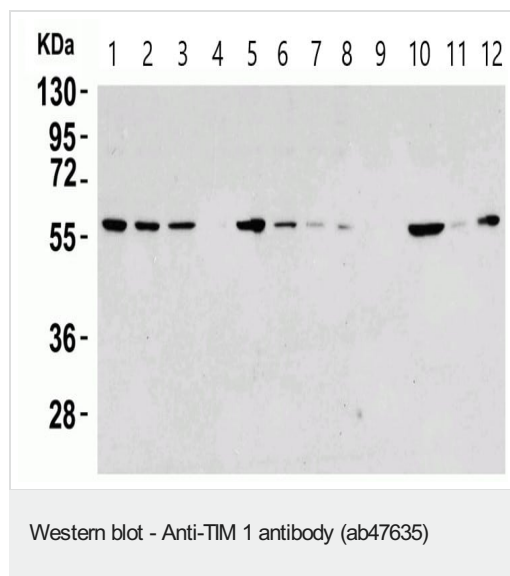
The Abpromise guarantee **Abpromise保証は、次のテスト済みアプリケーションにおけるab47635の使用に適用されます**
 アプリケーションノートには、推奨の開始希釈率がありますが、適切な希釈率につきましてはご検討ください。

アプリケーション	Abreviews	特記事項
WB	★★★★★ (1)	Use a concentration of 1 - 8 µg/ml. Predicted molecular weight: 39 kDa. Overnight incubation at 4°C is recommended.

ターゲット情報

機能	May play a role in T-helper cell development and the regulation of asthma and allergic diseases. Receptor for TIMD4 (By similarity). In case of human hepatitis A virus (HHAV) infection, functions as a cell-surface receptor for the virus. May play a role in kidney injury and repair.
組織特異性	Widely expressed, with highest levels in kidney and testis. Expressed by activated CD4+ T-cells during the development of helper T-cells responses.
配列類似性	Belongs to the immunoglobulin superfamily. TIM family. Contains 1 Ig-like V-type (immunoglobulin-like) domain.
細胞内局在	Membrane.

画像



All lanes : Anti-TIM 1 antibody (ab47635) at 8 µg/ml

Lane 1 : HEK-293 (human epithelial cell line from embryonic kidney) cell lysate

Lane 2 : A431 (human epidermoid carcinoma cell line) cell lysate

Lane 3 : A549 (human lung carcinoma cell line) cell lysate

Lane 4 : CaCo-2 (human colorectal adenocarcinoma cell line) cell lysate

Lane 5 : Daudi (human Burkitt's lymphoma cell line) cell lysate

Lane 6 : HeLa (human epithelial cell line from cervix adenocarcinoma) cell lysate

Lane 7 : HepG2 (human liver hepatocellular carcinoma cell line) cell lysate

Lane 8 : K562 (human chronic myelogenous leukemia cell line from bone marrow) cell lysate

Lane 9 : MCF7 (human breast adenocarcinoma cell line) cell lysate

Lane 10 : Jurkat (human T cell leukemia cell line from peripheral blood) cell lysate

Lane 11 : SK-N-SH (human neuroblastoma cell line) cell lysate

Lane 12 : THP-1 (human monocytic leukemia cell line) cell lysate

Lysates/proteins at 15 µg per lane.

Secondary

All lanes : Goat Anti-rabbit IgG (HRP) at 1/10000 dilution

Predicted band size: 39 kDa

Observed band size: 60 kDa

Diluting buffer and concentration: 5% NFDm/TBST.

Primary incubated overnight at 4°C.

Please note: All products are "FOR RESEARCH USE ONLY. NOT FOR USE IN DIAGNOSTIC PROCEDURES"

Our Abpromise to you: Quality guaranteed and expert technical support

- Replacement or refund for products not performing as stated on the datasheet
- Valid for 12 months from date of delivery
- Response to your inquiry within 24 hours
- We provide support in Chinese, English, French, German, Japanese and Spanish
- Extensive multi-media technical resources to help you
- We investigate all quality concerns to ensure our products perform to the highest standards

If the product does not perform as described on this datasheet, we will offer a refund or replacement. For full details of the Abpromise, please visit <https://www.abcam.co.jp/abpromise> or contact our technical team.

Terms and conditions

- Guarantee only valid for products bought direct from Abcam or one of our authorized distributors