

Anti-TIL/TLR1 antibody [EPR2075] ab68158

リコンビナント RabMAb[®]

1 References [画像数 4](#)

製品の概要

製品名	Anti-TIL/TLR1 antibody [EPR2075]
製品の詳細	Rabbit monoclonal [EPR2075] to TIL/TLR1
由来種	Rabbit
アプリケーション	適用あり: WB, IP, Flow Cyt 適用なし: ICC/IF or IHC-P
種交差性	交差種: Human
免疫原	Synthetic peptide within Human TIL/TLR1 aa 150-250 (extracellular). The exact sequence is proprietary.
ポジティブ・コントロール	WB: Daudi and Ramos cell lysates. Flow Cyt: Daudi cells. IP: Ramos cell lysate.
特記事項	<p>This product is a recombinant monoclonal antibody, which offers several advantages including:</p> <ul style="list-style-type: none">- High batch-to-batch consistency and reproducibility- Improved sensitivity and specificity- Long-term security of supply- Animal-free production <p>For more information see here.</p> <p>Our RabMAb[®] technology is a patented hybridoma-based technology for making rabbit monoclonal antibodies. For details on our patents, please refer to RabMAb[®] patents.</p> <p>Mouse, Rat: We have preliminary internal testing data to indicate this antibody may not react with these species. Please contact us for more information.</p>

製品の特性

製品の状態	Liquid
保存方法	Shipped at 4°C. Upon delivery aliquot and store at -20°C. Avoid freeze / thaw cycles.
バッファー	pH: 7.2 Preservative: 0.01% Sodium azide Constituents: 9% PBS, 40% Glycerol (glycerin, glycerine), 0.05% BSA, 50% Tissue culture supernatant
精製度	Protein A purified

ポリ/モノ	モノクローナル
クローン名	EPR2075
アイソタイプ	IgG

アプリケーション

The Abpromise guarantee **Abpromise保証は、次のテスト済みアプリケーションにおけるab68158の使用に適用されます**
 アプリケーションノートには、推奨の開始希釈率がありますが、適切な希釈率につきましてはご検討ください。

アプリケーション	Abreviews	特記事項
WB		
IP		
Flow Cyt		

追加情報

Flow Cyt: 1/60.
 IP: 1/40.
 WB: 1/1000 - 1/2000. Detects a band of approximately 90 and 125 kDa (predicted molecular weight: 90 kDa).

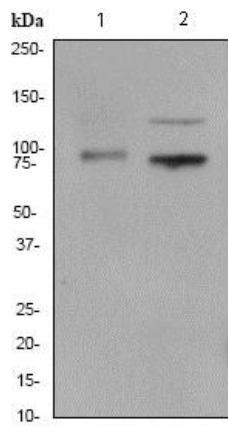
Is unsuitable for ICC or IHC-P.

Not yet tested in other applications.
 Optimal dilutions/concentrations should be determined by the end user.

ターゲット情報

機能	Participates in the innate immune response to microbial agents. Cooperates with TLR2 to mediate the innate immune response to bacterial lipoproteins or lipopeptides. Acts via MYD88 and TRAF6, leading to NF-kappa-B activation, cytokine secretion and the inflammatory response.
組織特異性	Ubiquitous. Highly expressed in spleen, ovary, peripheral blood leukocytes, thymus and small intestine.
配列類似性	Belongs to the Toll-like receptor family. Contains 12 LRR (leucine-rich) repeats. Contains 1 LRRCT domain. Contains 1 TIR domain.
細胞内局在	Cell membrane. Cytoplasmic vesicle > phagosome membrane.

画像



Western blot - Anti-TIL/TLR1 antibody [EPR2075] (ab68158)

All lanes : Anti-TIL/TLR1 antibody [EPR2075] (ab68158) at 1/1000 dilution

Lane 1 : Daudi cell lysate

Lane 2 : Ramos cell lysate

Lysates/proteins at 10 µg per lane.

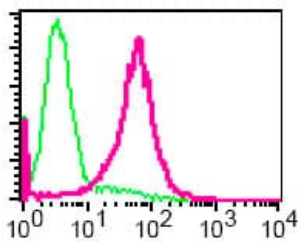
Secondary

All lanes : HRP labelled goat anti-rabbit at 1/2000 dilution

Predicted band size: 90 kDa

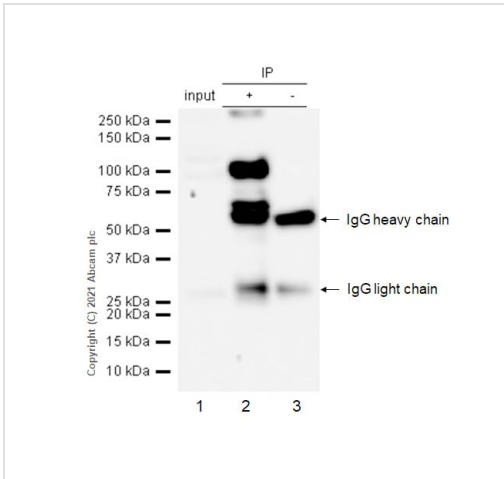
Observed band size: 90 kDa

Additional bands at: 125 kDa. We are unsure as to the identity of these extra bands.



Flow Cytometry - Anti-TIL/TLR1 antibody [EPR2075] (ab68158)

Flow cytometric analysis of TIL/TLR1 in Daudi cells using ab68158 at 1/60 dilution (pink) or a rabbit IgG (green).



Immunoprecipitation - Anti-TIL/TLR1 antibody
[EPR2075] (ab68158)

TIL/TLR1 was immunoprecipitated from 0.35 mg Ramos (Human Burkitt's lymphoma B lymphocyte) whole cell lysate 10 µg with ab68158 at 1/50 dilution (2µg). VeriBlot for IP Detection Reagent (HRP)([ab131366](#)) was used at 1/5000 dilution.

Lane 1: Ramos (Human Burkitt's lymphoma B lymphocyte) whole cell lysate 10 µg

Lane 2: ab68158 IP in Ramos whole cell lysate

Lane 3: Rabbit monoclonal IgG ([ab172730](#)) instead of ab68158 in Ramos whole cell lysate

Blocking and dilution buffer and concentration: 5% NFDm/TBST.

Why choose a recombinant antibody?

- Research with confidence**
Consistent and reproducible results
- Long-term and scalable supply**
Recombinant technology
- Success from the first experiment**
Confirmed specificity
- Ethical standards compliant**
Animal-free production

Anti-TIL/TLR1 antibody [EPR2075] (ab68158)

Please note: All products are "FOR RESEARCH USE ONLY. NOT FOR USE IN DIAGNOSTIC PROCEDURES"

Our Abpromise to you: Quality guaranteed and expert technical support

- Replacement or refund for products not performing as stated on the datasheet
- Valid for 12 months from date of delivery
- Response to your inquiry within 24 hours
- We provide support in Chinese, English, French, German, Japanese and Spanish
- Extensive multi-media technical resources to help you
- We investigate all quality concerns to ensure our products perform to the highest standards

If the product does not perform as described on this datasheet, we will offer a refund or replacement. For full details of the Abpromise, please visit <https://www.abcam.co.jp/abpromise> or contact our technical team.

Terms and conditions

- Guarantee only valid for products bought direct from Abcam or one of our authorized distributors