

# Anti-TICAM2 antibody ab17221

**2 References** [画像数 3](#)

### 製品の概要

---

製品名	Anti-TICAM2 antibody
製品の詳細	Rabbit polyclonal to TICAM2
由来種	Rabbit
アプリケーション	<b>適用あり:</b> ICC/IF, WB
種交差性	<b>交差種:</b> Human
免疫原	Synthetic peptide (Human) (C terminal).
ポジティブ・コントロール	PC3 whole cell lysate.
特記事項	<p>The Life Science industry has been in the grips of a reproducibility crisis for a number of years. Abcam is leading the way in addressing this with our range of recombinant monoclonal antibodies and knockout edited cell lines for gold-standard validation. Please check that this product meets your needs before purchasing.</p> <p>If you have any questions, special requirements or concerns, please send us an inquiry and/or contact our Support team ahead of purchase. Recommended alternatives for this product can be found below, along with publications, customer reviews and Q&amp;As</p>

### 製品の特性

---

製品の状態	Liquid
保存方法	Shipped at 4°C. Store at +4°C short term (1-2 weeks). Upon delivery aliquot. Store at -20°C or -80°C. Avoid freeze / thaw cycle.
バッファー	pH: 7.2 Preservative: 0.02% Sodium azide Constituent: PBS
精製度	Ion Exchange Chromatography
ポリ/モノ	ポリクローナル
アイソタイプ	IgG

### アプリケーション

---

The Abpromise guarantee

**Abpromise保証は、次のテスト済みアプリケーションにおけるab17221の使用に適用されます**

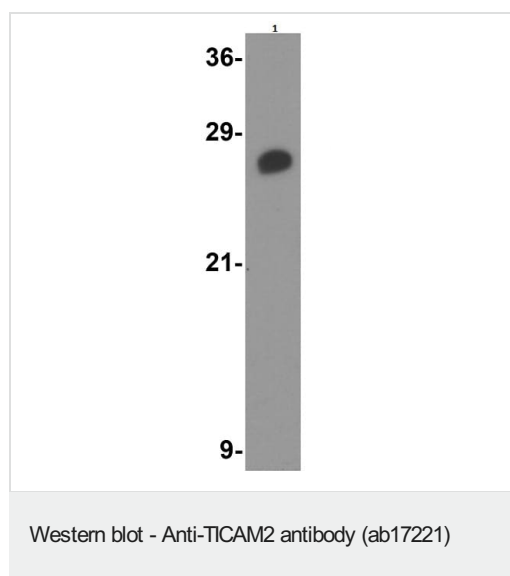
アプリケーションノートには、推奨の開始希釈率がありますが、適切な希釈率につきましてはご確認ください。

アプリケーション	Abreviews	特記事項
ICC/IF		Use a concentration of 10 µg/ml.
WB		Use a concentration of 0.5 - 2 µg/ml. Predicted molecular weight: 24 kDa.

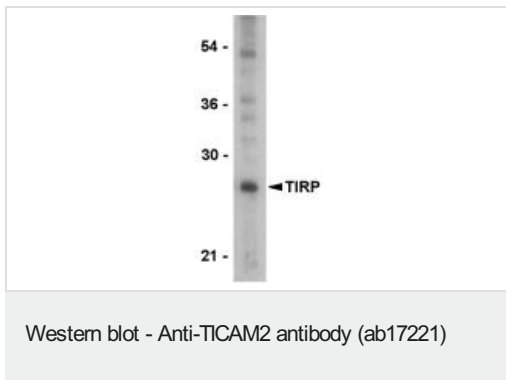
## ターゲット情報

機能	Functions in LPS-TLR4 signaling to regulate the MYD88-independent pathway during the innate immune response to LPS. Also involved in IL 1-triggered NF-kappa-B activation, functioning upstream of IRAK1, IRAK2, TRAF6, and IKBKB. Physically bridges TLR4 and TICAM1 and functionally transmits LPS-TLR4 signal to TICAM1.
組織特異性	Expressed in spleen, prostate, testis, uterus, small intestine, colon, peripheral blood leukocytes, heart, placenta, lung, liver, skeletal muscle, and pancreas.
配列類似性	Contains 1 TIR domain.
ドメイン	The TIR domain mediates the interaction with TRAF6.
翻訳後修飾	Phosphorylated by PKCE in response to LPS. Phosphorylation is essential for its function. It is depleted from the membrane upon phosphorylation. Myristoylated. Required for membrane association which is critical for its ability to initiate efficient signaling.
細胞内局在	Cytoplasm. Golgi apparatus. Cell membrane. Localized to the plasma membrane as a result of myristoylation. Phosphorylation on Ser-16 leads to its depletion from the membrane.

## 画像



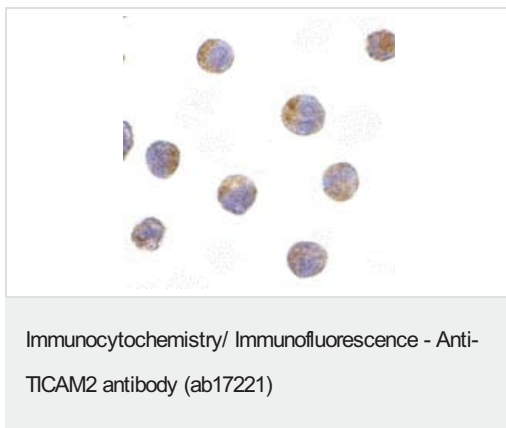
Western Blot of PC-3 cell lysate labeling TICAM2 with Anti-TICAM2 antibody (ab17221) at 1µg/ml.



Anti-TICAM2 antibody (ab17221) at 1 µg/ml + PC-3 cell lysate

**Predicted band size:** 24 kDa

Western blot using ab17221 at 1 µg/ml on PC-3 cell lysate.



ab17221 at 10µg/ml staining TICAM2 in Raji cells by ICC/IF

**Please note:** All products are "FOR RESEARCH USE ONLY. NOT FOR USE IN DIAGNOSTIC PROCEDURES"

### Our Abpromise to you: Quality guaranteed and expert technical support

---

- Replacement or refund for products not performing as stated on the datasheet
- Valid for 12 months from date of delivery
- Response to your inquiry within 24 hours
- We provide support in Chinese, English, French, German, Japanese and Spanish
- Extensive multi-media technical resources to help you
- We investigate all quality concerns to ensure our products perform to the highest standards

If the product does not perform as described on this datasheet, we will offer a refund or replacement. For full details of the Abpromise, please visit <https://www.abcam.co.jp/abpromise> or contact our technical team.

### Terms and conditions

---

- Guarantee only valid for products bought direct from Abcam or one of our authorized distributors