

Anti-TIA1 antibody [TIA-1] ab2712

★★★★☆ **6 Abreviews** **17 References** 画像数 1

製品の概要

| | |
|--------------|---|
| 製品名 | Anti-TIA1 antibody [TIA-1] |
| 製品の詳細 | Mouse monoclonal [TIA-1] to TIA1 |
| 由来種 | Mouse |
| アプリケーション | 適用あり: IHC-P |
| 種交差性 | 交差種: Mouse, Human, Monkey |
| 免疫原 | Recombinant full length protein. This information is proprietary to Abcam and/or its suppliers. |
| ポジティブ・コントロール | IHC-P: Human spleen tissue. |
| 特記事項 | <p>TIA-1 (T-cell intracytoplasmic antigen) monoclonal antibody reacts with a 15 kDa cytoplasmic granule-associated protein, expressed in lymphocytes processing cytolytic potential. The expression of TIA-1 was studied in CD30+ anaplastic large cell lymphomas (ALCL), NK cell lymphomas and peripheral T-cell lymphomas and T cell lymphocytosis, B-cell lymphomas and lymphoblastic leukemia, Hodgkin's etc. Studies showed that 60 to 70% of anaplastic large cell lymphoma reacted with TIA-1. Studies also indicate that TIA-1 reacts with most large granular lymphocytic leukemia's, hepatosplenic T-cell lymphomas, intestinal T-cell lymphomas, NK-like T-cell lymphomas, NK-cell lymphomas, nasal T/NK-cell lymphomas, subcutaneous T-cell lymphomas, pulmonary angiocentric lymphomas of T or NK phenotype. The author's concluded from TIA-1 studies that anaplastic large-cell lymphomas are cytotoxic T-or NK-cell neoplasms. All B-cell lymphomas, Hodgkin's and lymphoblastic leukemias were negative for TIA-1.</p> <p>The Life Science industry has been in the grips of a reproducibility crisis for a number of years. Abcam is leading the way in addressing this with our range of recombinant monoclonal antibodies and knockout edited cell lines for gold-standard validation. Please check that this product meets your needs before purchasing.</p> <p>If you have any questions, special requirements or concerns, please send us an inquiry and/or contact our Support team ahead of purchase. Recommended alternatives for this product can be found below, along with publications, customer reviews and Q&As</p> |

製品の特性

| | |
|-------|--|
| 製品の状態 | Liquid |
| 保存方法 | Shipped at 4°C. Store at +4°C short term (1-2 weeks). Upon delivery aliquot. Store at -20°C or -80°C. Avoid freeze / thaw cycle. |
| バッファー | Preservative: 0.1% Sodium azide |

| | |
|---------|--|
| | Constituent: Proprietary Solution |
| 精製度 | Proprietary Purification |
| 一次抗体 備考 | TIA-1 (T-cell intracytoplasmic antigen) monoclonal antibody reacts with a 15 kDa cytoplasmic granule-associated protein, expressed in lymphocytes processing cytolytic potential. The expression of TIA-1 was studied in CD30+ anaplastic large cell lymphomas (ALCL), NK cell lymphomas and peripheral T-cell lymphomas and T cell lymphocytosis, B-cell lymphomas and lymphoblastic leukemia, Hodgkin's etc. Studies showed that 60 to 70% of anaplastic large cell lymphoma reacted with TIA-1. Studies also indicate that TIA-1 reacts with most large granular lymphocytic leukemia's, hepatosplenic T-cell lymphomas, intestinal T-cell lymphomas, NK-like T-cell lymphomas, NK-cell lymphomas, nasal T/NK-cell lymphomas, subcutaneous T-cell lymphomas, pulmonary angiocentric lymphomas of T or NK phenotype. The author's concluded from TIA-1 studies that anaplastic large-cell lymphomas are cytotoxic T-or NK-cell neoplasms. All B-cell lymphomas, Hodgkin's and lymphoblastic leukemias were negative for TIA-1. |
| ポリ/モノ | モノクローナル |
| クローン名 | TIA-1 |
| ミエローマ | unknown |
| アイソタイプ | IgG1 |
| 軽鎖の種類 | unknown |

アプリケーション

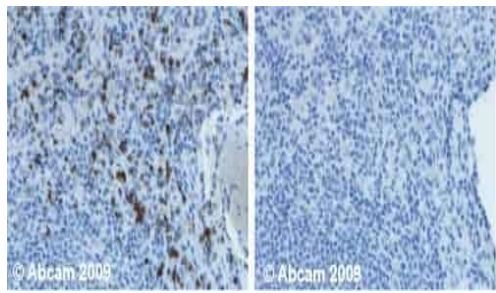
The Abpromise guarantee **Abpromise保証は、** 次のテスト済みアプリケーションにおけるab2712の使用に適用されます
 アプリケーションノートには、推奨の開始希釈率がありますが、適切な希釈率につきましてはご検討ください。

| アプリケーション | Abreviews | 特記事項 |
|----------|-----------|---|
| IHC-P | ★★★★★ (1) | 1/50 - 1/100. Incubate for 30-60 minutes at RT. Use heat-mediated antigen retrieval, an optional pepsin treatment can also improve the signal. |

ターゲット情報

| | |
|-------|--|
| 機能 | Involved in alternative pre-RNA splicing and regulation of mRNA translation by binding to AU-rich elements (AREs) located in mRNA 3' untranslated regions (3' UTRs). Possesses nucleolytic activity against cytotoxic lymphocyte target cells. May be involved in apoptosis. |
| 配列類似性 | Contains 3 RRM (RNA recognition motif) domains. |
| 細胞内局在 | Cytoplasmic granule. Nucleus. Accumulates in cytoplasmic stress granules (SG) following cellular damage. |

画像



Immunohistochemistry (Formalin/PFA-fixed paraffin-embedded sections) - Anti-TIA1 antibody [TIA-1] (ab2712)

Human normal spleen. Staining is observed in the cytoplasm. Left panel: with primary antibody at 1 ug/ml. Right panel: isotype control. Sections were stained using an automated system at room temperature: sections were rehydrated and antigen retrieved with buffers citrate EDTA pH 9.0. Slides were peroxidase blocked in 3% H₂O₂ in methanol for 10 minutes. They were then blocked for 10 minutes (casein 0.25% in PBS) then incubated with primary antibody for 20 minutes. Colorimetric detection was completed with Diaminobenzidine for 5 minutes. Slides were counterstained with Haematoxylin and coverslipped. Please note that for manual staining we recommend to optimize the primary antibody concentration and incubation time (overnight incubation), and amplification may be required.

Please note: All products are "FOR RESEARCH USE ONLY. NOT FOR USE IN DIAGNOSTIC PROCEDURES"

Our Abpromise to you: Quality guaranteed and expert technical support

- Replacement or refund for products not performing as stated on the datasheet
- Valid for 12 months from date of delivery
- Response to your inquiry within 24 hours
- We provide support in Chinese, English, French, German, Japanese and Spanish
- Extensive multi-media technical resources to help you
- We investigate all quality concerns to ensure our products perform to the highest standards

If the product does not perform as described on this datasheet, we will offer a refund or replacement. For full details of the Abpromise, please visit <https://www.abcam.co.jp/abpromise> or contact our technical team.

Terms and conditions

- Guarantee only valid for products bought direct from Abcam or one of our authorized distributors