

Anti-Thymidylate Synthase antibody ab7398

7 References [画像数 1](#)

製品の概要

製品名	Anti-Thymidylate Synthase antibody
製品の詳細	Sheep polyclonal to Thymidylate Synthase
由来種	Sheep
アプリケーション	適用あり: WB
種交差性	交差種: Human 非交差種: Saccharomyces cerevisiae
免疫原	Recombinant full length protein corresponding to Human Thymidylate Synthase. Produced in E.coli. Database link: P04818
特記事項	<p>The antibody recognizes the expected additional band corresponding to the ternary complex of human TS-dFUMP-reduced folate in HeLa cells treated with the TS inhibitor 5-FUdR. This event occurs in most human breast, colorectal, gastric, head and neck carcinomas. The antibody recognizes 36 kDa human TS.</p> <p>The Life Science industry has been in the grips of a reproducibility crisis for a number of years. Abcam is leading the way in addressing this with our range of recombinant monoclonal antibodies and knockout edited cell lines for gold-standard validation. Please check that this product meets your needs before purchasing.</p> <p>If you have any questions, special requirements or concerns, please send us an inquiry and/or contact our Support team ahead of purchase. Recommended alternatives for this product can be found below, along with publications, customer reviews and Q&As</p>

製品の特性

製品の状態	Liquid
保存方法	Shipped at 4°C. Store at +4°C short term (1-2 weeks). Upon delivery aliquot. Store at -20°C or -80°C. Avoid freeze / thaw cycle.
バッファー	Preservative: 0.01% Sodium azide Constituents: 0.42% Potassium phosphate, 0.87% Sodium chloride
精製度	IgG fraction
ポリ/モノ	ポリクローナル
アイソタイプ	IgG

アプリケーション

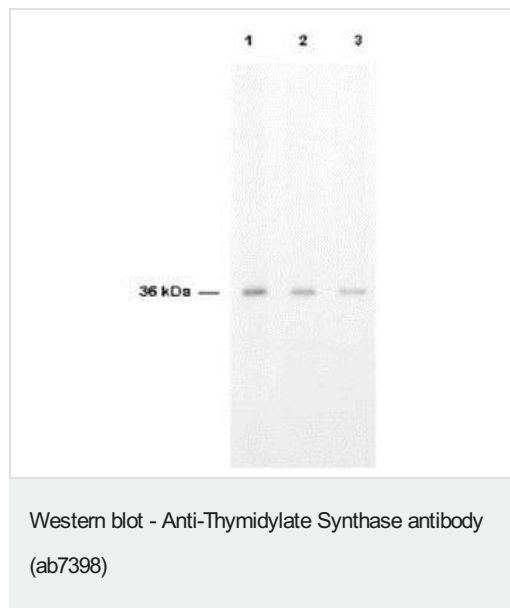
The Abpromise guarantee **Abpromise保証は、** 次のテスト済みアプリケーションにおけるab7398の使用に適用されます
アプリケーションノートには、推奨の開始希釈率がありますが、適切な希釈率につきましてはご検討ください。

アプリケーション	Abreviews	特記事項
WB		Use at an assay dependent concentration. Predicted molecular weight: 37 kDa.

ターゲット情報

機能	Contributes to the de novo mitochondrial thymidylate biosynthesis pathway.
パスウェイ	Pyrimidine metabolism; dTTP biosynthesis.
配列類似性	Belongs to the thymidylate synthase family.
細胞内局在	Nucleus. Cytoplasm. Mitochondrion. Mitochondrion matrix. Mitochondrion inner membrane.

画像



ab7398 is shown to detect thymidylate synthase present in a HeLa cell extract. Each lane is estimated to contain 4 µg of protein. Lanes 1, 2 and 3 represent 1/2000, 1/5000 and 1/10000 fold dilutions of the antibody. Detection was made using HRP Rabbit-a-Sheep IgG diluted 1/1000 and color development using TMB substrate for approximately 4'.

Please note: All products are "FOR RESEARCH USE ONLY. NOT FOR USE IN DIAGNOSTIC PROCEDURES"

Our Abpromise to you: Quality guaranteed and expert technical support

- Replacement or refund for products not performing as stated on the datasheet
- Valid for 12 months from date of delivery
- Response to your inquiry within 24 hours
- We provide support in Chinese, English, French, German, Japanese and Spanish

- Extensive multi-media technical resources to help you
- We investigate all quality concerns to ensure our products perform to the highest standards

If the product does not perform as described on this datasheet, we will offer a refund or replacement. For full details of the Abpromise, please visit <https://www.abcam.co.jp/abpromise> or contact our technical team.

Terms and conditions

- Guarantee only valid for products bought direct from Abcam or one of our authorized distributors