


# Anti-Thymidylate Synthase antibody ab168853

画像数 2

### 製品の概要

製品名	Anti-Thymidylate Synthase antibody
製品の詳細	Rabbit polyclonal to Thymidylate Synthase
由来種	Rabbit
アプリケーション	適用あり: WB, IP
種交差性	交差種: Mouse, Human 交差が予測される動物種: Rat, Rabbit, Cow, Dog, Pig, Chimpanzee, Lizard, Rhesus monkey, Gorilla, Chinese hamster, Orangutan, Elephant 
免疫原	Synthetic peptide, corresponding to a region within amino acids 263-313 of Human Thymidylate Synthase (NP_001062.1). <a href="#">Run BLAST with ExPASy</a> <a href="#">Run BLAST with NCBI</a>
ポジティブ・コントロール	WB: Jurkat, 293T, HeLa, mouse TCMK-1 and mouse NIH3T3 whole cell lysates. IP: Jurkat whole cell lysate.
特記事項	<p>The Life Science industry has been in the grips of a reproducibility crisis for a number of years. Abcam is leading the way in addressing this with our range of recombinant monoclonal antibodies and knockout edited cell lines for gold-standard validation. Please check that this product meets your needs before purchasing.</p> <p>If you have any questions, special requirements or concerns, please send us an inquiry and/or contact our Support team ahead of purchase. Recommended alternatives for this product can be found below, along with publications, customer reviews and Q&amp;As</p>

### 製品の特性

製品の状態	Liquid
保存方法	Shipped at 4°C. Store at +4°C short term (1-2 weeks). Upon delivery aliquot. Store at -20°C long term.
バッファー	pH: 7 Preservative: 0.09% Sodium azide Constituent: 99% Tris citrate/phosphate
精製度	pH 7 to 8 Immunogen affinity purified

**特記事項 (精製)**

ab168853 was affinity purified using an epitope specific to Thymidylate Synthase immobilized on solid support.

**ポリモノ**

ポリクローナル

**アイソタイプ**

IgG

**アプリケーション****The Abpromise guarantee**

**Abpromise保証は、次のテスト済みアプリケーションにおけるab168853の使用に適用されます**

アプリケーションノートには、推奨の開始希釈率がありますが、適切な希釈率につきましてはご検討ください。

アプリケーション	Abreviews	特記事項
WB		1/2000 - 1/10000. Predicted molecular weight: 36 kDa.
IP		Use at 2-10 µg/mg of lysate.

**ターゲット情報****機能**

Contributes to the de novo mitochondrial thymidylate biosynthesis pathway.

**パスウェイ**

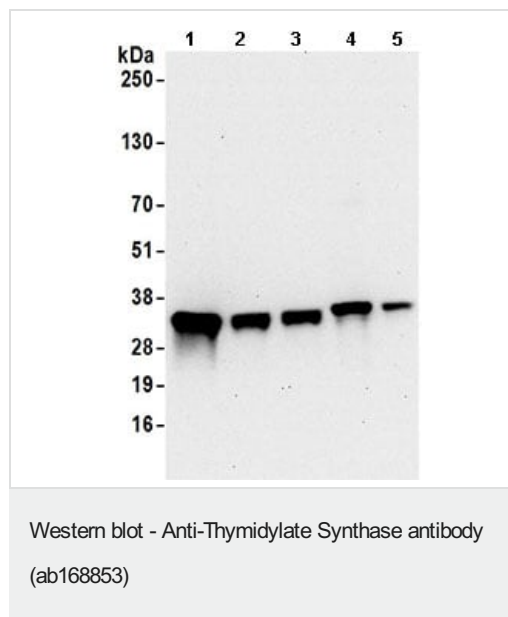
Pyrimidine metabolism; dTTP biosynthesis.

**配列類似性**

Belongs to the thymidylate synthase family.

**細胞内局在**

Nucleus. Cytoplasm. Mitochondrion. Mitochondrion matrix. Mitochondrion inner membrane.

**画像**

**All lanes :** Anti-Thymidylate Synthase antibody (ab168853) at 0.1 µg/ml

**Lane 1 :** Jurkat whole cell lysate

**Lane 2 :** 293T whole cell lysate

**Lane 3 :** HeLa whole cell lysate

**Lane 4 :** TCMK-1 whole cell lysate

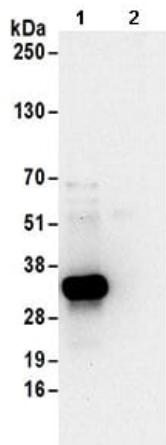
**Lane 5 :** NIH3T3 whole cell lysate

Lysates/proteins at 50 µg per lane.

Developed using the ECL technique.

**Predicted band size:** 36 kDa

**Exposure time:** 30 seconds



Immunoprecipitation - Anti-Thymidylate Synthase antibody (ab168853)

Detection of Thymidylate Synthase in Immunoprecipitates of Jurkat whole cell lysate (1 mg for IP, 20% of IP loaded) using ab168853 at 6  $\mu$ g/mg lysate for IP (Lane 1) and at 1  $\mu$ g/ml for subsequent Western blot detection. Lane 2 represents control IgG IP. Detection: Chemiluminescence with an exposure time of 10 seconds.

**Please note:** All products are "FOR RESEARCH USE ONLY. NOT FOR USE IN DIAGNOSTIC PROCEDURES"

### Our Abpromise to you: Quality guaranteed and expert technical support

- Replacement or refund for products not performing as stated on the datasheet
- Valid for 12 months from date of delivery
- Response to your inquiry within 24 hours
- We provide support in Chinese, English, French, German, Japanese and Spanish
- Extensive multi-media technical resources to help you
- We investigate all quality concerns to ensure our products perform to the highest standards

If the product does not perform as described on this datasheet, we will offer a refund or replacement. For full details of the Abpromise, please visit <https://www.abcam.co.jp/abpromise> or contact our technical team.

### Terms and conditions

- Guarantee only valid for products bought direct from Abcam or one of our authorized distributors